



Louis Thompson Road Tightline

WELCOME TO OUR VIRTUAL OPEN HOUSE!

August 7, 2024 | 6-7 p.m.



How to Participate

- Share your questions and comments using the Q&A box
- Let us know if you have any access needs
- If technical issues arise
- Tell us more about you to help improve our outreach
- Mentimeter – *Share your input in real-time!*



Make Your Voice Heard!



How did you hear about this virtual public meeting?

*Scan the QR code or go to **menti.com** and enter the code **4174 0972***

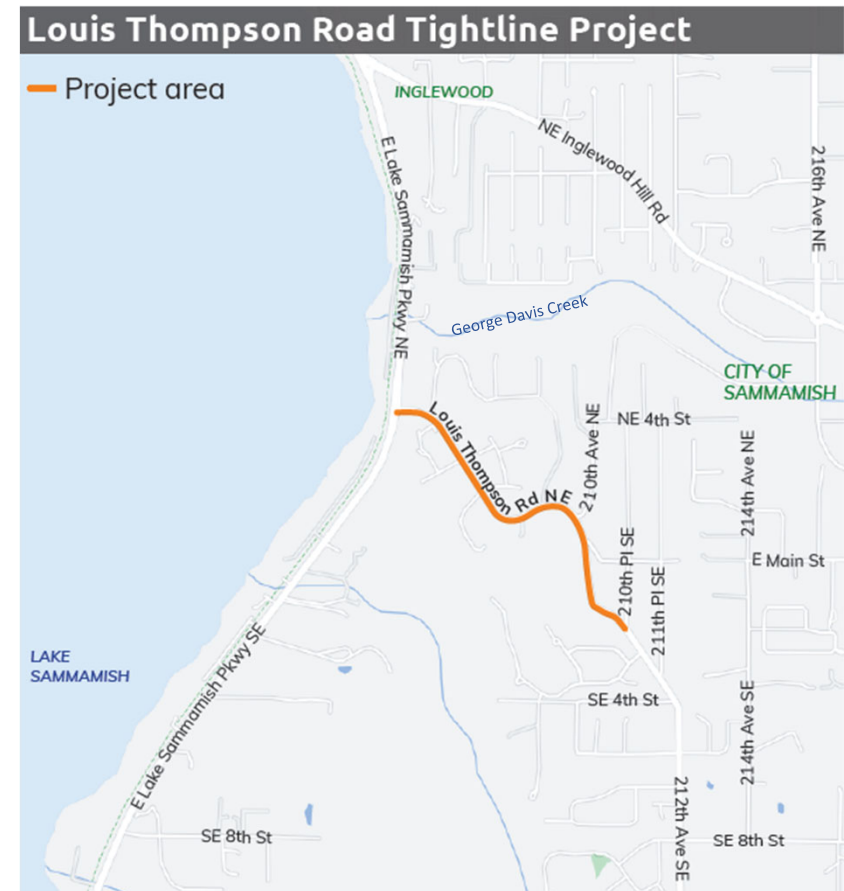
Tonight's Agenda

- Welcome
- Project overview
- Project timeline
- Construction details
- Agency & local services coordination
- Stay connected
- Q&A



Project Background

- Louis Thompson Road is a crucial connection route for Sammamish
- Uncontrolled stormwater runoff impacts
 - Flooding
 - Erosion
 - Landslides
- Opportunities to improve safety for people walking and biking



Project Goals



Improve existing stormwater system

- Upgrade system to increase capacity and accommodate runoff
- Replace ditches with pipes to reduce flooding erosion
- Improve water quality



Non-motorized improvements

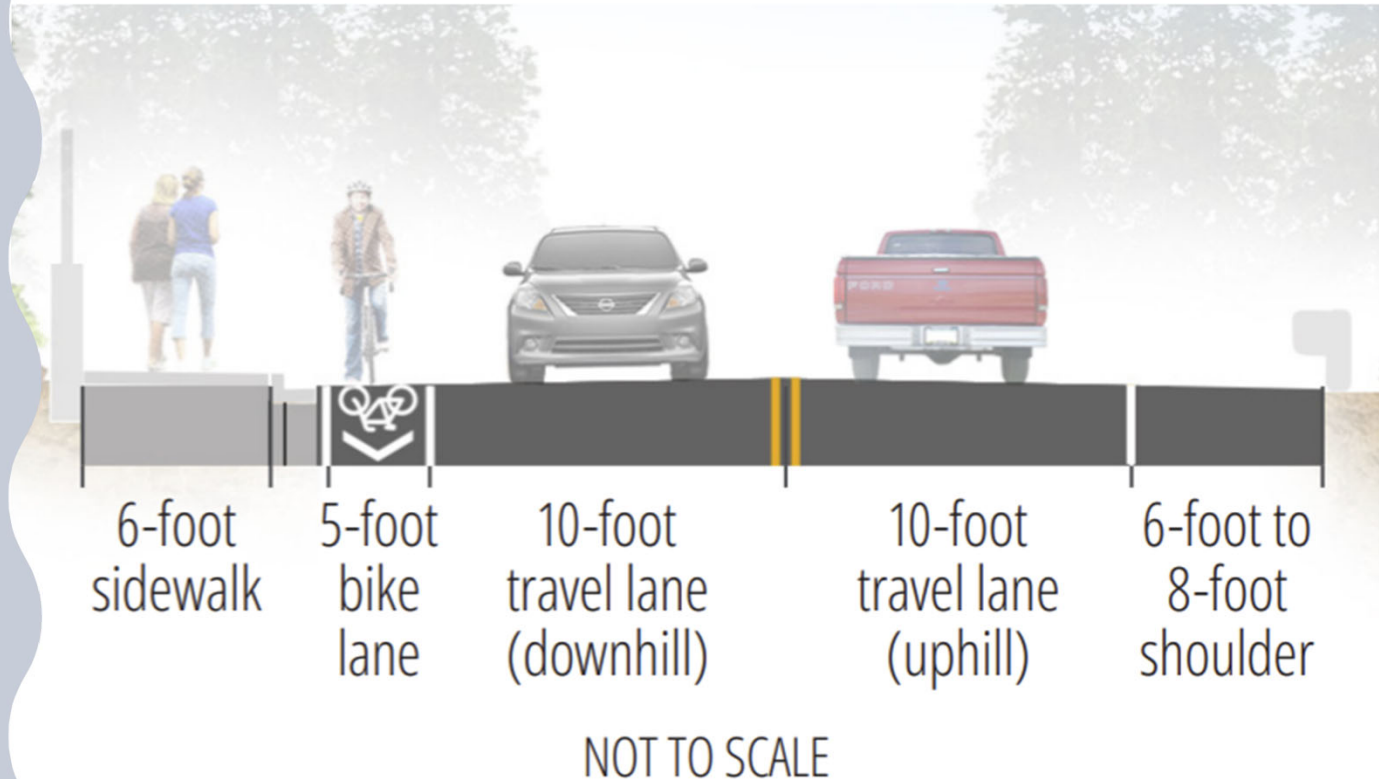
- Connect communities to Lake Sammamish
- Sidewalks, bike lane, and shoulder widening



Selected Design Alternative

Following community input, Alternative 4 was selected to move forward into final design

- Upgrading stormwater systems
- Adding sidewalk and bike lane on the north (downhill) side of the road
- Minor widening on the south (uphill) side of the road to ensure a 6-foot shoulder
- New water main on the south (uphill) side of the road



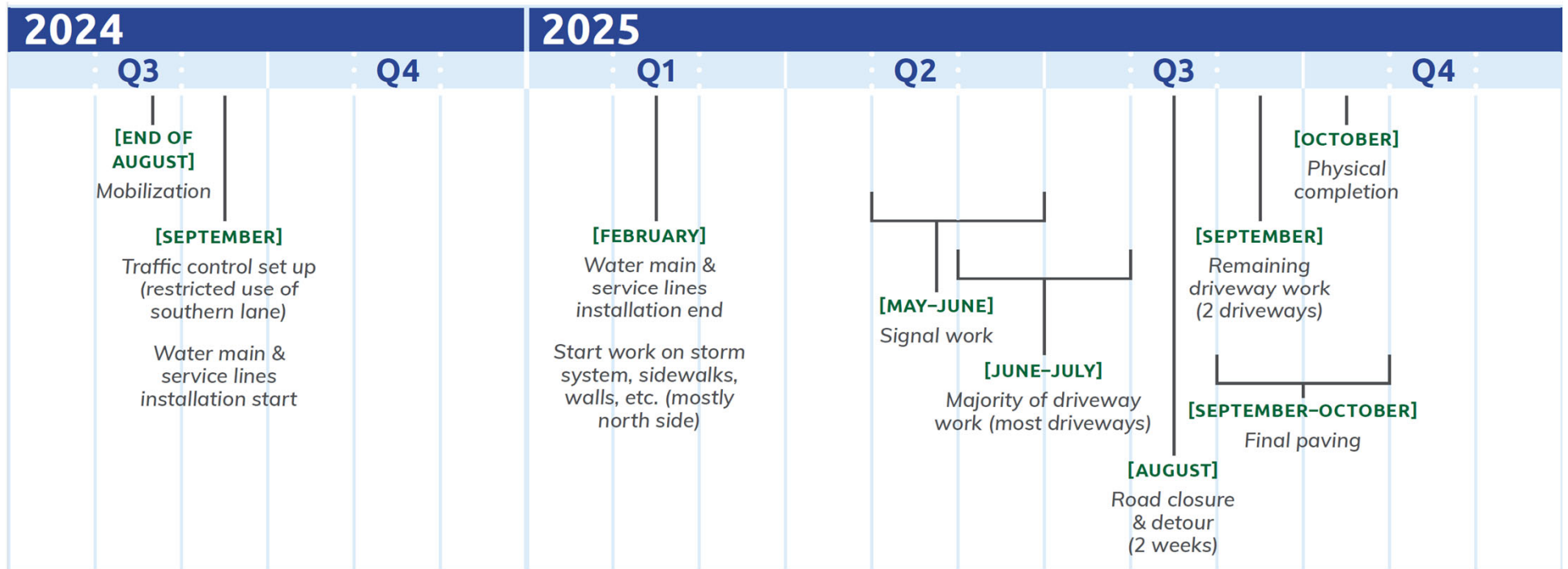
Make Your Voice Heard!



Which improvement to Louis Thompson Road are you most excited about?

*Scan the QR code or go to [menti.com](https://www.menti.com) and enter the code **4174 0972***

Preliminary Construction Timeline



Anticipated Construction Details

- During project construction, surrounding communities can expect:
 - Approximately 16 months of active construction
 - Expected work hours: 7 am -5 pm
 - Construction on both sides of the roadway at different times
 - Potential utility interruptions
 - Utility providers to notify residences as needed
 - Traffic control measures (flaggers, signals, lane restrictions, etc.)
 - Expected closure in August 2025



Agency & Local Services Coordination

- The project team plans to continue coordination and maintain access for:
 - Local garbage & recycling service
 - Lake Washington School District
 - USPS & other traditional package deliveries
 - Emergency services



Stay Involved, Stay Connected

- Visit sammamish.us/projects/louis-thompson-tightline
 - Learn more about the project, design, and next steps
 - Sign up for project updates
- Have questions? Want more information?
 - **Jed Ireland, Senior Project Engineer**
PHONE: (425) 295-0563
EMAIL: jireland@sammamish.us

Help us Conduct Inclusive Engagement



**Please consider completing our
Title VI Survey**

*Scan the QR code or go to **bit.ly/title-vi-form***

We need your help in gathering demographic information. Help us understand who we are reaching by completing our anonymous Title VI Survey.

We Want to Hear from You - Share Your Questions!

Share your questions using the Q&A box

What is the history of this project?

How was the preferred alternative chosen?

Will there be nighttime or weekend work?





Thanks for joining us!

sammamish.us/projects/louis-thompson-tightline



Thank you to our funding partners

