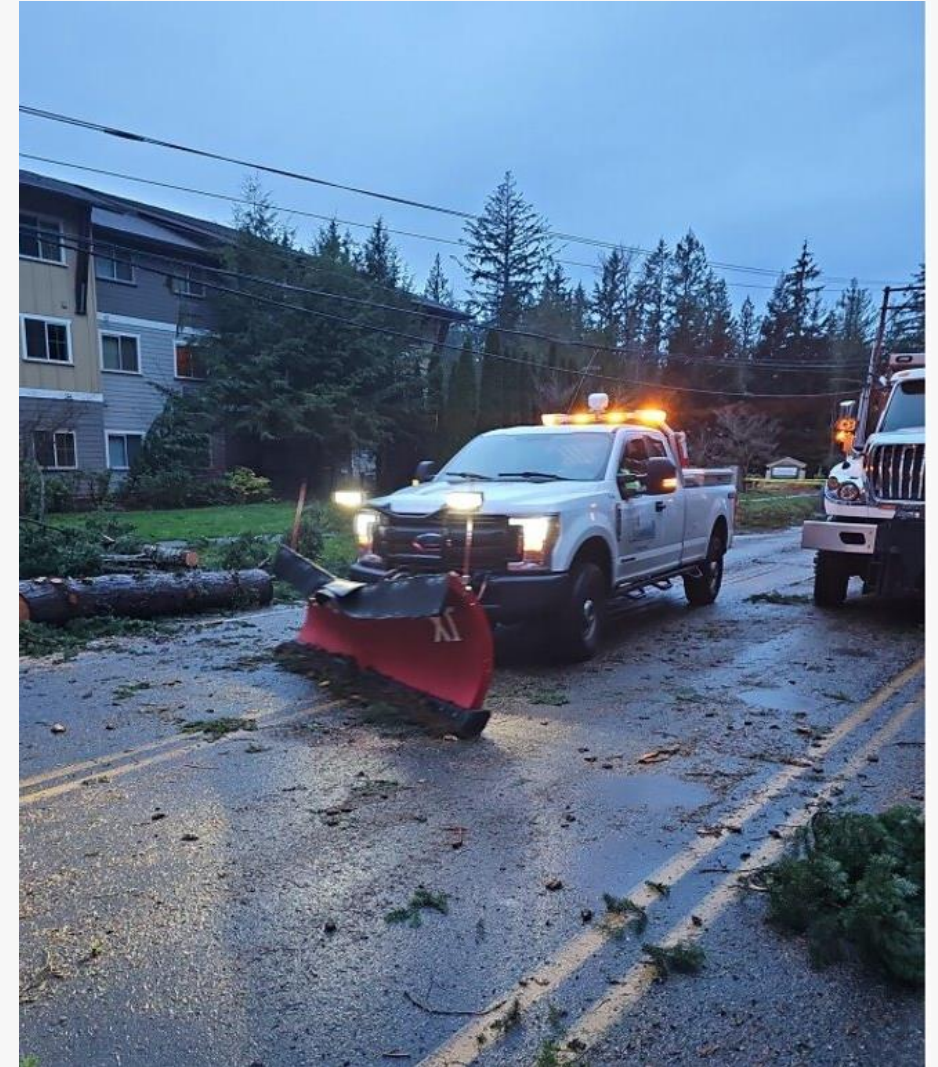


Storm Update

City Council Special Meeting | December 10, 2024

Preparing for the Storm

- Crews prepared for the storm by readying:
 - Heavy equipment
 - Portable generators
 - Chainsaws and related equipment
 - Message boards, barricades, and sandbags
 - Fuel for all equipment
- Crews moved to emergency standby



The Storm | Nov. 19

- **2:00 p.m.** - First downed tree reported
- **6:30 p.m.** - Widespread power outages started
- **7:45 p.m.** - Reports of downed trees pervasive
- **9:00-midnight** - City crews pulled due to safety (*except medical assistance calls, required detour*)
- Forecasted winds 30 mph sustained and 55 mph gusts
- Many roads blocked by downed trees and power lines
- Entire city lost power and internet
- Cell networks disrupted
- Eastside Fire & Rescue reported over 750 emergency calls across their service area between 5–9 p.m.



The Storm | Nov. 19

City coordinated response with Eastside Fire & Rescue (EF&R) and Sammamish Police

- City crews assisted EF&R by clearing trees to allow access to medical calls
- Deputies Greiert and Martin are chainsaw certified and helped open roads to get to calls



The Storm | Nov. 19

3:00 a.m. – Crews provided initial damage assessment

Blocked roads throughout the city:

- Issaquah-Pine Lake Road
- W Beaver Lake Drive SE
- SE 20th
- 212th
- East Lake Sammamish Parkway
- SE Windsor
- SE 32nd
- 228th @ Providence Point
- Preserve Neighborhood



Response | Day 2-8

- Assessment of roads, parks, and other City assets (e.g., stormwater ponds, creeks, guardrails, etc.)
- Clearing downed trees and debris, starting with priority routes
- Collaboration with EF&R and Sammamish PD to ensure life safety access
- Leadership team coordination meetings 3X daily
- Attempted coordination with PSE with little success
- Coordination with neighboring cities & King County





Ebright Creek Park



Sammamish Landing



Beaver Lake Pavillion



Response | Day 2-8

Public Roadway Response & Cleanup Resources

Supporting cleanup of 415+ lane miles of public roads

ROW Clearing

- 17 Maintenance Staff – Public Works & Parks (10-hour shifts)
- Superintendents (2)
- Leads (2)
- Support staff:
 - Mechanic
 - PW Admin. Division
 - City Manager's Office
 - IT Department

Equipment

- 13 Trucks
- 2 Excavators
- 2 Backhoes (1rented)
- 1 Chipper trailer
- 1 Snow plow

Contracts

- Traffic Control
- ROW Landscape Maintenance
- Street Sweeping
- Tree Removal
- Debris Management
- Fuel
- Equipment rentals

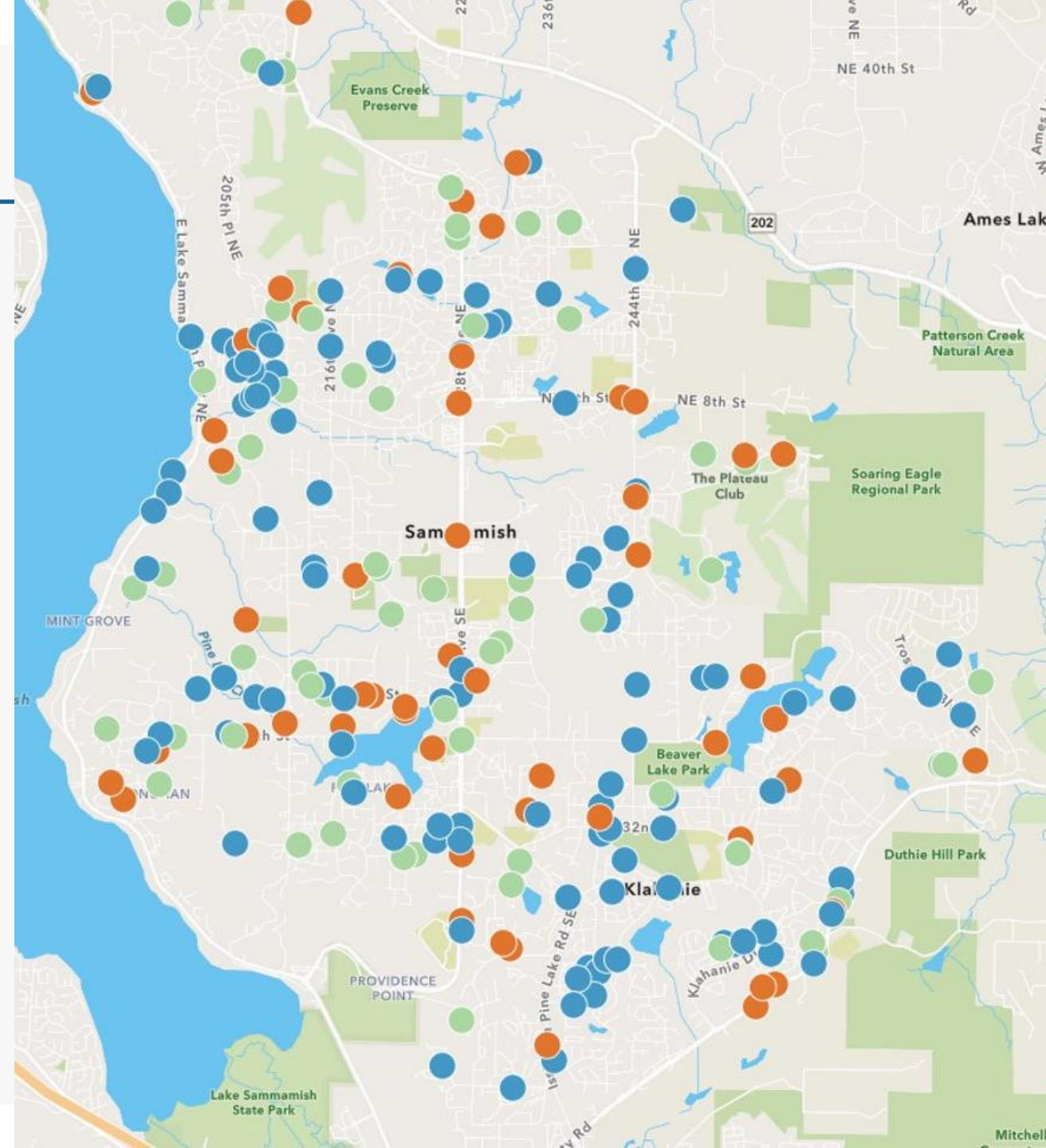
Preliminary Damage Assessments

- Street trees (being assessed)
- Right-of-way/pond fence sections (being assessed)
- 1 traffic signal
- 35 street signs
- 260+ feet of guardrail (estimate \$100,000 - \$150,000)
- 1 generator replacement
- Equipment damage/replacement



Service Requests

- 343 MySammamish requests were created from 11/19 – 12/5
- 208 downed trees and power lines
- Spill response from transformers



Warming Center

City Hall opened Nov. 20-27 from 8am-8pm

- Estimated 400+ people per day initially
- Every available chair, table, and floor space
- City provided water, coffee, hot cocoa (*very popular*), and coordinated food trucks
- Games, puzzles, and robotics
- Attendees charged phones, battery packs, medical equipment, and more
- Some parked and used wifi from outside the building when closed
- Staff volunteered evenings and the weekend



Emergency Proclamation

City Manager issued emergency proclamation Nov. 22

- Allows City to use emergency powers to aid in the response to the storm:
 - Additional supplies, equipment and services to support road clearing
 - Allows City to quickly contract with service providers
- City is asking the state and federal government to declare an emergency to allow reimbursement



CITY OF SAMMAMISH PROCLAMATION OF CIVIL EMERGENCY

WHEREAS, on November 19, 2024, the City of Sammamish and surrounding areas experienced a severe winter storm with heavy winds and rain, described by meteorologists as a “bomb cyclone”; and

WHEREAS, the weather event has caused widespread and extended power outages, communications disruptions including internet and cellular outages, public and private sector damage, and other infrastructure failures; and


WHEREAS, these conditions present a threat to public health, welfare, and safety and to the proper performance of essential governmental and private functions; and

WHEREAS, the City of Sammamish believes that the current conditions and the potential for additional weather events constitute a civil emergency as defined by Sammamish Municipal Code [2.70.020\(2\)](#) and necessitate the utilization of emergency powers granted under RCW 38.52.070; and

WHEREAS, in the judgment of the undersigned, extraordinary measures are required to protect the public health, safety and welfare of Sammamish residents and may go beyond the capability of local resources.

NOW, THEREFORE, the undersigned City Manager of the City of Sammamish, Washington does declare a civil emergency exists within the City of Sammamish.

Dated this 22nd day of November 2024.



Scott MacColl
City Manager of the City of Sammamish

Current Status

- Crews are still on emergency status, 5 days/10-hour shifts
- All roads passable
- Continue to clear priority routes
 - Focusing on curb-to-curb clearing, not just passable
 - Estimating 2-3 weeks for clearing
- Some parks open
 - Parking lots may be closed for debris management
- Still inspecting City assets – stormwater ponds, creeks, etc.

Open Parks 12/10

- Eastlake & Inglewood fields
- Klahanie Park
- NE Sammamish Park
- Illahee
- Upper Commons Plaza
- Lower Commons
- Sammamish Landing
- Beaver Lake (*lakeside/lodge only*)



Storm Permits

Storm response customer service desk open at City Hall from Nov. 27 – Dec.13

- Expedited permitting for damaged buildings and trees
- Encouraging customers to report their damages to King County to aid in potential federal disaster designation
- What we've seen so far:
 - 47 walk in customers at City Hall related to storm
 - 74 tree damage submittals through online portal
 - 39 permit applications received for storm damage building repairs (including electrical service)
 - 17 storm damage assessments by building inspectors

STORM DAMAGE TREE REMOVAL

Share this page:
[Facebook](#) [LinkedIn](#) [Twitter](#) [Email](#)

A tree may be removed that has become an imminent threat due to recent storm damage or has already fallen, during the bomb cyclone storm event. If feasible, it is highly recommended that an arborist provides a letter explaining the threat posed by the tree(s).

The City has issued an emergency proclamation in response to the bomb cyclone storm event, providing flexibility to address threats and clean up. Photo documentation is required.

For any tree that has fallen or is leaning onto your yard, you are allowed to trim or remove what is within the limits of your property. The clearing of such tree debris does not require permits.

STORM DAMAGE TREE REMOVAL
For the immediate removal of trees that are compromised and considered an imminent threat, or those that have already fallen and need to be cleared from the property, please provide the following information:

Name: * Email: *

Address: * Parcel Number: *

Number of trees to be removed: *

Size of trees (estimate): *

Storm Costs

Preliminary estimates as of Nov. 26

| Category | Estimate | Examples |
|--------------|--------------------|---|
| Contracts | \$1,470,000 | Debris clearing Guardrail repair |
| Labor | \$700,500 | Regular hours + overtime spent on storm |
| Equipment | \$90,000 | Heavy equipment rental for debris removal |
| Supplies | \$72,325 | Generator fuel restock Warming center supplies |
| Total | \$2,332,825 | |



Debris

Our crews have removed ~900 cubic yards of tree/limb debris to date

- Council Chambers is ~850 cubic yards. We could more than fill the Council Chambers (wall to wall - floor to ceiling) with tree/limb debris we removed this week alone
- Estimate 3,000 cubic yards needed for ROW debris
- We have not yet started significant debris removal in parks because of focus on rights of way



Nov 24, 2024 8:44:28 AM
21205 Southeast 28th Street

State & County Coordination

Attempting to receive designated emergency status to allow for reimbursement of storm costs

- Preliminary indications are that the County and State have met threshold to begin process with FEMA
- Small group of staff working on paperwork to backup initial cost estimates
- December 12 is next major deadline



Storm Communications

The City increased communication between Nov. 20 - 27

- **Posts across all channels: 227**
Increase of 393% vs pre-storm
- **Total impressions: 264,641**
Increase of 320% vs pre-storm
- **Post Reach:**
 - Facebook: 111,705
 - Instagram: 57,591

City of Sammamish - Government
November 20 at 3:00 PM

Afternoon update--will try to keep this thread going if anything major happens tonight. Here's what you need to know!

Crews are still working around the clock to remove debris from the roads. We are doing priority routes first--large streets that first responders absolutely need. It will be some time (no, we don't know when) before we will make it to the smaller streets. We also do not have enough signs for all of the streets that are impacted by fallen trees and power lines so be extra careful.

City Hall will function as a warming center tomorrow, Thursday Nov. 21 from 8:30 a.m. – 5 p.m. Typical city business lines like permits, code compliance, etc will not be functioning Thursday, Nov. 21. Parks are still closed to the public.

A few other reminders:

- ✗ We do not remove trees from private property--that is the owner's responsibility.
- 🛒 Some local grocery stores are open, not certain what the stock looks like.
- ⚡ Puget Sound Energy is working on repairing lines--no, we don't know when everything will be up and running again.
- ⚡ Please stay away from power lines and other electrical equipment.
- 🚦 Traffic lights that are not functional should be treated as 4-way stops.
- 🗓️ P.S. if you missed it, last night's council meeting had to be canceled because of power issues. It has been rescheduled for Monday, Nov. 25 and will start earlier, at 5:30 p.m.



City of Sammamish - Government
City Hall

[Send message](#)

👍👏 153

47 comments 31 shares

Looking Forward

- Debris management expected to continue into the new year
- Repairs at parks will also continue into the new year
 - Crews report approximately 300 trees down in parks that need to be removed
 - 300' of damaged fencing in parks
- Continuing to seek FEMA reimbursement
- Developing after action report and setting up subcommittees to address improvements



Lessons Learned

- Room for improvement on coordination with PSE
 - Unclear where they were working
 - Did not ask for City's priorities
- Personal preparedness is key
 - Two weeks ready – communications push
- Current EOC location not compatible with warming center
- Opportunity to improve internal/external communications
- Community expectation management about what City can and cannot do



Thank you!

Special thank you to the:

- **Maintenance crews** who worked the height of the storm and continue working today
- **Staff** who volunteered at the warming center, serving the public with compassion
- **Permit & Inspection staff** for quickly standing up the storm damage response for residents
- **Sammamish Police and EF&R** who kept the community safe throughout the storm
- **Community** for their resiliency

