



Pine Lake Creek Basin Plan

Informational Presentation

City Council Regular Meeting
July 2, 2024



The Team

Patty Dillon
Northwest Hydraulic Consultants



Erin Nelson
AltaTerra Consulting



Nancy Thai
Conсор Engineering



Heather Baxter & Bill Mavros
PBS Engineering & Environmental



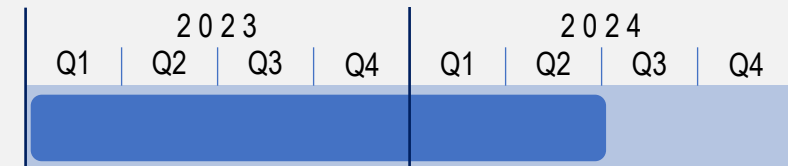
Bryan Berkompas
Aspect



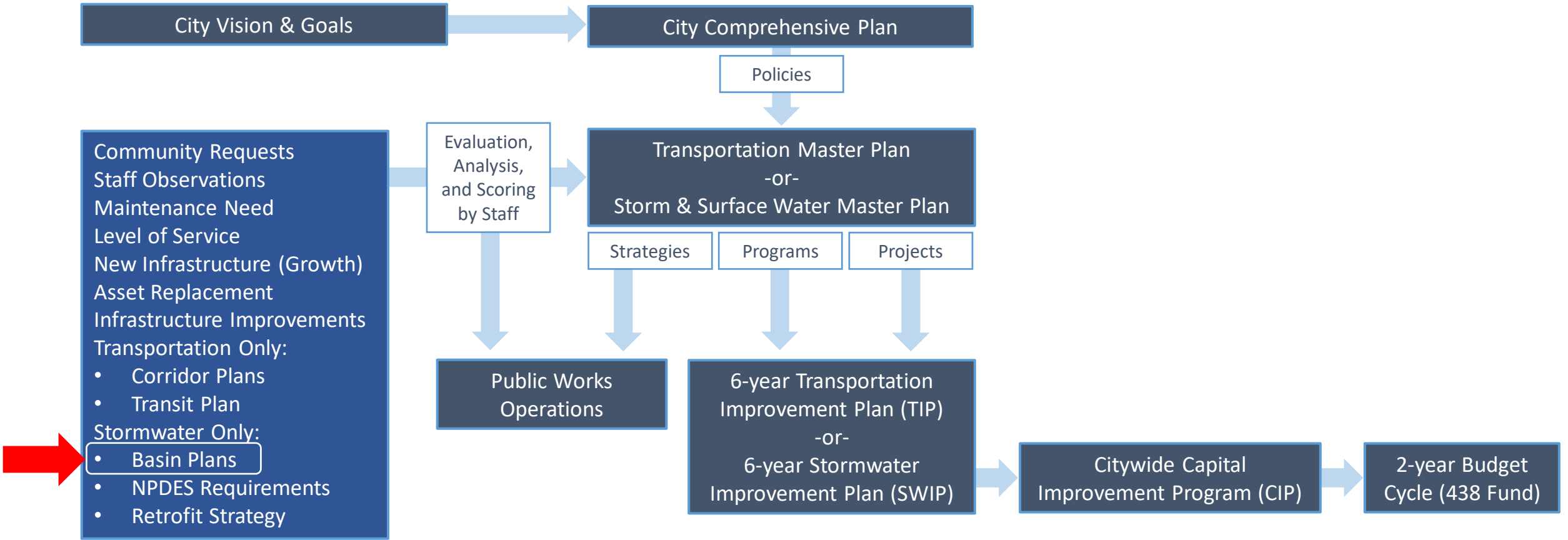
Toby Coenen
Project Manager

Agenda

- Basin Planning Primer
- Introduction to the Pine Lake Creek Basin Plan
- Process



Overview Basin Planning



Importance of a Basin Plan

Roadmap

Provides a prioritized list of actions to improve drainage basin health

- *Capital Projects*
- *Operational Practices*
- *Policy Considerations*

Alignment

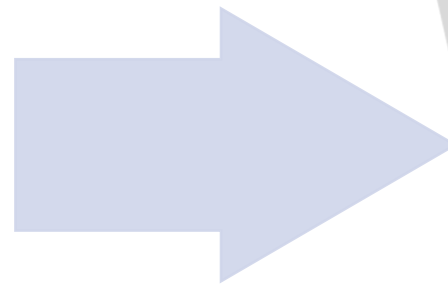
Assure consistency with stormwater planning efforts

- *NPDES Permit*
- *Retrofit Program*
- *Code*

Service

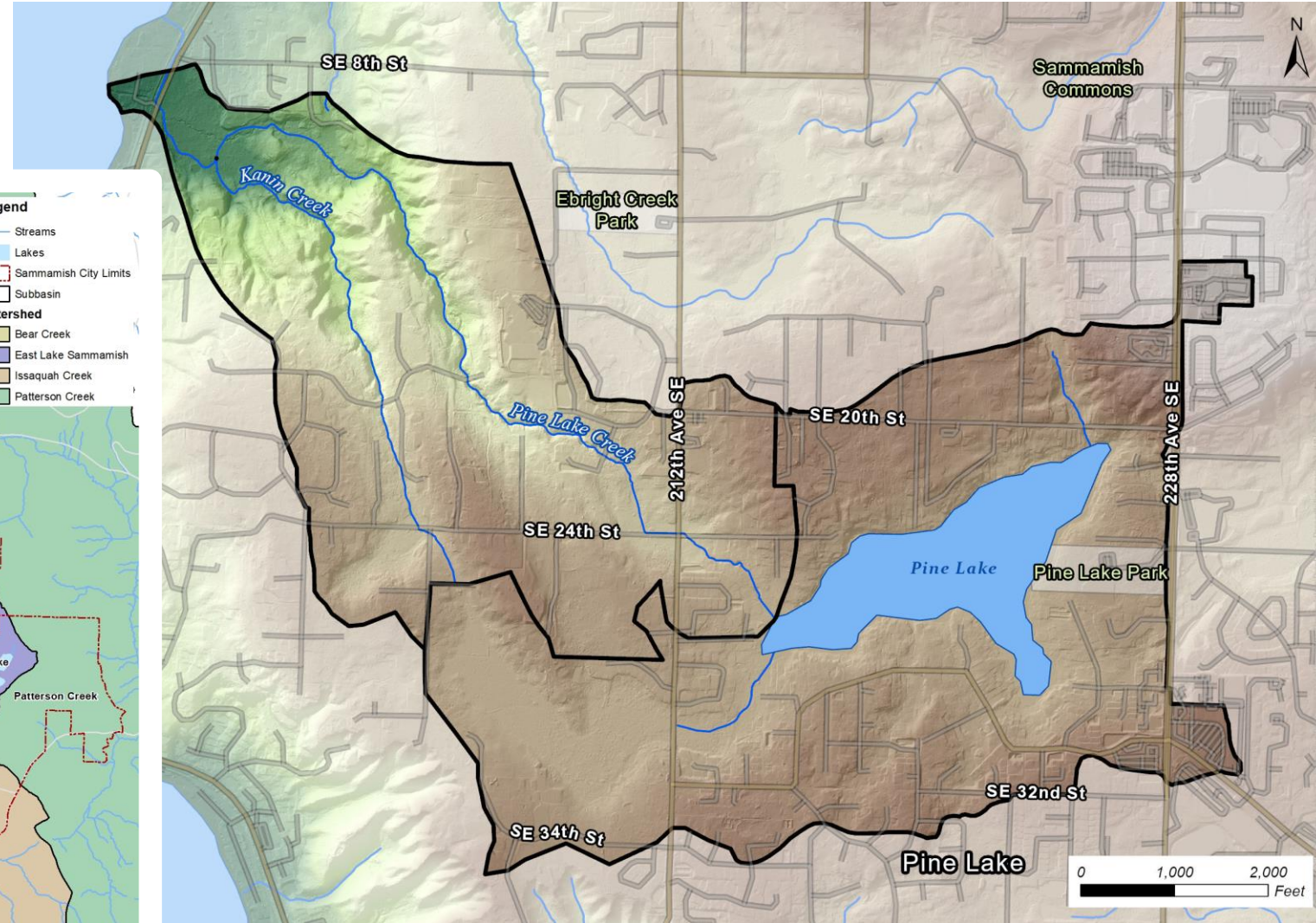
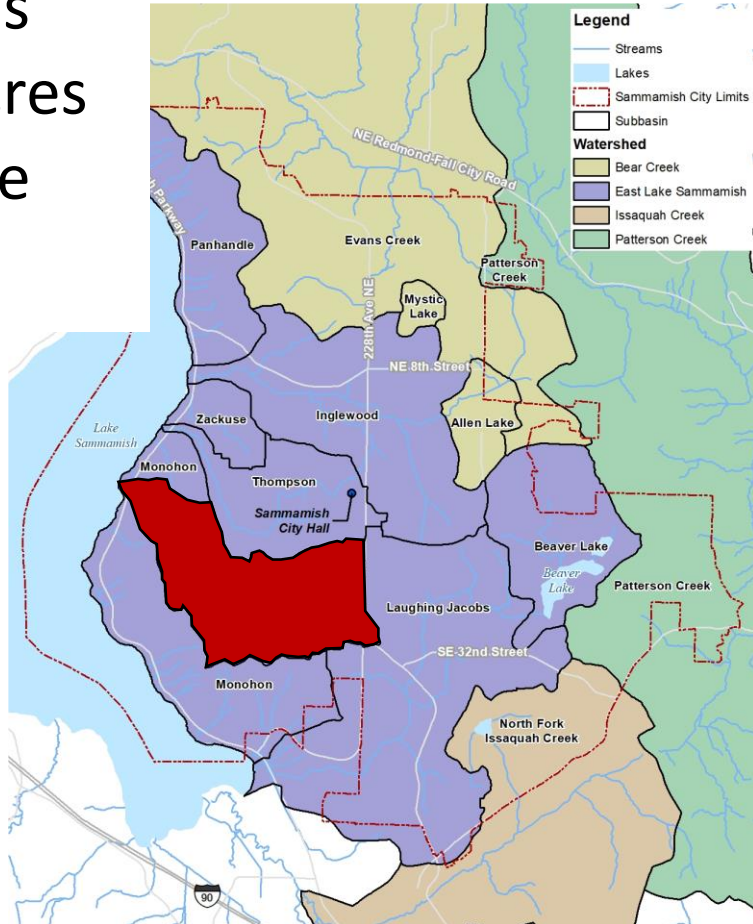
A critical part of the Enhanced Level of Service established by the stormwater utility's rate study

What is a Basin Plan?



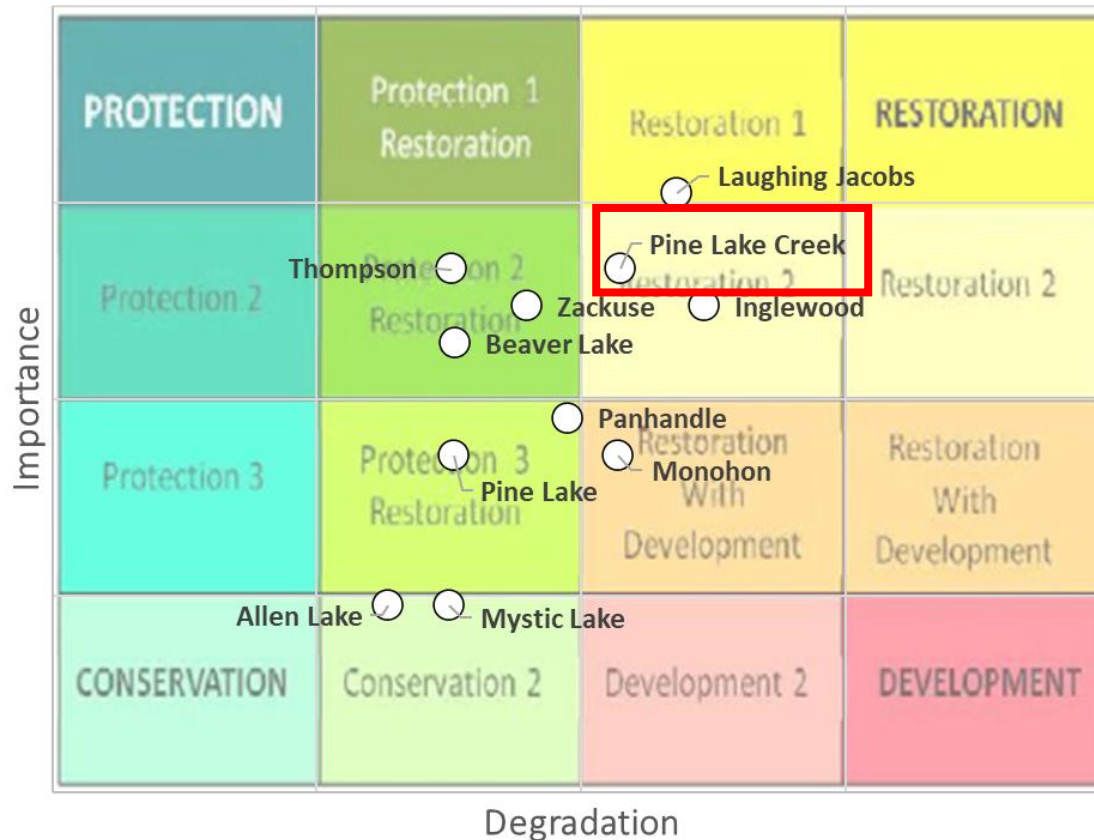
Plan Area

- 14 Basins
- 1,200 acres
- Pine Lake
- Streams



Why This Area?

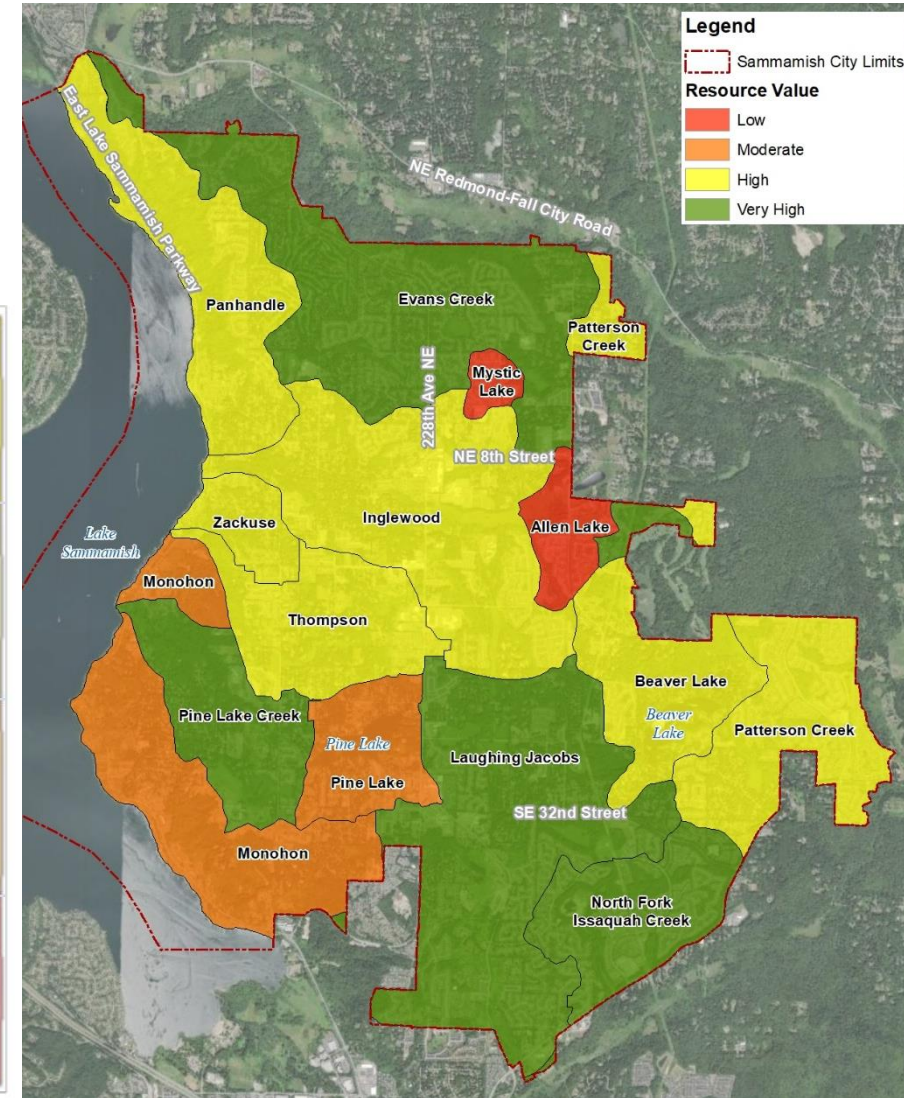
Management Matrix for Restoration and Protection



Source: City of Sammamish

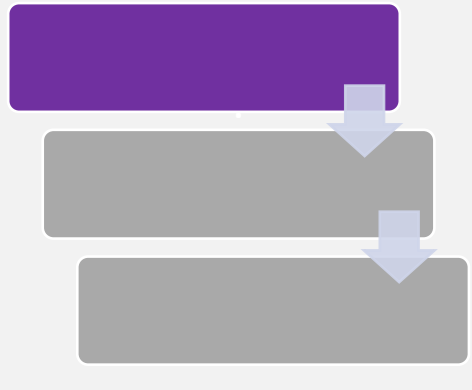
Stormwater Retrofit Strategy and Guidance Manual

July 2021



Step 1

Evaluate



Resource Review

- Compile ex. mapping (geology, critical areas, land use, topography)
- Existing Reports & Plans

Data Collection

- Stream gage data
- Water quality sampling
- Stakeholder & staff input
- Site investigations

Outcome

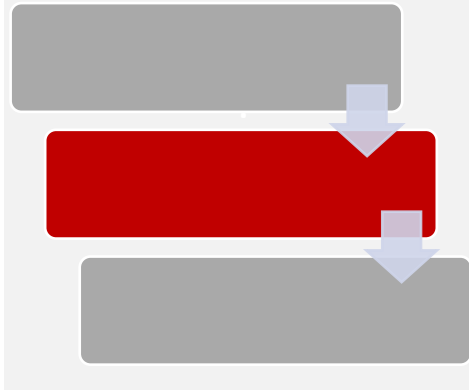
- Understand nature and character of basin
- Identify unique attributes and resources
- What are the challenges and opportunities

Good Condition

Significant Riparian Area

Step 2

Analyze



Priorities/Goals

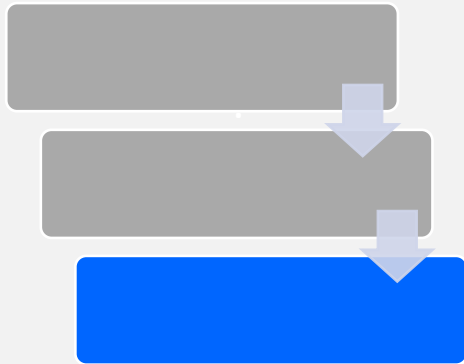
- Regulatory
- Public Safety
- Environment
- Property
- Recreation

Analysis

- Modeling
- Feedback

Step 3

Solutions



Strategies/Programs

- Sustainable riparian landscaping recognition program
- Targeted education and outreach to lakefront property owners
- Additional support for & coordination with property acquisition program
- Bog Education program
- Native growth protection area incentive program
- Support for formation of a Lake Management District

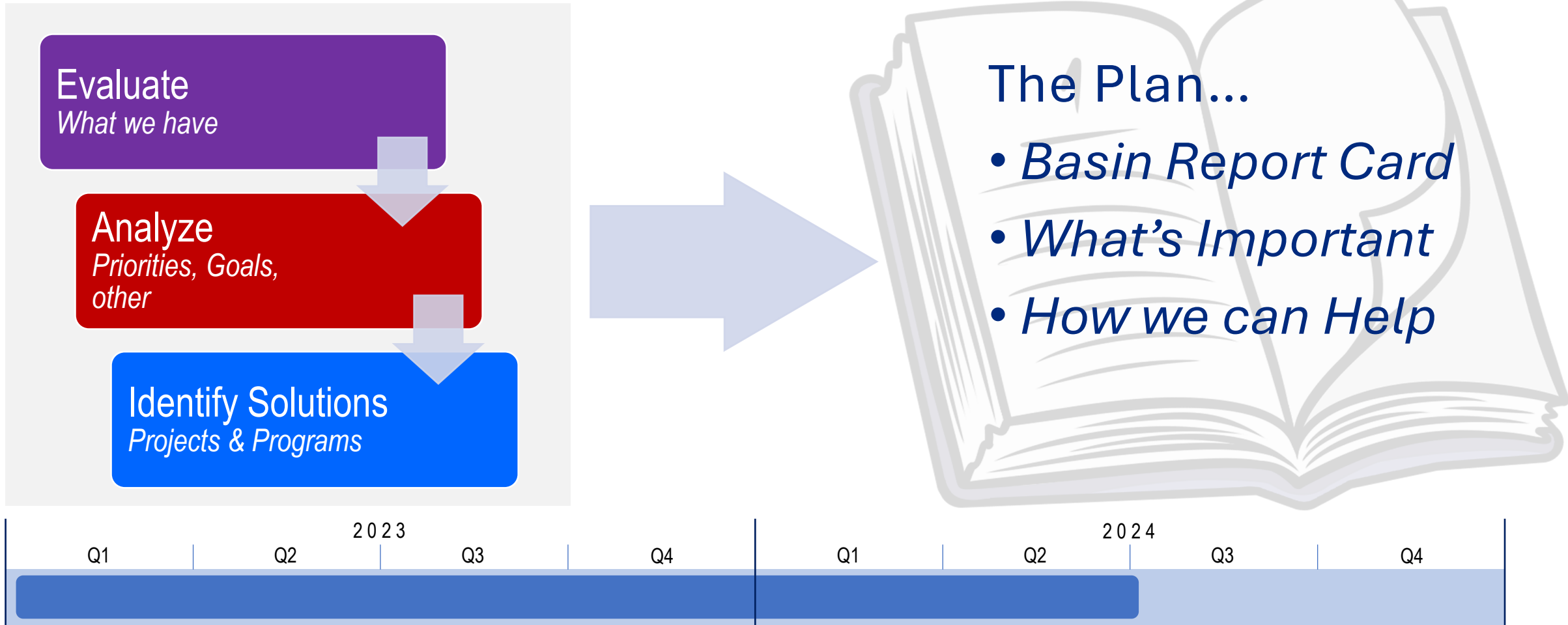
Projects

- Pond Retrofit for Crossings at PLC (City facility D29928)
- Flood Reduction on 212th Ave SE
- Sammamish Woods Div 3 retrofit
- Loree Estates WQ retrofit (198th Place SE)
- Loree Estates detention & WQ retrofit (203rd Ave SE)
- Pine Lake Creek restoration at 210th Place SE

Stormwater CIP Prioritization

Resolution R2018-804

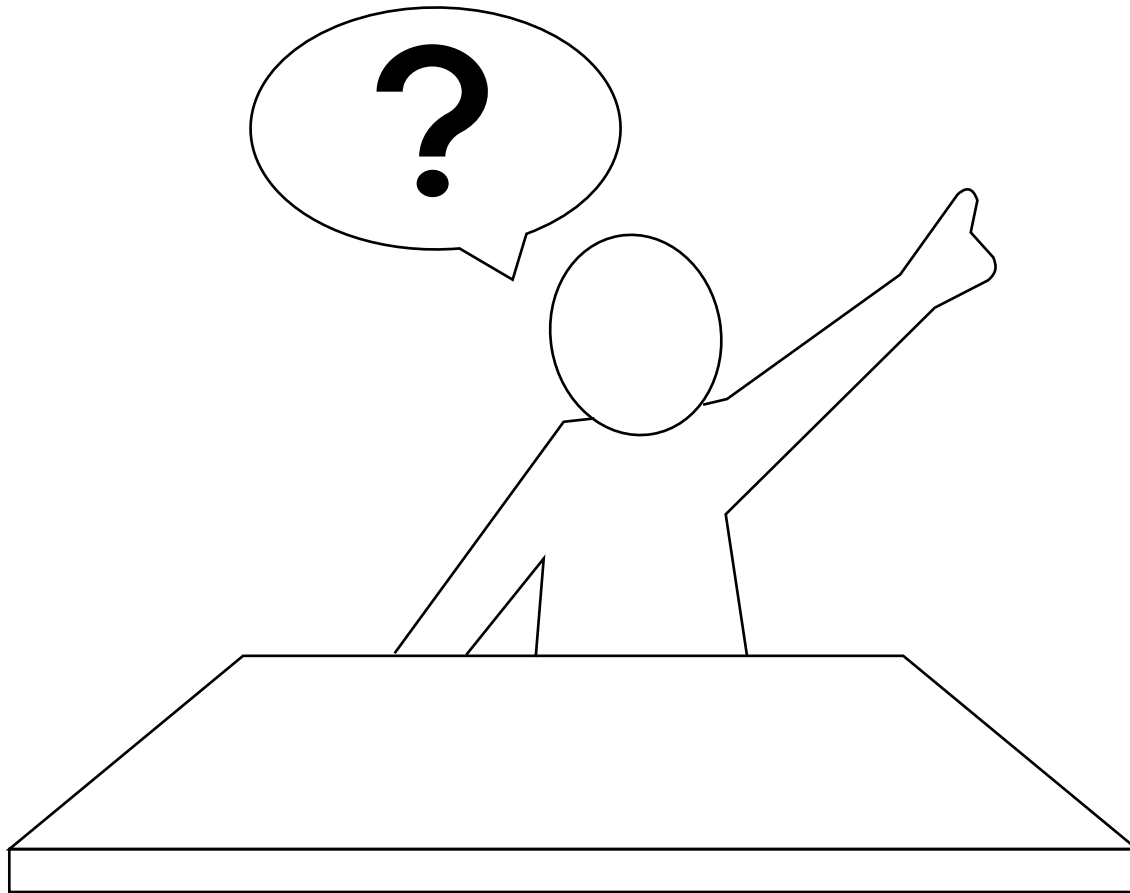
Current Status



Highlights & Next Steps

Work Element or Activity	2023			2024												2025		
	Jan	Feb	Mar	Apr	May	June	July	Aug	Sep	Oct	Nov	Dec	Jan	Feb				
Public Feedback	★	★	★															★
Prepare Report	Stakeholder July 10	Open House Sep 26	Stakeholder Dec 7															
SEPA Process																		
Council Activity																		

Questions



Feedback

- tcoenen@sammamish.us
- <https://www.sammamish.us/projects/pine-lake-creek-basin-plan/>



- SEPA Process
- Council Meetings