

---

# Conversation with Sammamish Parks & Recreation Commission

# Agenda:

1. Arts Strategic Plan scope
  2. Public engagement do date
  3. Current arts + culture programs in parks
  4. Criteria for public art selection and siting
  5. Opportunities
-

---

# Meeting objectives

1. Understand goals and scope of Arts Strategic Plan
2. Understand your challenges and triumphs you've experienced with arts and culture in the parks.
3. Understand opportunities for using arts and culture in the parks.

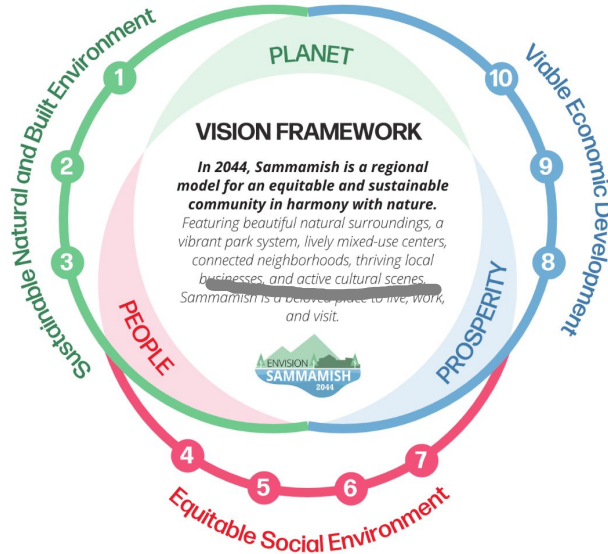
---

---

# Arts Strategic Plan Purpose:

Produce a plan that will allow the City to strategically expand the presence and role of public art and arts programming to further the city's vision.

# City Vision



## Vision Strategies

### Sustainable Natural and Built Environment

- 1 Sustain Natural Environment and Reduce Climate Impacts. The City aims to protect tree canopies, water features, and natural habitats to sustain the natural environment. The City is committed to reducing and mitigating the climate impacts from buildings, transportation, and City operations.
- 2 Develop Multimodal Transportations. Work with King County Metro and other transit providers to enhance connectivity within Sammamish and access to the surrounding cities, including walking, biking, and transit network.
- 3 Develop a Distinguished Park and Recreation System. Create a park, open space, and recreational system that incorporates cultural amenities, and leveraging the unique natural resources of the Pacific Northwest to promote environmental conservation.

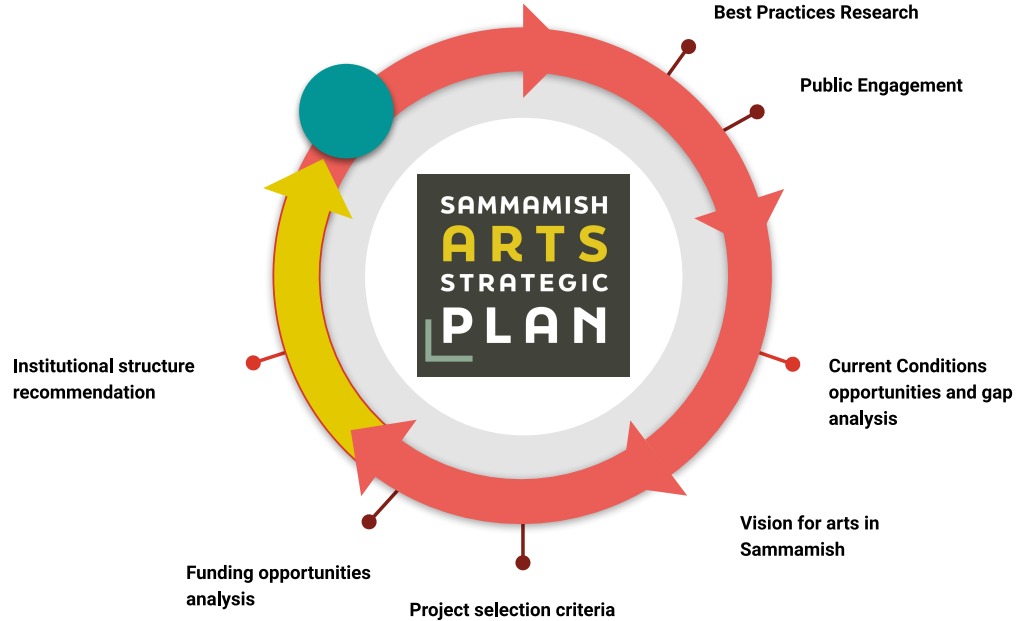
### Equitable Social Environment

- 4 Ensure Inclusive, Connected, and Safe Neighborhoods. Plan neighborhoods that are safe, where people can meet, interact, and access retail, restaurants, key services, and other amenities within walking distance.
- 5 Provide a Variety of Housing Choices and Support a Wide Array of Lifestyles. Expand the range of available housing options to provide affordable and appropriate housing for individuals based on their needs and income.
- 6 Increase Diverse Job Opportunities and Access to Work in Sammamish. Many residents commute outside of Sammamish for employment; increase opportunities for work within Sammamish.
- 7 Foster Diversity, Equity and Inclusion through Purposeful Engagement and Quality Human Services. The City will maintain ongoing communication and engagement with the community and organizations on critical planning issues, provide opportunities for input and feedback, and promote the provision of high-quality human services to create an inclusive and welcoming environment.

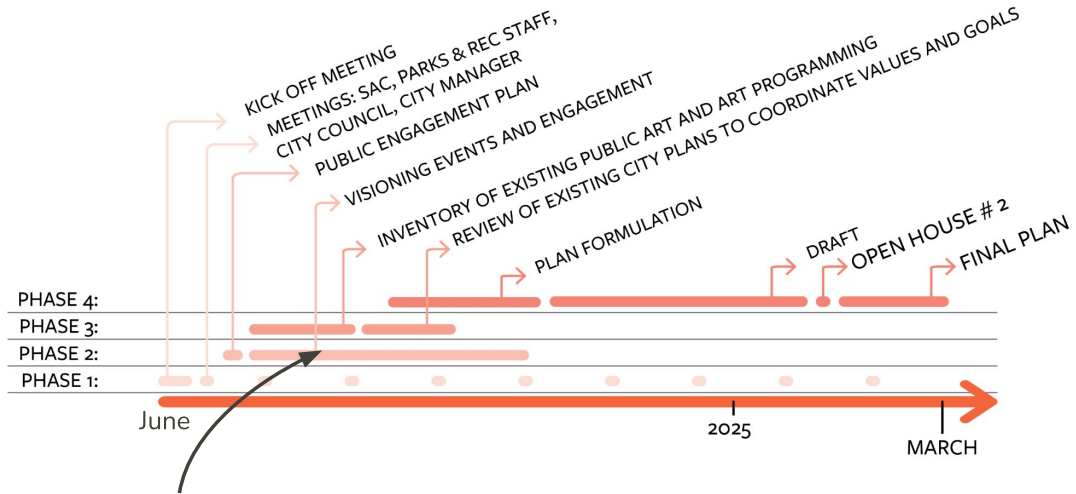
### Viable Economic Development

- 8 Build Thriving Town Center and Mixed-use Districts. The City will support the development of the Town Center that reflects Sammamish's identity and encourage redevelopment of walkable mixed-use districts for more housing, retail, services and amenities.
- 9 Support Local Businesses and Entrepreneurship. Provide support for a thriving local economy and nurture the community's entrepreneurial spirit.
- 10 Establish Fiscal Sustainability and Diversify Revenues for the City. The City is dedicated to improving and diversifying its tax base and revenue streams through economic development.

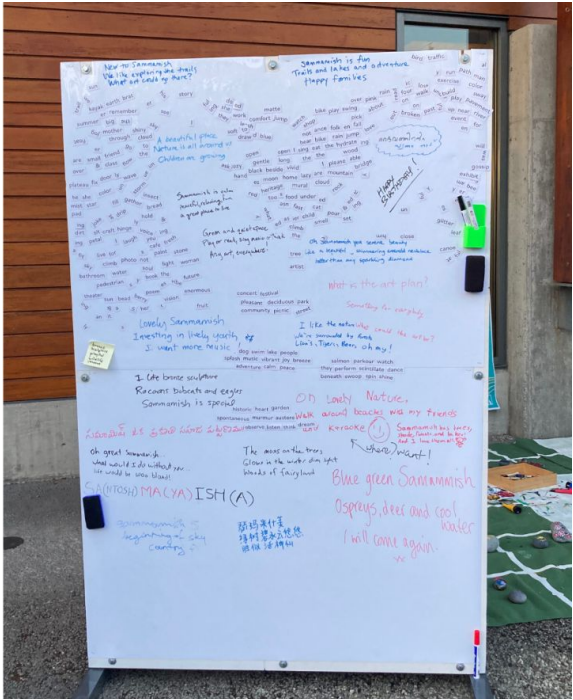
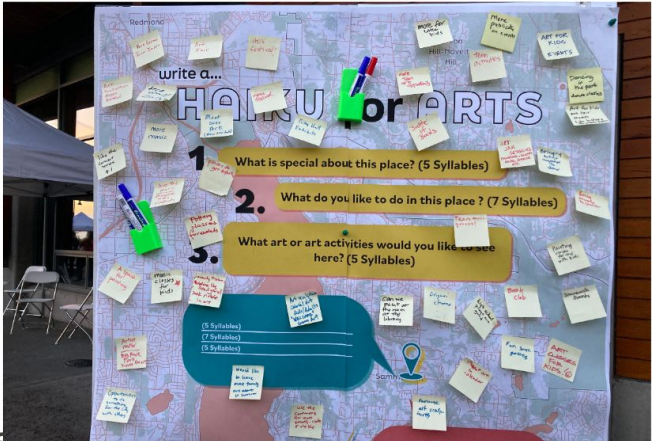
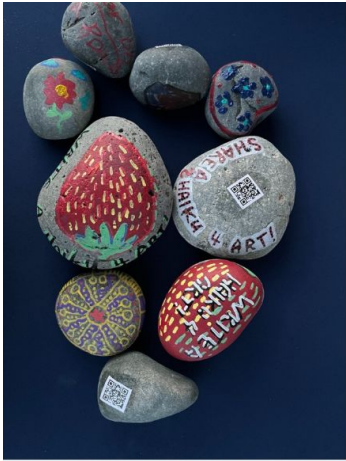
# Project scope



# Anticipated timeline:



We are here



# Community events tabling



---

# Key public engagement takeaways

- More arts programming like painting classes
- Indoor venues are desired
- Sammamish's natural environment is a point of pride that could be enhanced through art
- Desire for more kid and senior arts programming
- The Commons is a great place to host more activities and events

---

# Where does arts & culture fit into parks & rec?

---

# Arts & culture in parks

more art events - like shows or galleries or a festival

More programming like art classes

Utilizing existing park facilities

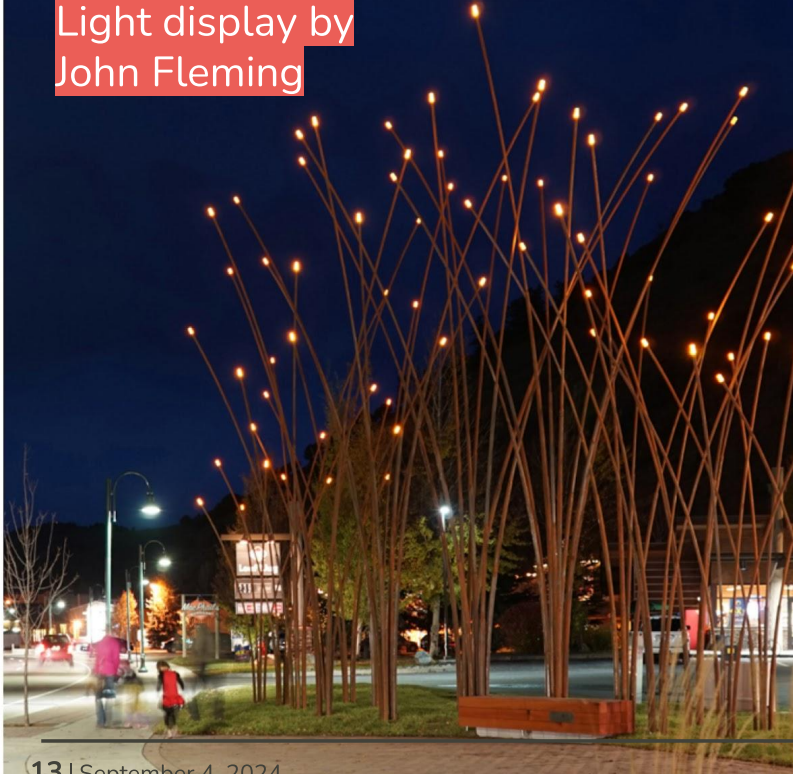
"good" art is a tricky question - criteria is challenging

## Vision & Mission

Sammamish's Parks and Recreation system is an integral part of our healthy and sustainable community by connecting people to nature, play and **culture**. Sammamish's Parks and Recreation system contributes to the quality of life for the community by creating a legacy of diverse and quality parks, exceptional recreation programs and protected natural resources.

How could arts and culture help meet the vision for the City and parks?

Atmospheric:  
Light display by  
John Fleming



13 | September 4, 2024

Functional:  
Squid bike rack  
Ballard, WA



Novel, but  
functional...

frisbee golf  
- could be  
whimsical

City of Sammamish / Arts Strategic Plan / 2025



Interactive:  
Bird Slide,  
Hobsonville, NZ



if there is a resonant theme or materiality that feels relevant to place

Crowd sourcing what goes into permanent collection

Gateway:  
Olympia, WA



More art = less dangerous

Temporary:  
Scrabble activation, Seattle



Play:  
Art + Recreation  
Skate Park

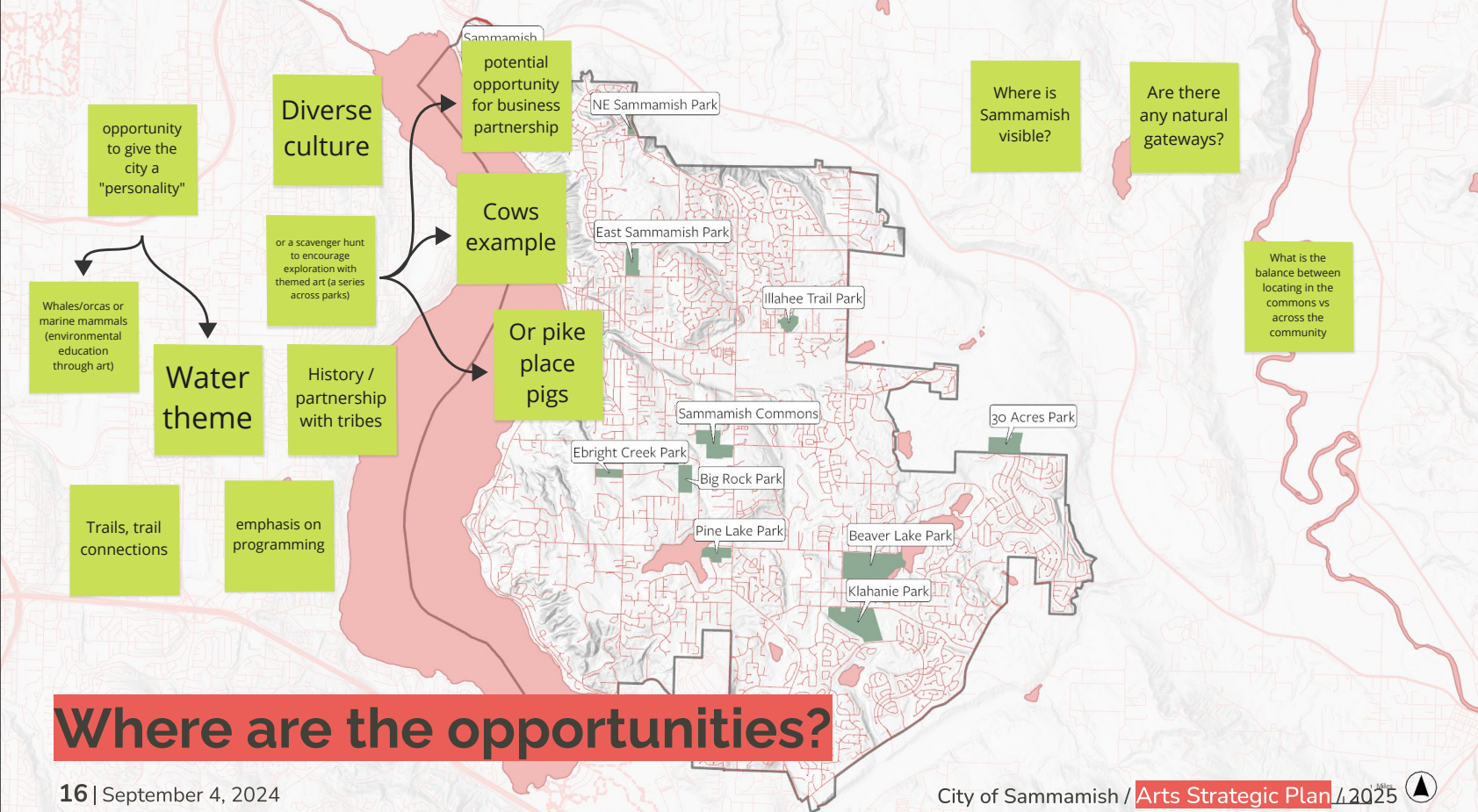


Space  
reconfiguration  
pilot, Seattle, WA

—

**Please respond to  
the community arts  
survey and pass it  
on :)**





opportunity to give the city a "personality"

Diverse culture

potential opportunity for business partnership

Where is Sammamish visible?

Are there any natural gateways?

or a scavenger hunt to encourage exploration with themed art (a series across parks)

Cows example

Whales/orcas or marine mammals (environmental education through art)

Water theme

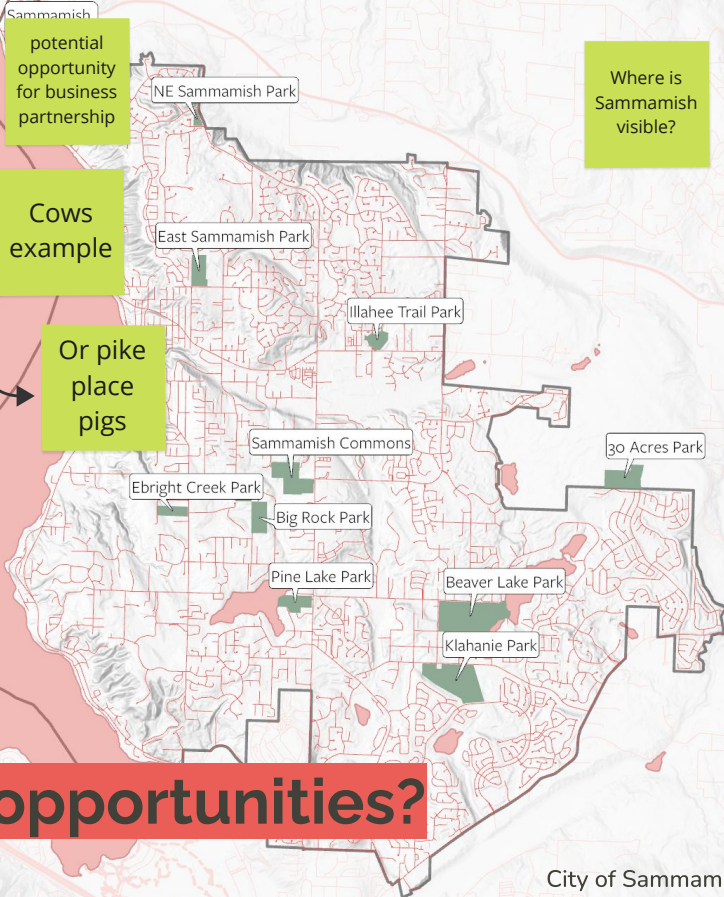
History / partnership with tribes

Or pike place pigs

What is the balance between locating in the commons vs across the community

Trails, trail connections

emphasis on programming



# Where are the opportunities?

