



Sammamish Arts Strategic Plan

City Council Study Session
March 11, 2025

Presentation Purpose

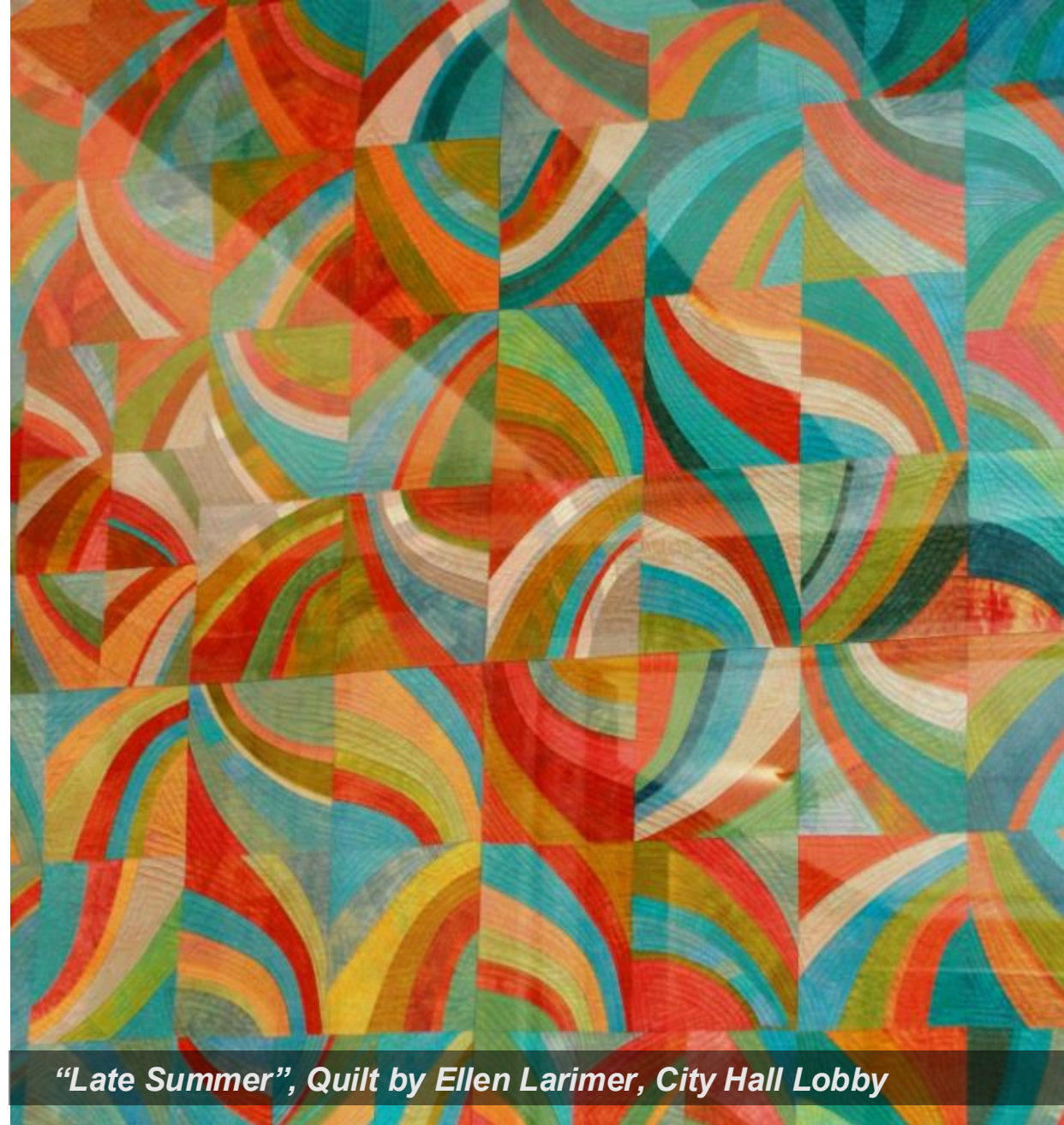
Confirm the Action Statement and Goals for the Arts Strategic Plan.



Community Engagement for Arts Strategic Plan

Presentation Agenda

- Arts in Sammamish today
- Action statement & goals
- City Policies & Public Engagement
- Discussion
- Plan delivery timeline



“Late Summer”, Quilt by Ellen Larimer, City Hall Lobby



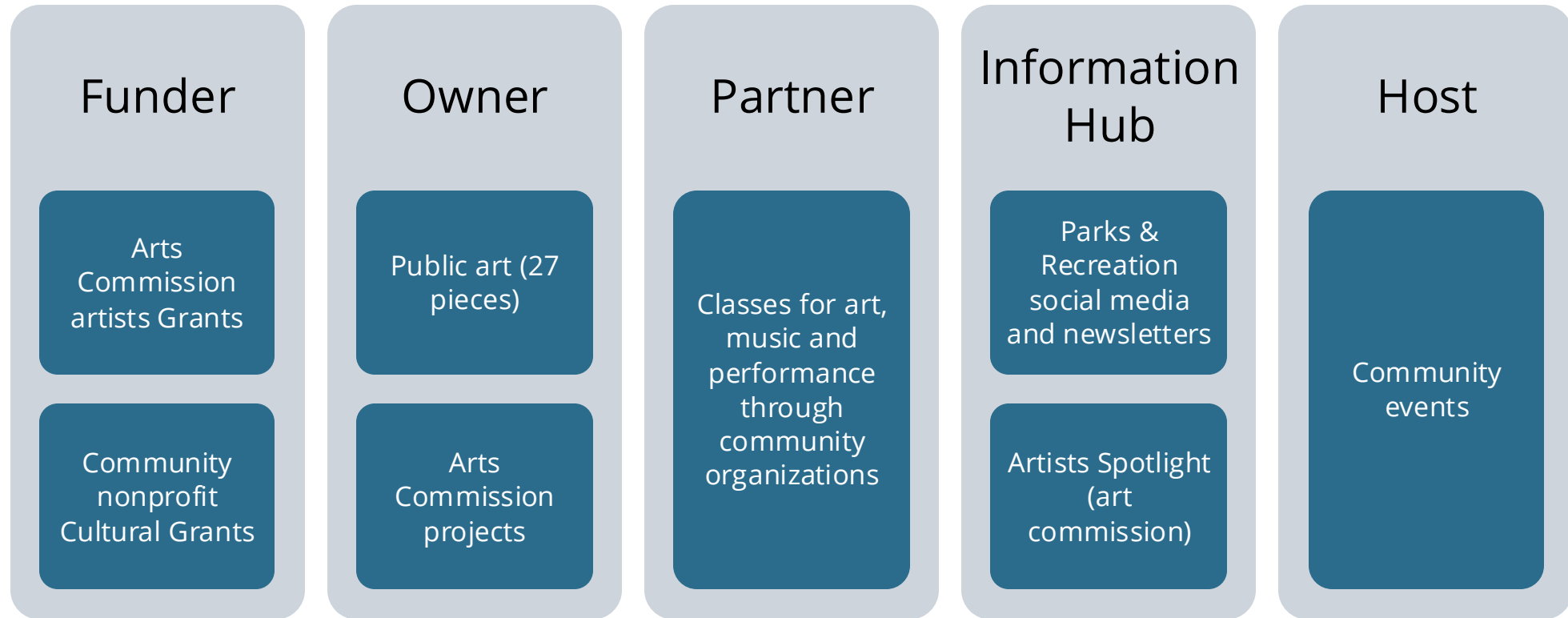
Arts Commission Involvement

- **Scope Refinement & Consultant Selection**
- **Community Engagement**
 - Tabling
 - Silver Jubilee
 - Farmer's Market
 - Healthy Living Fair
 - Survey development
- **Meetings**
 - June: Project Kick Off
 - July: Peer City Presentation
 - September: Budget Allocation Criteria
 - November: Project Selection Criteria
 - January: Action Statement & Goals



Sammamish Arts Commission, 2024

Arts in Sammamish Today



Arts Strategic Plan Action Framework



COMPREHENSIVE
PLAN VISION



PROS PLAN VISION



ART COMMISSION
MISSION STATEMENT



PUBLIC ENGAGEMENT



ARTS STRATEGIC PLAN ACTION STATEMENT

Arts Strategic Plan Action Framework



Comprehensive Plan Vision

“In 2044, Sammamish is a regional model for an equitable and sustainable community in harmony with nature. Featuring **beautiful natural surroundings, a vibrant park system**, lively mixed-use centers, connected neighborhoods, thriving local businesses, and **active cultural scenes**, Sammamish is a beloved place to live, work, and visit.”



PROS Plan Vision

“Sammamish’s Parks and Recreation system is an integral part of our healthy and sustainable community by **connecting people to nature, play, and culture...**”



Arts Commission Mission

“Integrating art and culture to create a **sense of place, civic identity, and unique character**”.



Public Engagement

Priorities: multicultural, intergenerational, accessible, highly visible, nature and sustainability focused, expanded live music and performance programming

Arts Strategic Plan Action Framework



Comprehensive
Plan Vision

“In 2044, Sammamish is a regional model for an equitable and sustainable community in harmony with nature. Featuring **beautiful natural surroundings, a vibrant park system**, lively mixed-use centers, connected neighborhoods, thriving local businesses, and **active cultural scenes**, Sammamish is a beloved place to live, work, and visit.”



PROS Plan
Vision

“Sammamish’s Parks and Recreation system is an integral part of our healthy and sustainable community by **connecting people to nature, play, and culture...**”



Arts Commission
Mission

“Integrating art and culture to create a **sense of place, civic identity, and unique character**”.



Public
Engagement

Priorities: multicultural, intergenerational, accessible, highly visible, nature and sustainability focused, expanded live music and performance programming

Arts Strategic Plan Action Framework



Comprehensive
Plan Vision

“In 2044, Sammamish is a regional model for an equitable and sustainable community in harmony with nature. Featuring **beautiful natural surroundings, a vibrant park system**, lively mixed-use centers, connected neighborhoods, thriving local businesses, and **active cultural scenes**, Sammamish is a beloved place to live, work, and visit.”



PROS Plan
Vision

“Sammamish’s Parks and Recreation system is an integral part of our healthy and sustainable community by **connecting people to nature, play, and culture...**”



Arts Commission
Mission

“Integrating art and culture to create a **sense of place, civic identity, and unique character**”.



Public
Engagement

Priorities: multicultural, intergenerational, accessible, highly visible, nature and sustainability focused, expanded live music and performance programming

Arts Strategic Plan Action Framework



Comprehensive
Plan Vision

“In 2044, Sammamish is a regional model for an equitable and sustainable community in harmony with nature. Featuring *beautiful natural surroundings, a vibrant park system*, lively mixed-use centers, connected neighborhoods, thriving local businesses, and *active cultural scenes*, Sammamish is a beloved place to live, work, and visit.”



PROS Plan
Vision

“Sammamish’s Parks and Recreation system is an integral part of our healthy and sustainable community by *connecting people to nature, play, and culture...*”



Arts Commission
Mission

“Integrating art and culture to create a *sense of place, civic identity, and unique character*”.



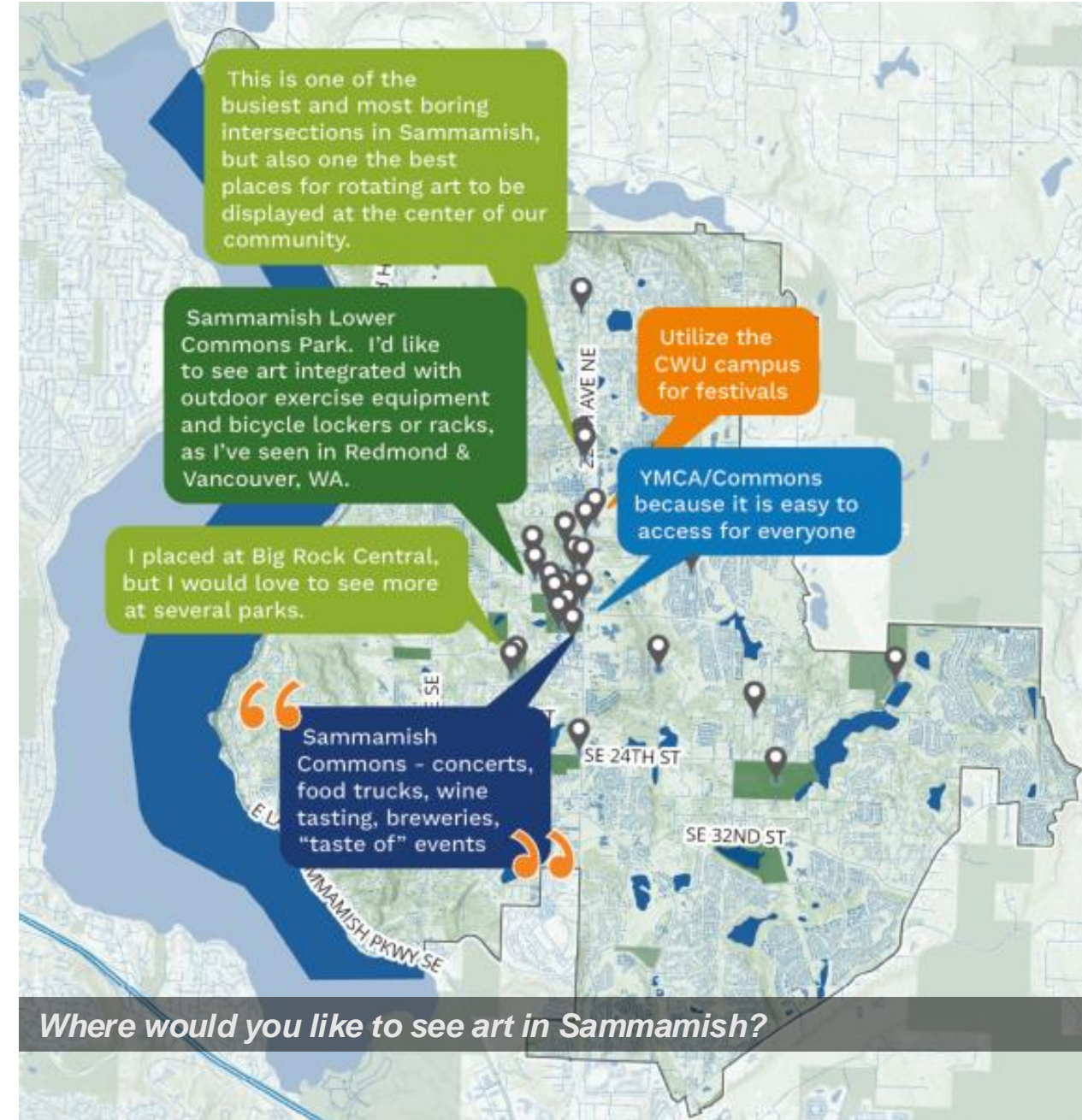
Public
Engagement

Priorities: multicultural, intergenerational, accessible, highly visible, nature and sustainability focused, expanded live music and performance programming



PUBLIC ENGAGEMENT cont.

- **Public art:**
 - More functional art
 - Diversity, and natural beauty represented through art
- **Arts and culture programming:**
 - More music and performing arts events
 - More events focusing on cultural exchange
- **Public art and arts programming locations:**
 - Sammamish Commons
 - Public parks and open spaces
 - 228th Corridor & other major arterials



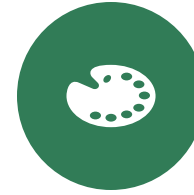
Arts Strategic Plan Action Framework



COMPREHENSIVE
PLAN VISION



PROS PLAN VISION



ART COMMISSION
MISSION STATEMENT



PUBLIC ENGAGEMENT



ARTS STRATEGIC PLAN ACTION STATEMENT

Arts Strategic Plan Action Statement



The City of Sammamish will take purposeful actions to leverage arts and culture in bringing its community visions to life through public art and programming that:

- Ensures equity and accessibility for all residents of Sammamish
- Celebrates and highlights the community's cherished natural surroundings
- Adds vibrancy to the City's mixed-use centers and trail connections
- Strengthens the local economy by offering cultural opportunities and supporting local artists

Arts Strategic Plan Action Framework



ARTS STRATEGIC PLAN ACTION STATEMENT



GOALS



PUBLIC ART

Invest in high impact public art.



EVENTS

Work to provide events and performances that span generations and cultures to build community and connection amongst Sammamish residents.



CAPACITY BUILDING

Foster local organizations and develop partnerships to increase arts and culture opportunities in Sammamish.

Public Art



Invest in high impact public art.

1. Prioritize **sculptures** and **art pieces** that invite **community engagement and playfulness**.
2. **Develop a plan to incorporate functional art** into future capital facilities projects.
3. **Consistently activate high activity locations** such as the Sammamish Commons with high quality public art.
4. **Prioritize art** in places that **facilitate community connection** such as **parks, trails, and major right of ways** such as 228th.
5. **Provide opportunities for artists across skill levels and cultural backgrounds** to showcase their art by expanding City art requests to include calls for temporary art and art exhibitions.
6. **Solicit art that honors and centers Sammamish's natural heritage, history, diversity, and indigenous cultures.**

Events



Work to provide events and performances that span generations and cultures to build community and connection amongst Sammamish residents.

- 1. *Prioritize year-round arts and culture events*** in indoor city facilities, and partner with community organizations to access additional indoor venues.
- 2. Provide opportunities for community groups to host *intercultural events*.**
- 3. *Use City communication tools*** to help partner community organizations get out the word about their events.

Capacity Building



Grow the capacity of the City's arts and culture program and its local artists and organizations to support desired offerings for the residents of Sammamish.

1. ***Collaborate with neighboring cities*** and ***regional organizations*** to host theater productions, live music, and cultural performances.
2. ***Develop joint programming initiatives*** that celebrate regional diversity and create opportunities for intercultural exchange.
3. ***Cultivate partnerships with community organizations*** to produce a balanced events and programming calendar serving all members of the community.
4. ***Reduce transportation barriers*** for low mobility populations wishing to access arts & culture programming.



Does this Action Statement reflect the existing City vision?

Arts Strategic Plan Action Statement



The City of Sammamish will take purposeful actions to leverage arts and culture in bringing its community visions to life through public art and programming that:

- Ensures equity and accessibility for all residents of Sammamish
- Celebrates and highlights the community's cherished natural surroundings
- Adds vibrancy to the City's mixed-use centers and trail connections
- Strengthens the local economy by offering cultural opportunities and supporting local artists



Do these goals support the Action Statement and the City?

Arts Strategic Plan Action Framework



GOALS



PUBLIC ART

Invest in high impact public art.



EVENTS

Work to provide events and performances that span generations and cultures to build community and connection amongst Sammamish residents.

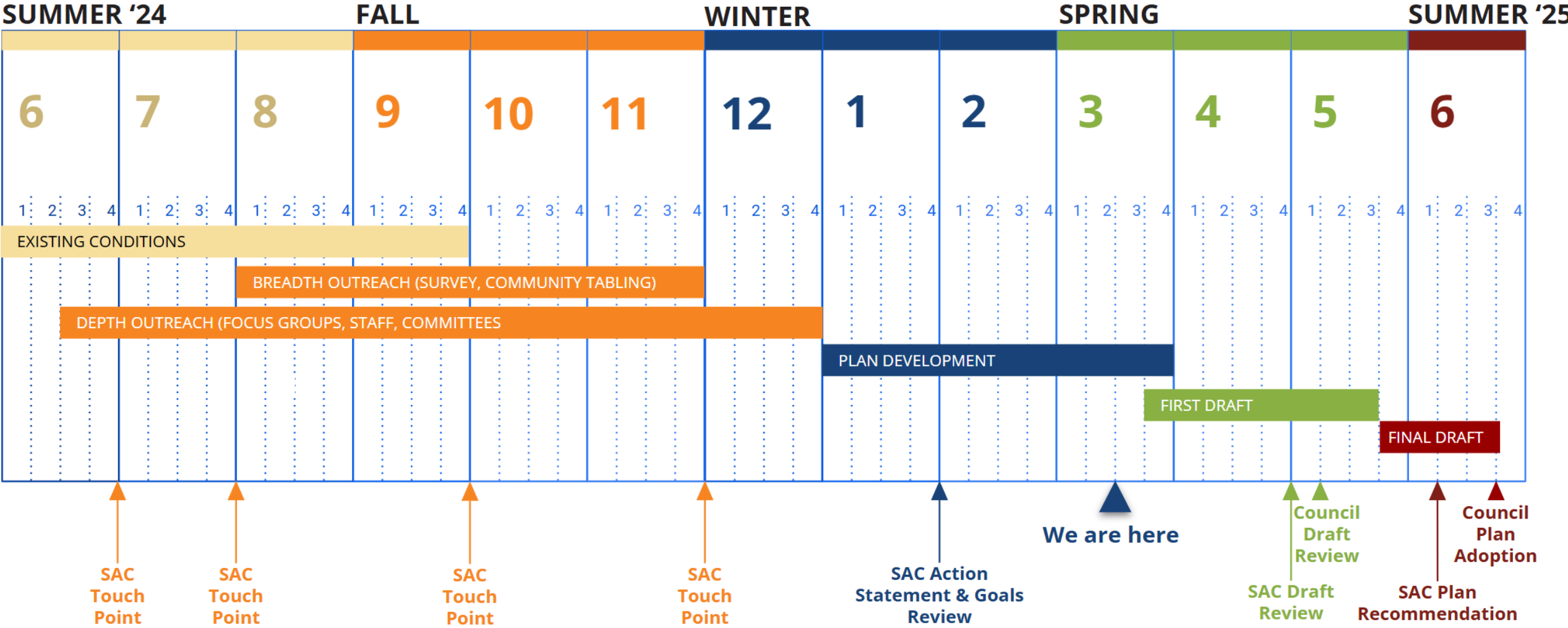


CAPACITY BUILDING

Foster local organizations and develop partnerships to increase arts and culture opportunities in Sammamish.

**Any additional
questions or comments?**

Plan Delivery Timeline



Next Steps

- **April:** SAC Full Draft Review
- **Early May:** Council Full Draft Review
 - *Framework incorporates feedback and delivers final plan to City Staff*
- **Late May:** SAC Recommends Plan Adoption
- **June:** Council Adoption

What's to come:

- Executive Summary
- Implementation Strategies
- Peer City Analysis
- Toolkit for Arts Commission and Staff

Thank you!
