

WELCOME!

The City of Sammamish is developing a comprehensive plan for the Pine Lake Creek watershed, including Pine Lake. Known as the Pine Lake Creek Basin Plan (Basin Plan), it will provide an assessment of the current state of the basin and create priority strategies, projects, and actions to tackle issues such as flooding, erosion, water quality, and ecological concerns within the basin. We want to improve and protect our lake and watershed to preserve this natural resource for everyone to safely enjoy now and in the future.

AT THIS OPEN HOUSE YOU CAN:

- Learn about the project and why it is important
- Get an overview of the timeline and process
- Learn about known issues and challenges
- Help identify issues and challenges
- Talk with City staff and project team members about your priorities and concerns in the basin

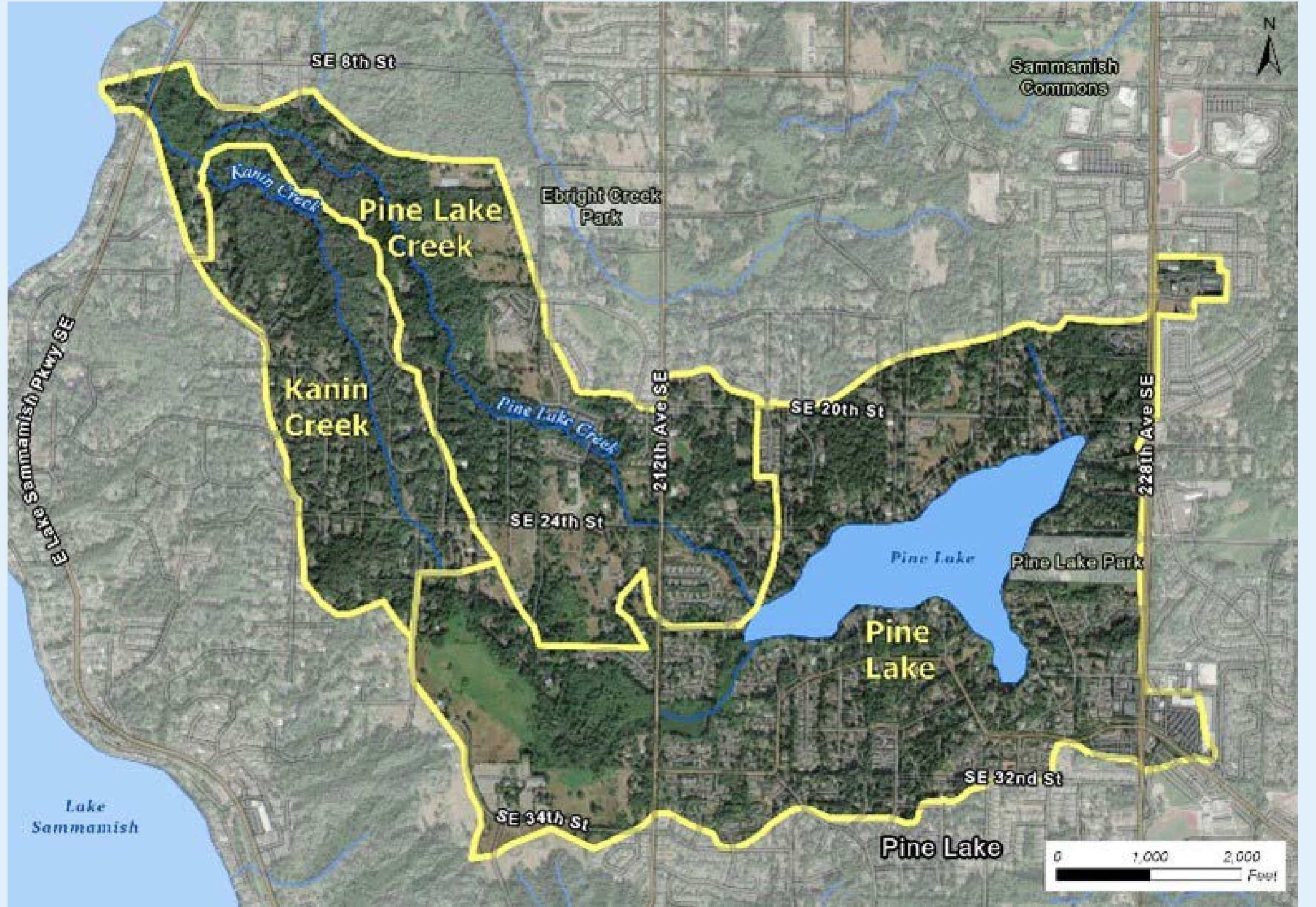
We're so glad you are here!



PROJECT BACKGROUND AND OVERVIEW

The basin includes Pine Lake, Pine Lake and Kanim creeks, and a sphagnum bog complex along with several smaller wetlands.

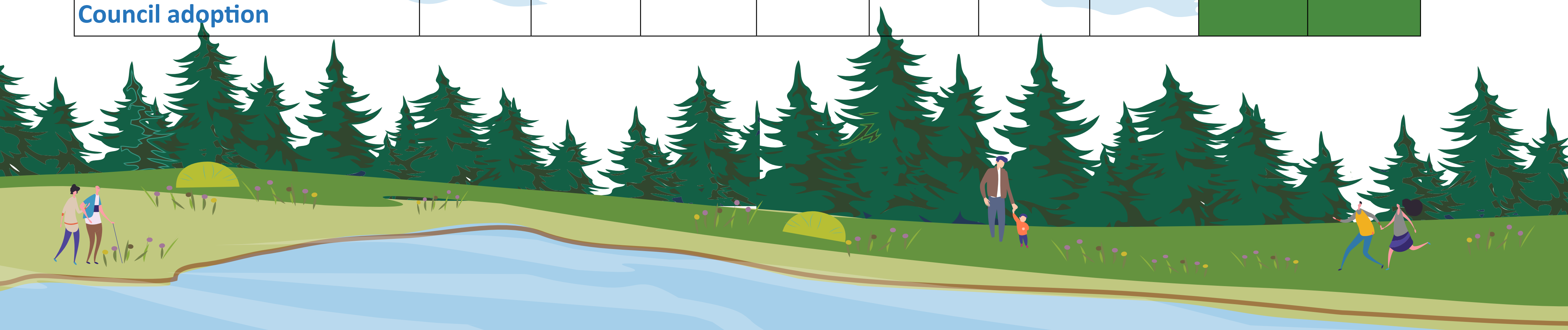
Pine Lake Creek drains approximately 1,200 acres near the south end of the Sammamish Plateau. The Pine Lake Creek Basin is one of our city’s most valuable resources. People not only enjoy recreating in and around the lake, but also playing a part in monitoring the health of the ecosystem.



The basin contains some of the largest remaining areas of contiguous forest within the city, and Pine Lake Creek has historically supported a substantial kokanee run and is still considered one of four primary Kokanee spawning streams within the city.

TIMELINE AND MILESTONES

	2023				2024					
	Spring	Summer	Fall	Winter	Winter	Spring	Summer	Fall	Winter	
Basin assessment and data collection										
Hydrologic modeling										
Lake and basin/stream stakeholder group session #1										
Open house #1										
Identify projects and strategies										
Lake and basin/stream stakeholder group session #2										
Open House #2										
Prepare basin report										
Environmental review/ Council adoption										



WHY ARE WE PLANNING?

The City is developing the Pine Lake Creek Basin Plan to thoroughly assess current basin conditions and identify strategies, projects, and programs to ensure the future health and enjoyment of the lake and basin for people and wildlife.

Continuous growth in the basin has affected historical kokanee runs, reduced water quality, and increased flooding and erosion.

A comprehensive Basin Plan will help the City protect one of the area's four primary kokanee spawning streams and some of the largest remaining areas of contiguous forests within Sammamish.



WHAT'S INCLUDED IN THE PLAN?

- Current state and conditions of the basin
- Strategies, projects, and programs
 - To address flooding, erosion, water quality, and ecological problems
 - That reflect the community's priorities



WHAT DO WE KNOW SO FAR?

LAKE ISSUES AND CHALLENGES

LAKE WATER QUALITY

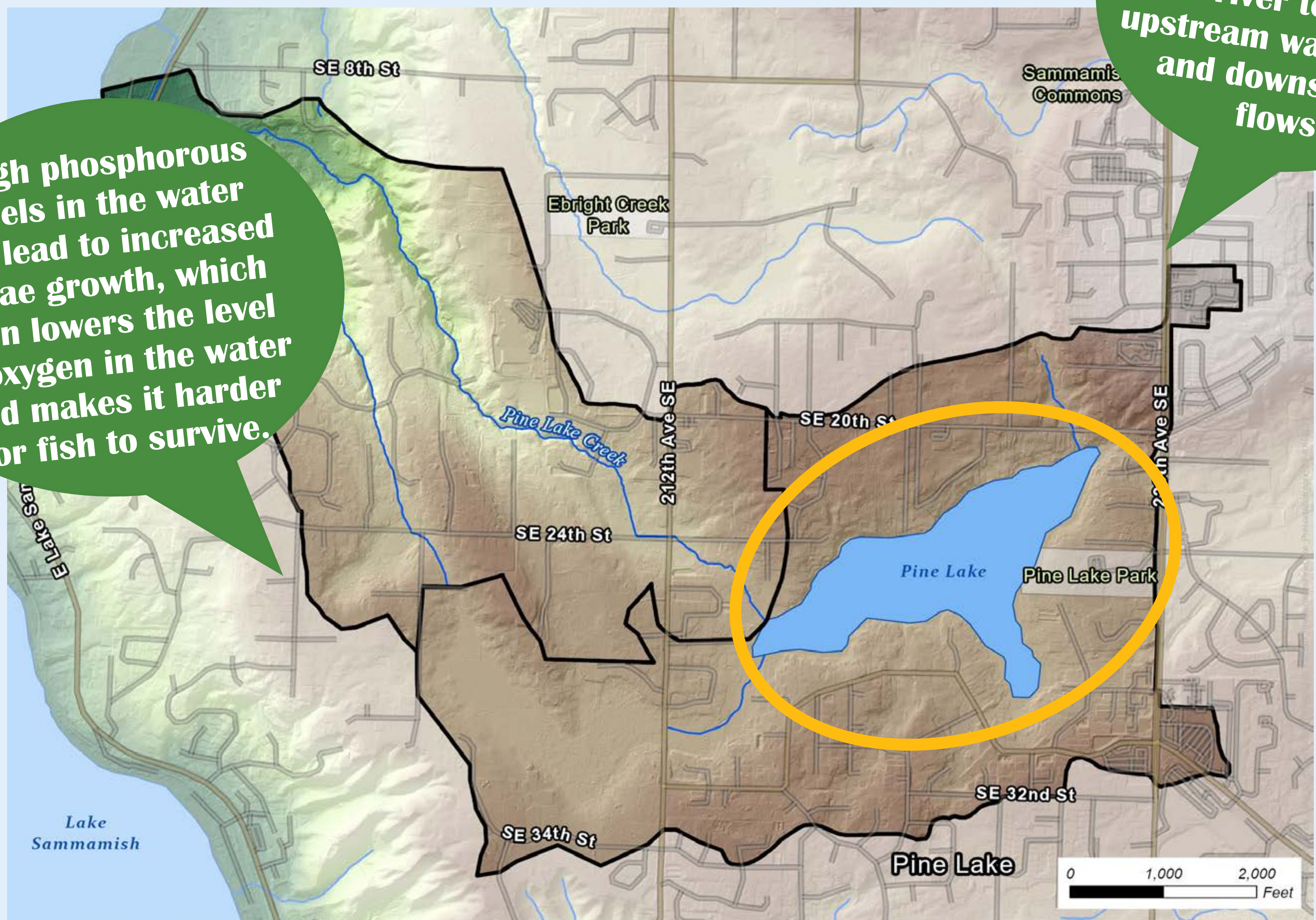
- Phosphorous and nutrient levels
- Sediment
- Suspended solids

WEIR OPERATIONS TO MAINTAIN LAKE LEVELS

- Structure needs repair
- Some areas have small leaks

High phosphorous levels in the water can lead to increased algae growth, which then lowers the level of oxygen in the water and makes it harder for fish to survive.

“What’s a weir?”
A weir is a barrier that crosses the width of a river to control upstream water levels and downstream flows.



WHAT DO WE KNOW SO FAR?

STREAM ISSUES AND CHALLENGES

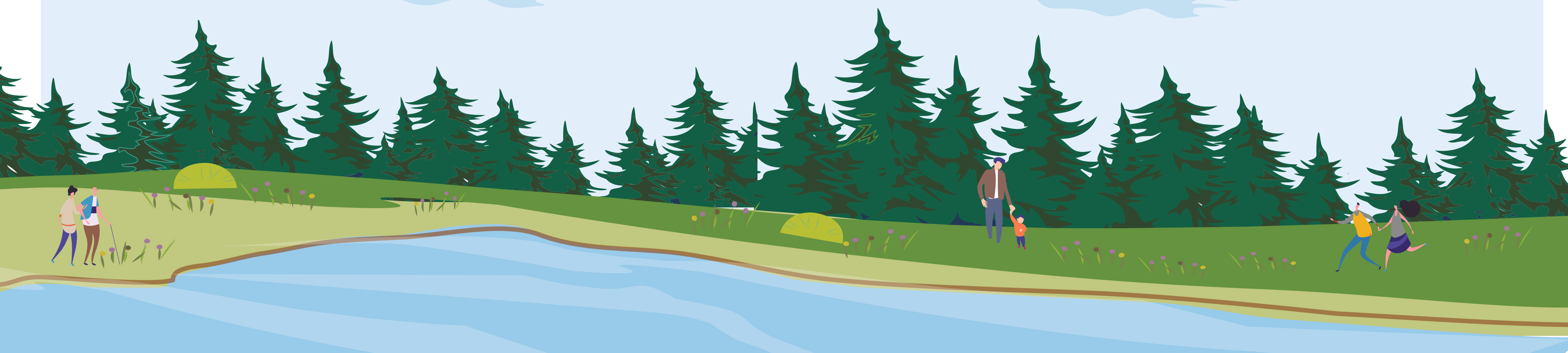
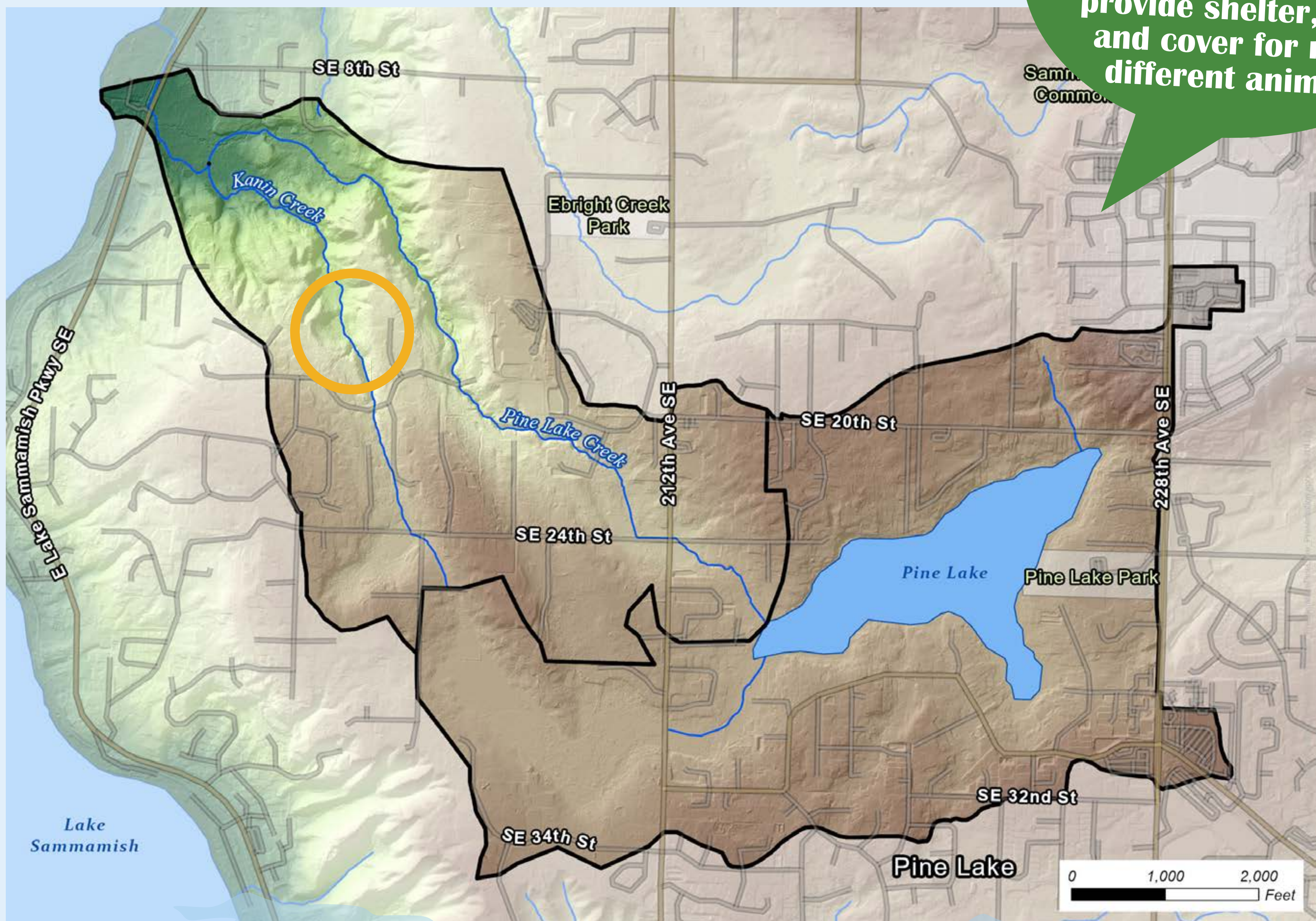
SEDIMENT ISSUES

- Landslide hazards
 - Hillslope failure on Kanim Creek
- Creek sedimentation from upstream hillslope failures

FISH HABITAT

- Correct fish passage barriers
 - Protect and restore riparian areas

A riparian habitat is the area around bodies of water such as rivers and lakes. These areas provide shelter, food, and cover for many different animals.



WHAT DO WE KNOW SO FAR?

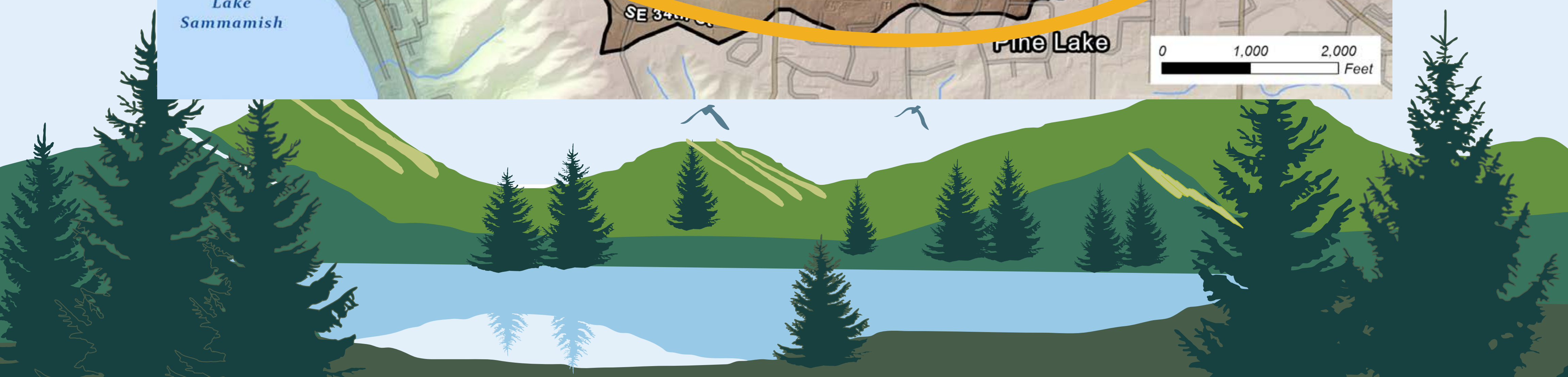
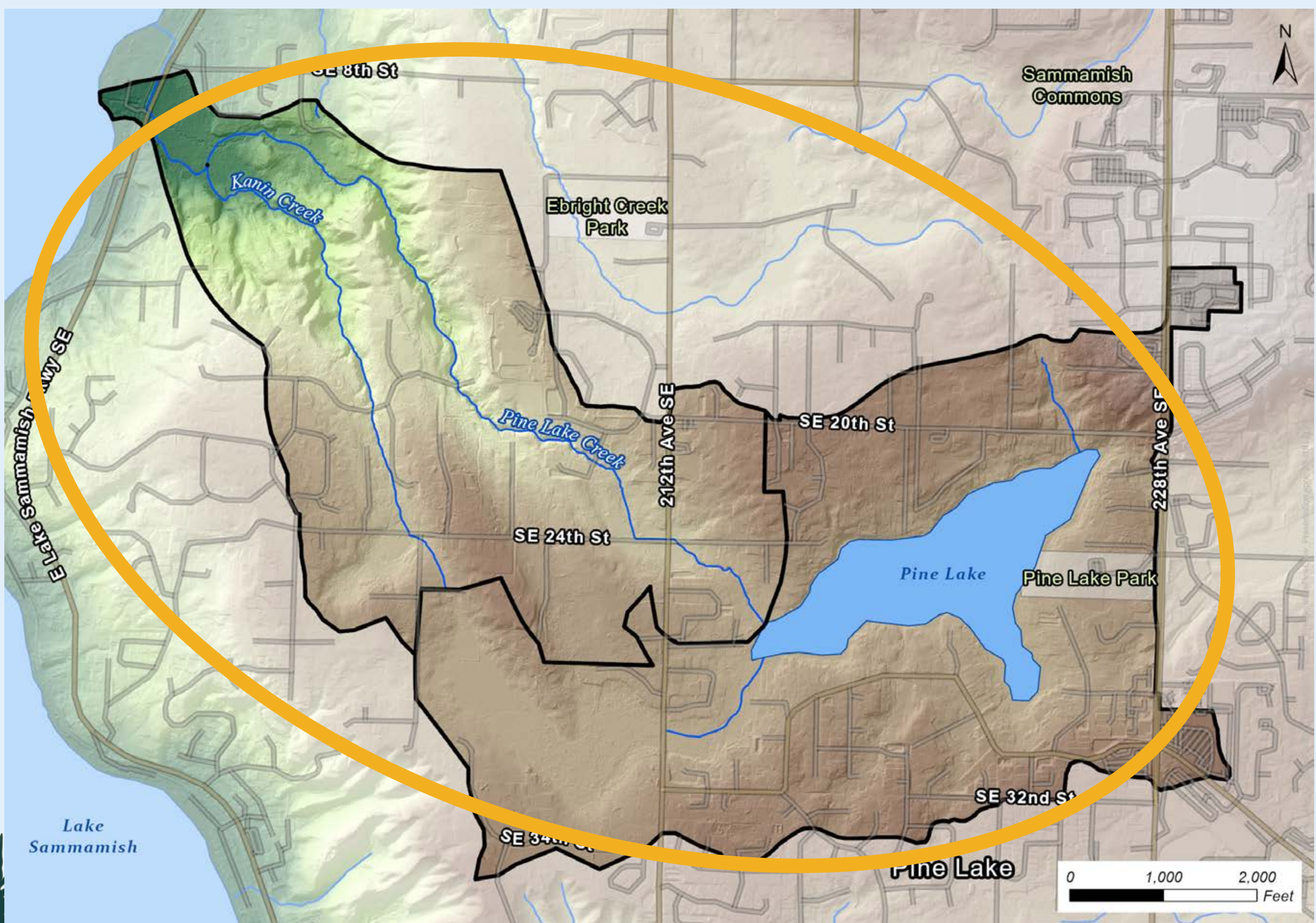
WATERSHED ISSUES AND CHALLENGES

STORMWATER MANAGEMENT

- Undersized ditches and loss of wetland storage leading to flooding and erosion
 - Need ponds and infiltration facilities to reduce flooding
- Older development was not required to provide as much stormwater treatment
 - Sediment and water quality
 - Erosive flows

CLIMATE CHANGE

- Can expect more frequent and intense rain storms

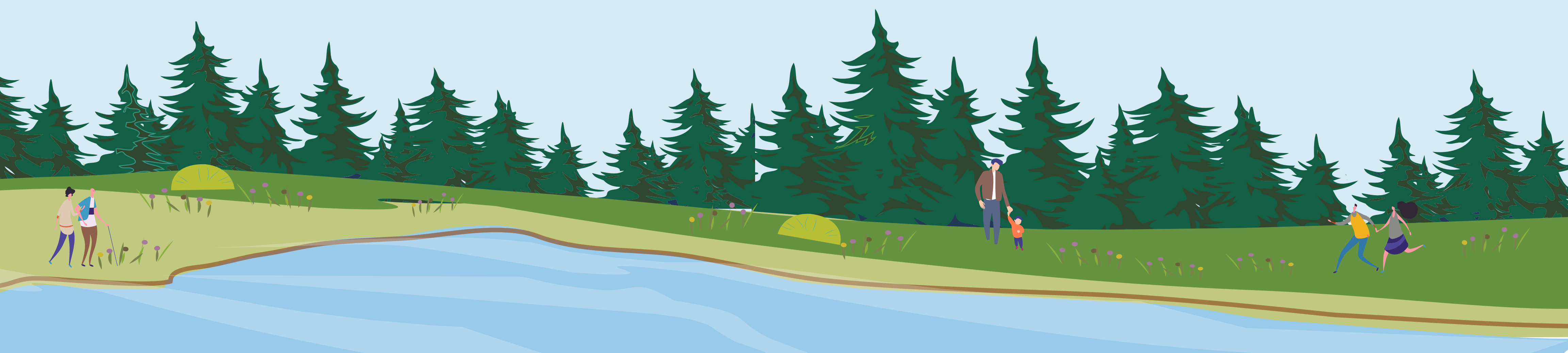


WHAT ELSE?

Where are other issues and challenges?

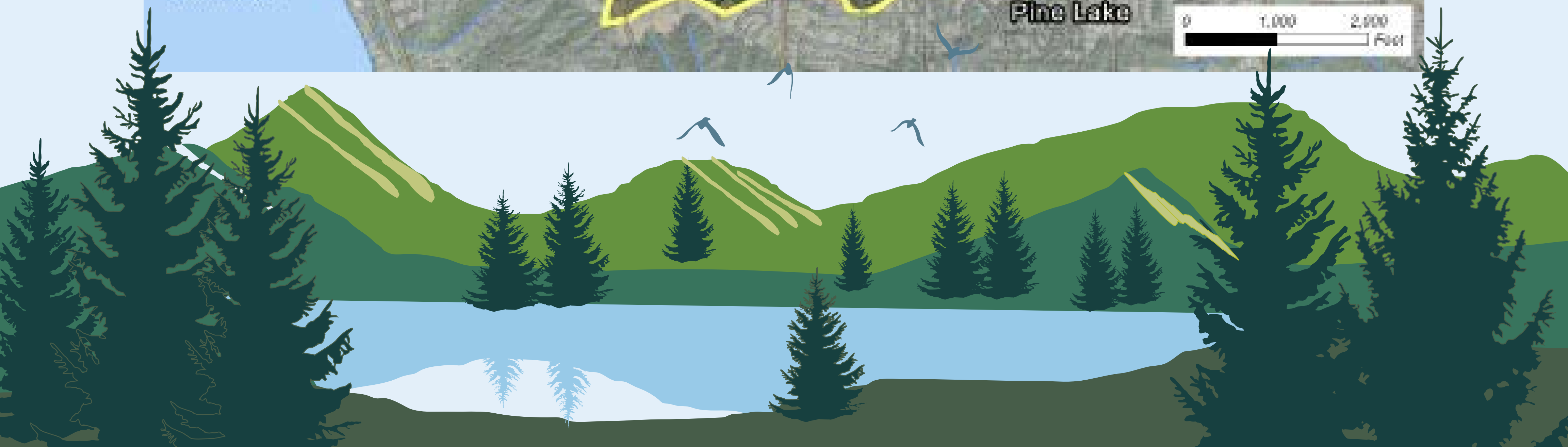
Use sticky notes to write a comment and then place them on the map below.

Comment



POTENTIAL SOLUTIONS WE ARE CONSIDERING

- Stormwater retrofit projects
- Support for sewer connections
- Culvert replacements for fish passage barriers
- Wetland and stream restoration projects
- Sustainable landscaping and rainwater management programs
- Homeowner incentives and recognition



STAY IN TOUCH!



Tell us what you think!

Thank you so much for visiting today and helping us improve and protect Pine Lake Creek Basin. Here are some ways to learn more and stay engaged:



VISIT THE WEBSITE

- Learn more about the Pine Lake Creek Basin Project, input opportunities, get project updates!
- <https://www.sammamish.us/government/public-works/stormwater/storm-and-surface-water-projects/>



CHECK OUT OUR STORYMAP

- Scan the QR code for more project information



FOLLOW ON SOCIAL MEDIA

- City of Sammamish - Government
- @CityofSammamish



ATTEND PUBLIC MEETINGS

- Come join us again at our spring 2024 open house. We will share the date closer to the event through our website, social media accounts, and a mailed postcard.

