



# Pine Lake Creek Basin Plan

Monday, July 10  
2023

Basin/Stream  
Stakeholder  
Discussion

and

Lake Stakeholder  
Discussion



# Agenda

- Welcome and Introductions – 15 minutes
- Meeting and Basin Plan Overview – 15 minutes
- Discussion/Questions – 55 minutes
- Wrap-up and Next Steps – 5 minutes

# Ground rules

1. I will do my best to keep an open mind
2. I will listen to what others have to say and do my best to understand
3. I will focus on the group discussion and avoid side conversations
4. I will let others participate
5. I will treat others with respect
6. I will think before speaking
7. It's ok to disagree, but I will do my best to find common ground
8. I will stay on topic
9. I will explore interests, not positions
10. I will tackle the topic, not the person

# Background

- Pine Lake Creek drains approximately 1,200 acres near the south end of the Sammamish Plateau.
- The Pine Lake Creek Basin has some of the highest resource value in the City of Sammamish. The basin includes Pine Lake, Kanim and Pine Lake creeks, and a sphagnum bog complex and several smaller wetlands.
- The basin contains some of largest remaining areas of contiguous forest within the city and Pine Lake Creek historically supported a substantial kokanee run and is still considered one of four primary spawning streams within the city.

# Why is the city developing a plan?

- Pursue resource protection to ensure long-term health of the lake and basin consistent with the Stormwater Comprehensive Plan.
- Ongoing development within the basin has affected historical kokanee runs, and the basin has experienced reduced water quality, flooding, and erosion.
- Despite this, Pine Lake Creek, is one of the area's four primary kokanee spawning streams and contains some of the largest remaining areas of contiguous forests within Sammamish.

# What's included in the plan?

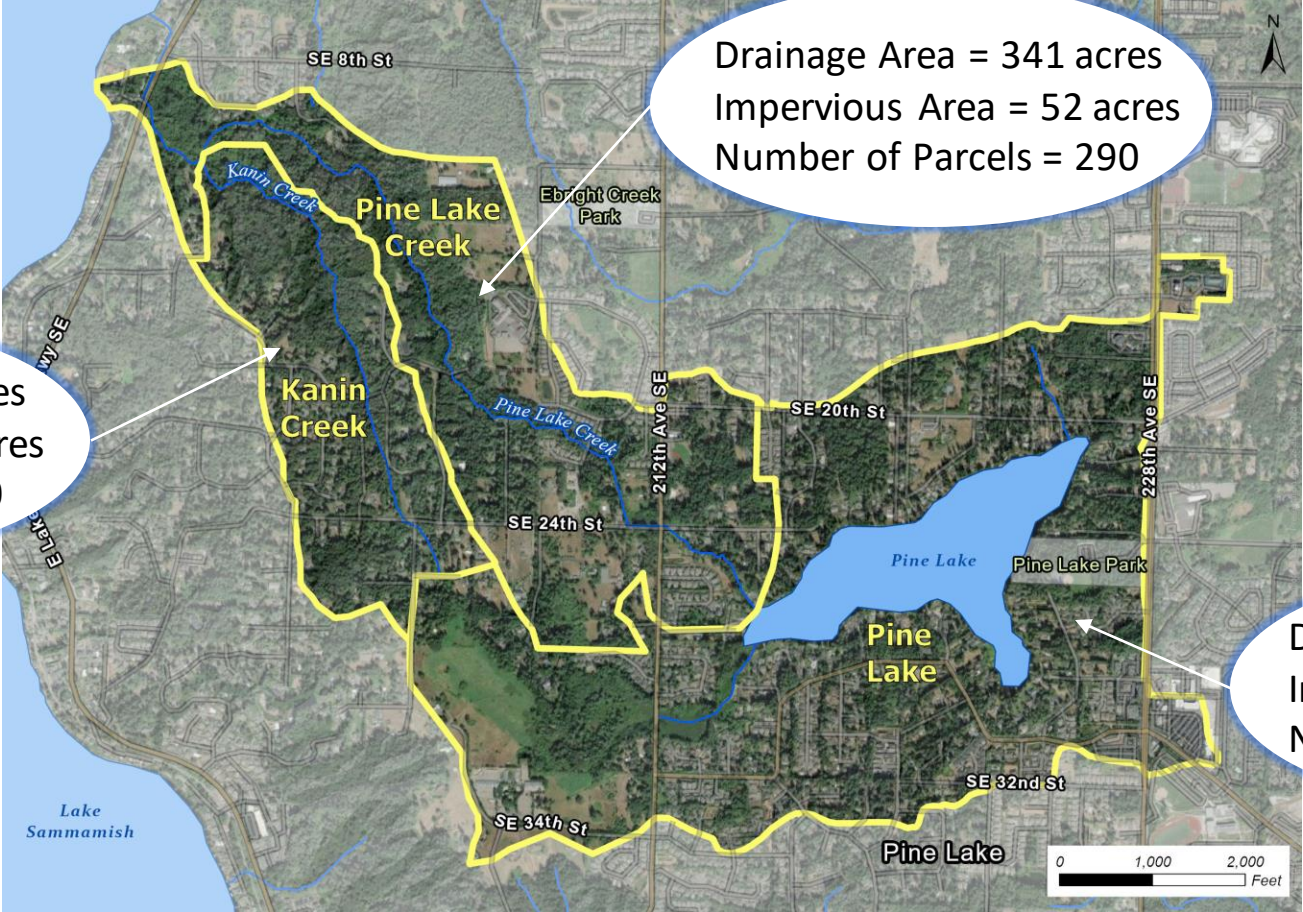
- The City of Sammamish is developing a basin plan for the Pine Lake Creek watershed, including Pine Lake, Kanim Creek, and Pine Lake Creek.
- The Pine Lake Creek Basin Plan (Basin Plan) will characterize existing conditions in the basin and develop priority strategies, projects, and actions to address flooding, erosion, water quality, and ecological problems in the basin and that reflect the community's priorities.
- Both future development and climate resiliency will be considered in prioritizing and designing projects and solutions.

# Current Management

- Very limited basin-specific management framework in place to guide development or other activities within the Pine Lake Creek basin.
- City-wide management framework through NPDES permit and King County Surface Water Design Manual and City amendments and codes.
  - Phosphorous Removal Standard
- Lake level
  - Weir built 1982
  - Owned by WDFW
- Lake Association



# Basin Contributing Area



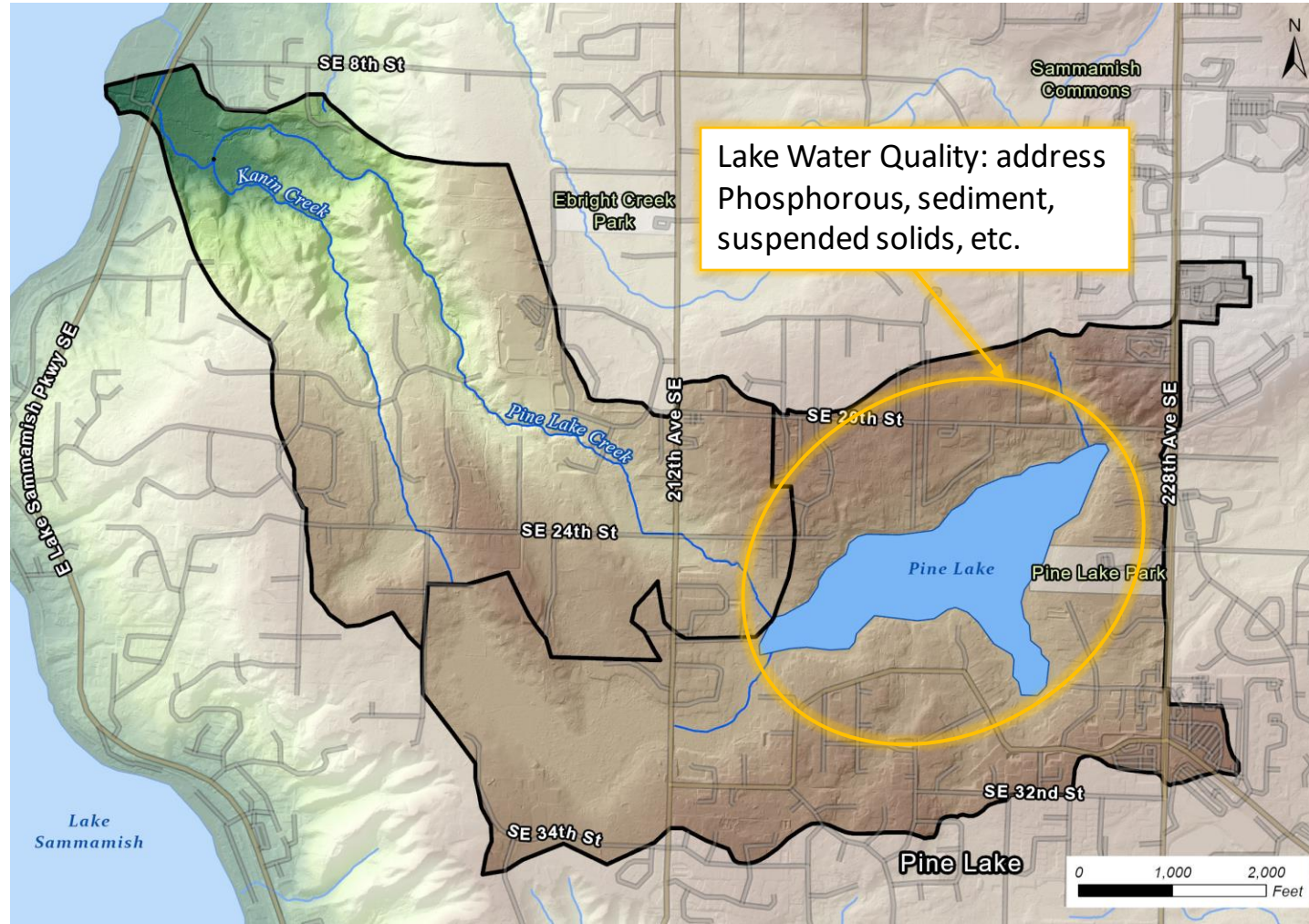
Drainage Area = 341 acres  
Impervious Area = 52 acres  
Number of Parcels = 290

Drainage Area = 185 acres  
Impervious Area = 22 acres  
Number of Parcels = 110

Drainage Area = 668 acres  
Impervious Area = 146 acres  
Number of Parcels = 760



# Lake Problem Areas



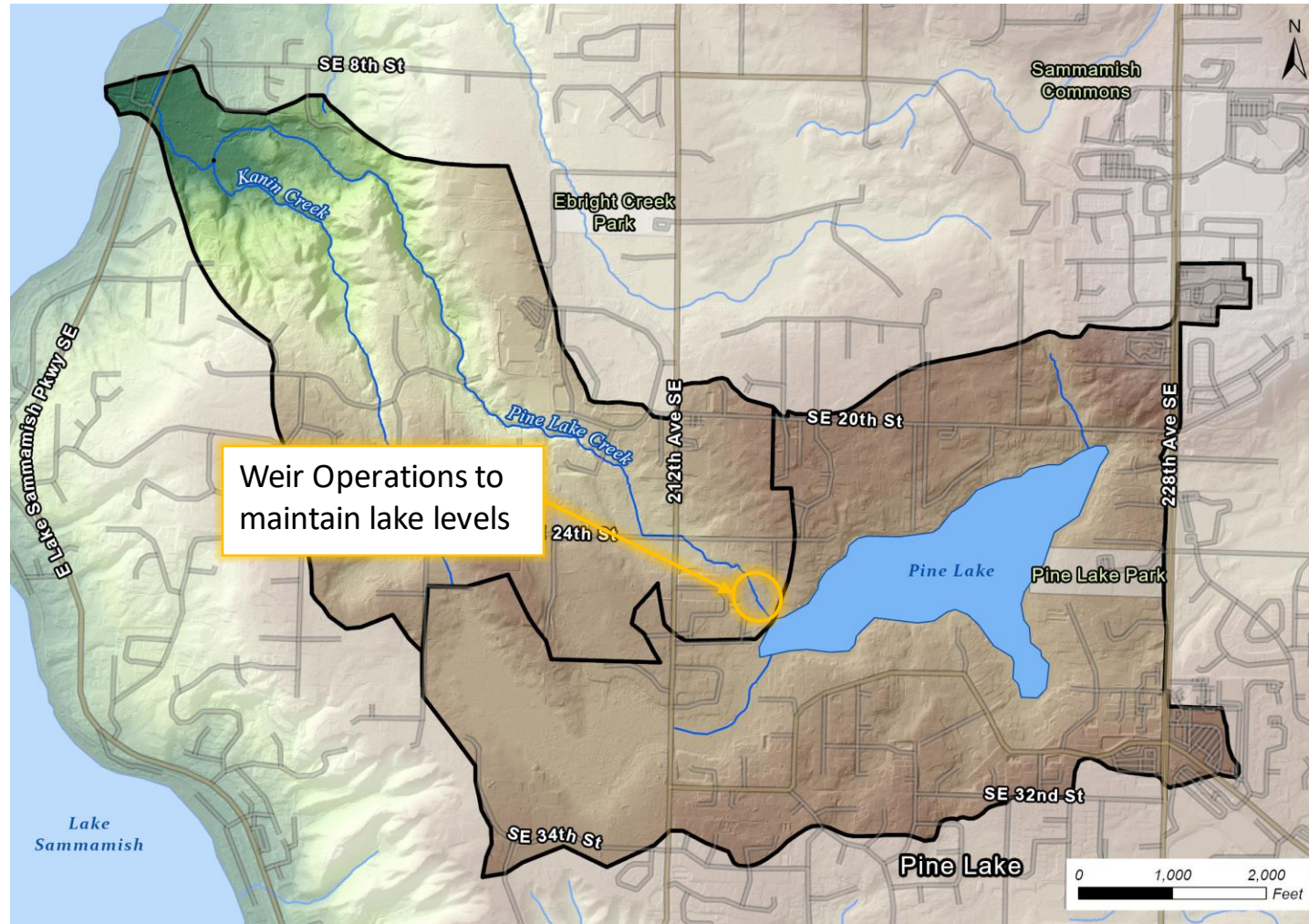
NHC, 2023



NHC, 2023



# Lake Problem Areas



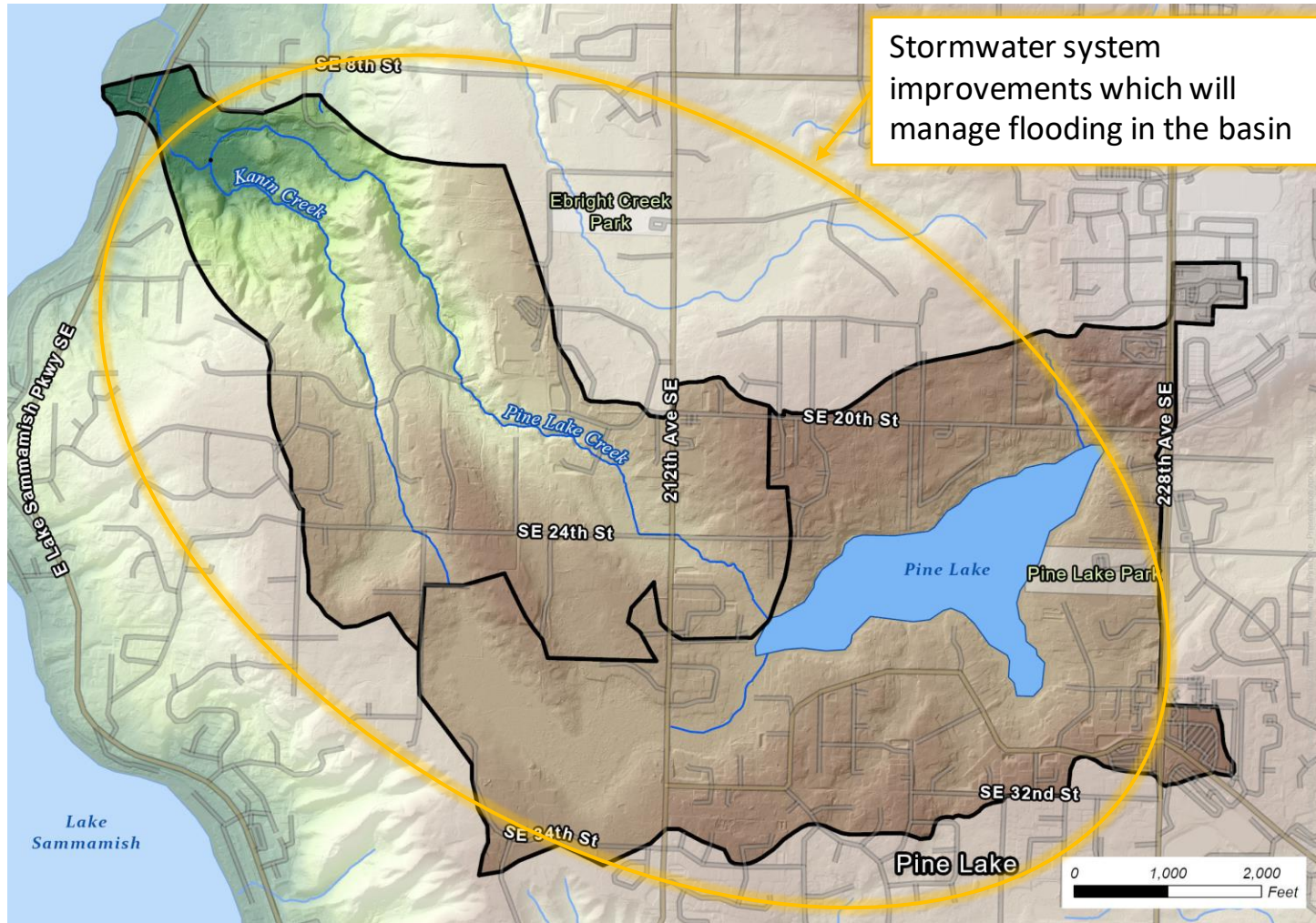
NHC, 2023



NHC, 2023



# Lake & Stream Problem Areas



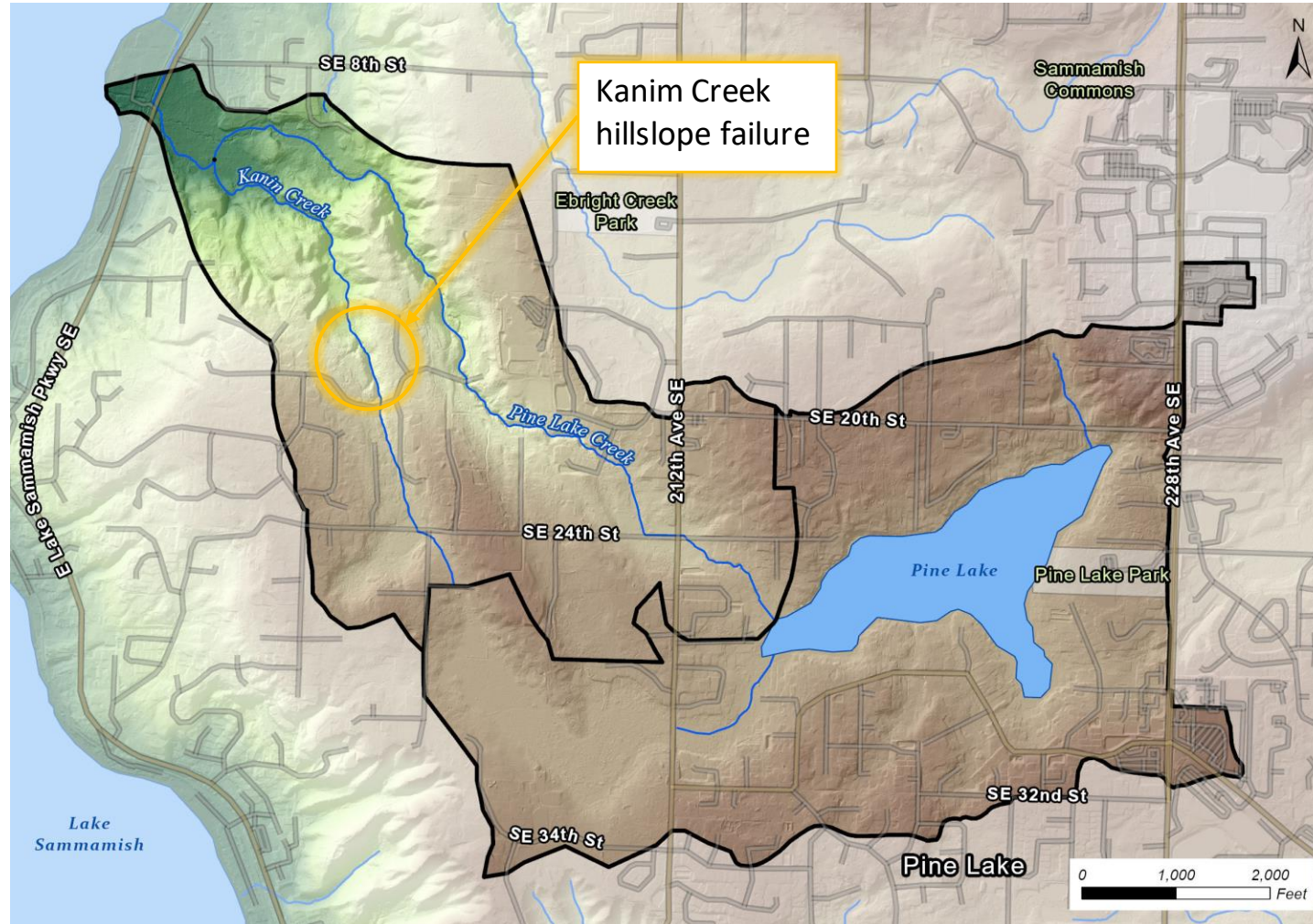
NHC, 2023



48 North, 2023

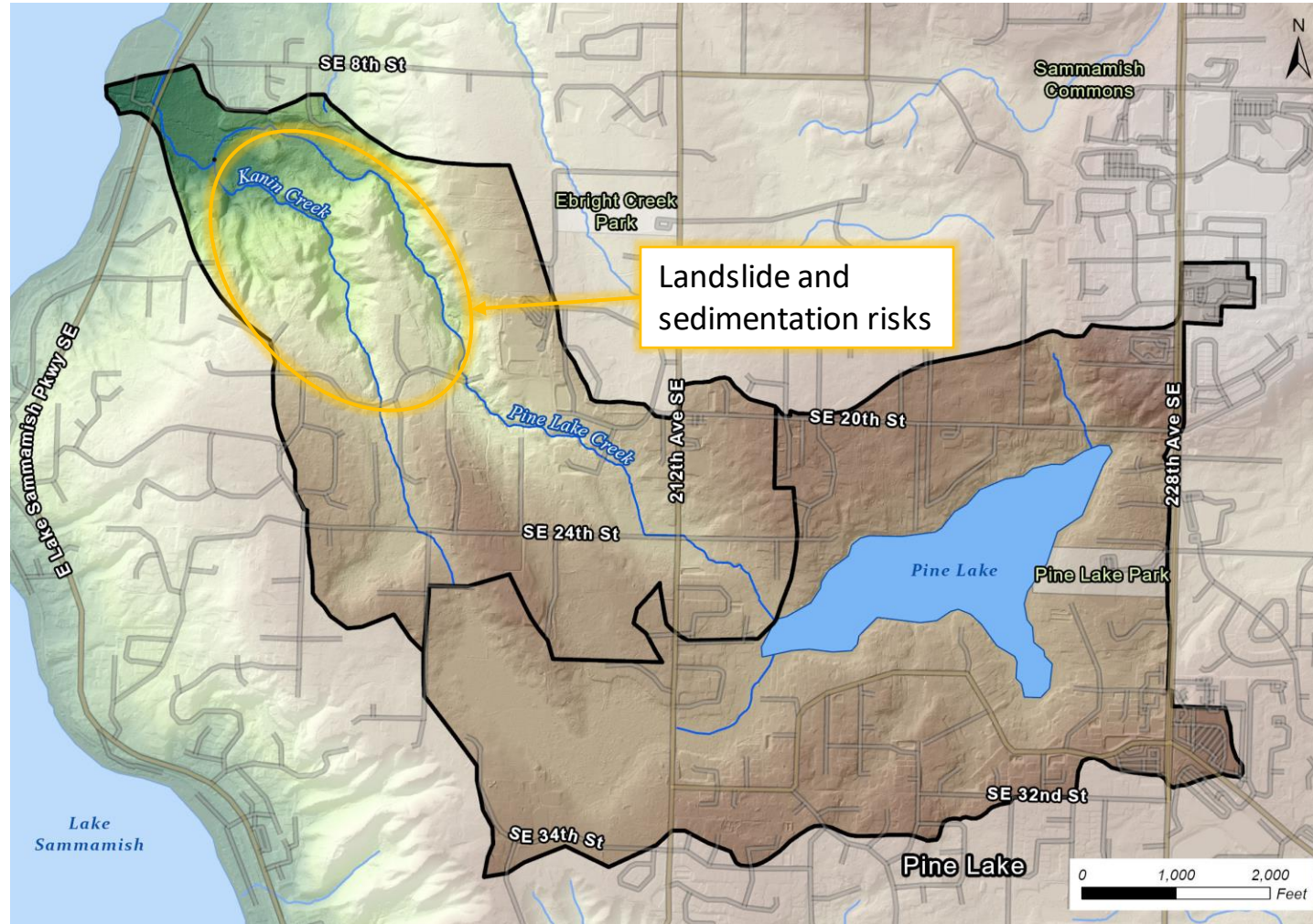


# Stream Problem Areas





# Stream Problem Areas



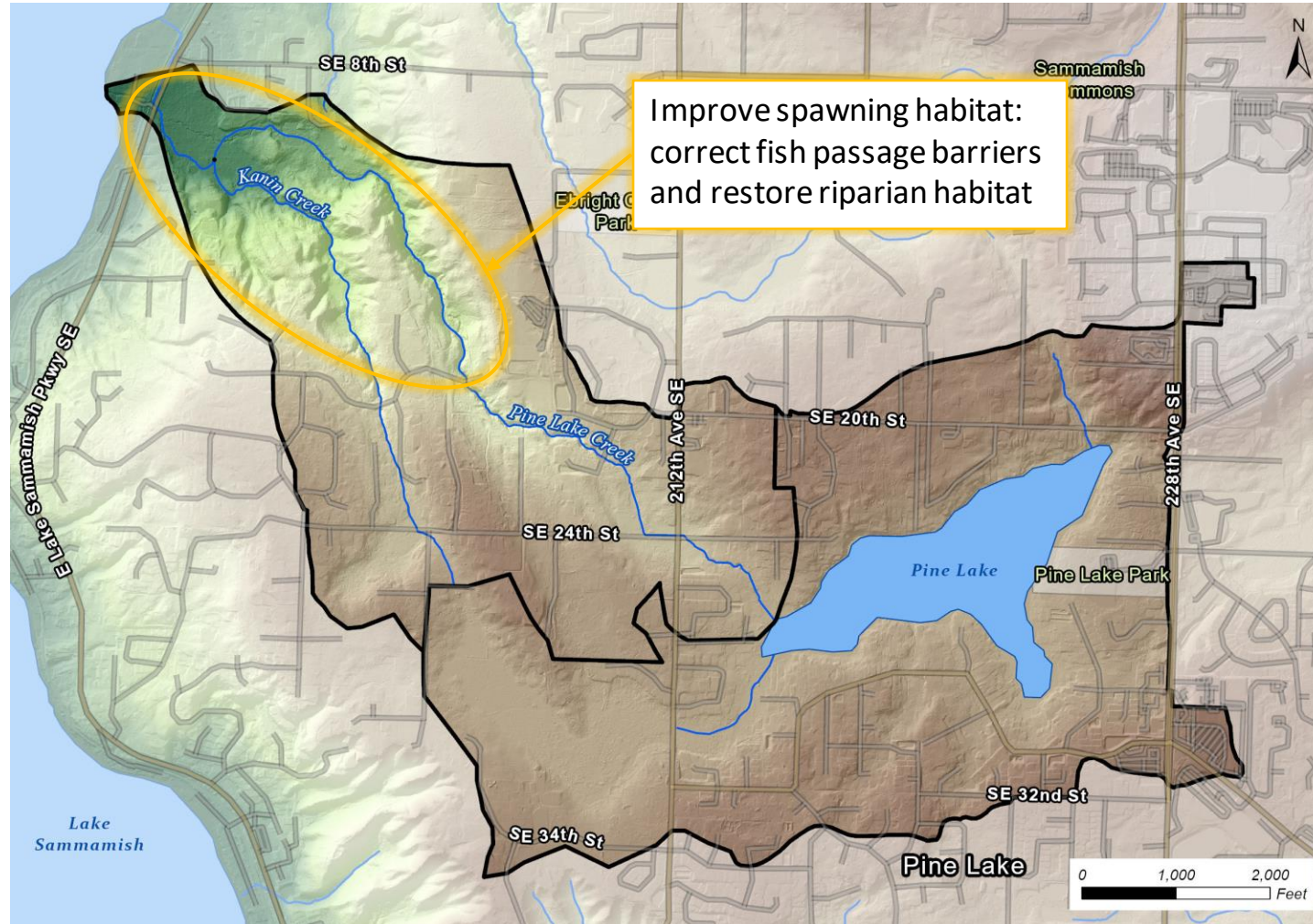
AltaTerra, 2019



48 North, 2022



# Stream Problem Areas



NHC, 2023



WDFW, 2012

# Schedule

## **March - December 2023**

Basin Assessment & Data Collection

## **April - July 2023**

Hydrologic Modeling

## **July 2023**

Lake and Basin/Stream Stakeholder Group Session #1

## **September 2023**

Open House #1

## **September 2023 - February 2024**

Identify Projects & Strategies

## **November 2023**

Lake and Basin/Stream Stakeholder Group Session #2


## **January 2024**

Open House #2

## **March - July 2024**

Prepare Basin Report

# Staying Involved

- Website:  
<https://www.sammamish.us/government/public-works/stormwater/storm-and-surface-water-projects/>  
(placeholder)
- StoryMap: [Sammamish Pine Lake Creek Basin Plan \(arcgis.com\)](#) 
- Postcards
- Public Meetings
  - September 2023
  - January 2024
- Social media



# Next Steps

- Summer 2023: Compile and prioritize problem areas
- September 2023: Hold first public meeting
- Fall 2023 – Early 2024: Identify projects and strategies to address problems
- Spring – Fall 2024: Develop outlines and concepts for priority projects
- Fall 2024: Draft Basin Plan
- Final adoption by end of 2024