



Pine Lake Creek Basin Plan

Thursday,
December 7, 2023

Lake Stakeholder
Discussion



Agenda

- Welcome and Introductions – 15 minutes
- Meeting and Basin Plan Overview – 15 minutes
- Potential Solutions – 20 minutes
- Discussion/Questions – 35 minutes
- Wrap-up and Next Steps – 5 minutes

Ground rules

1. I will do my best to keep an open mind
2. I will listen to what others have to say and do my best to understand
3. I will focus on the group discussion and avoid side conversations
4. I will let others participate
5. I will treat others with respect
6. I will think before speaking
7. It's ok to disagree, but I will do my best to find common ground
8. I will stay on topic
9. I will explore interests, not positions
10. I will tackle the topic, not the person

Basin Overview

Background

- Pine Lake Creek drains approximately 1,200 acres near the south end of the Sammamish Plateau.
- The Pine Lake Creek Basin has some of the highest resource value in the City of Sammamish. The basin includes Pine Lake, Kanim and Pine Lake creeks, and a sphagnum bog complex and several smaller wetlands.
- The basin contains some of largest remaining areas of contiguous forest within the city and Pine Lake Creek historically supported a substantial kokanee run and is still considered one of four primary spawning streams within the city.

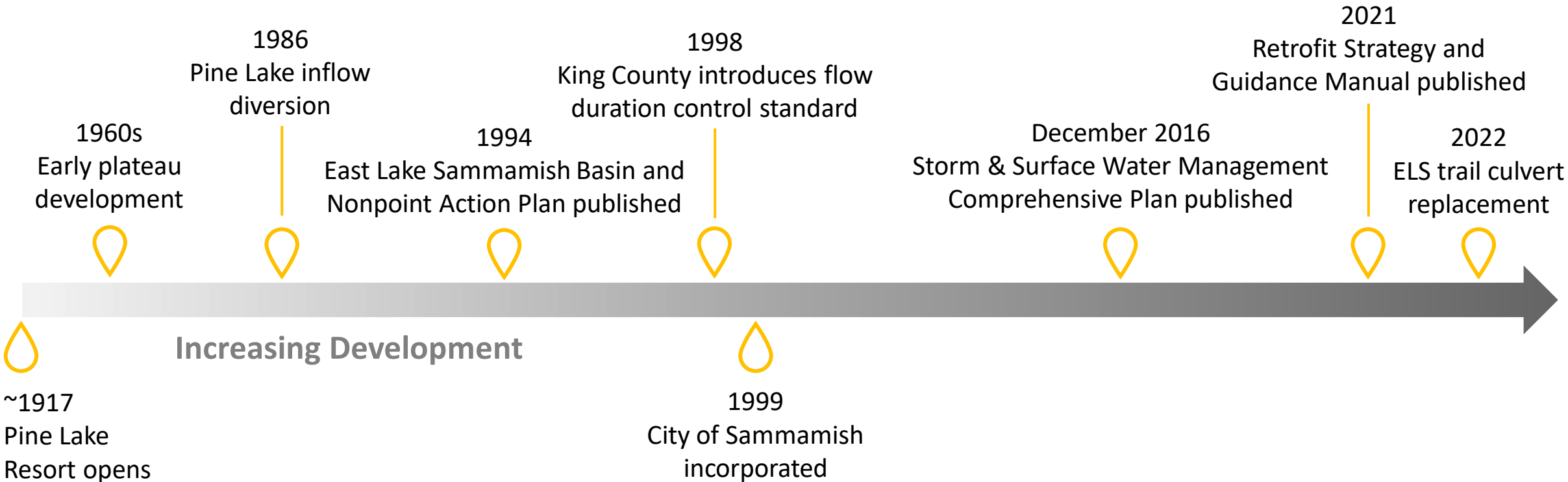
Why is the city developing a plan?

- Pursue resource protection to ensure long-term health of the lake and basin consistent with the Stormwater Comprehensive Plan.
- Ongoing development within the basin has affected historical kokanee runs, and the basin has experienced reduced water quality, flooding, and erosion.
- Despite this, Pine Lake Creek, is one of the area's four primary kokanee spawning streams and contains some of the largest remaining areas of contiguous forests within Sammamish.

Sources of Data Gathering and Information

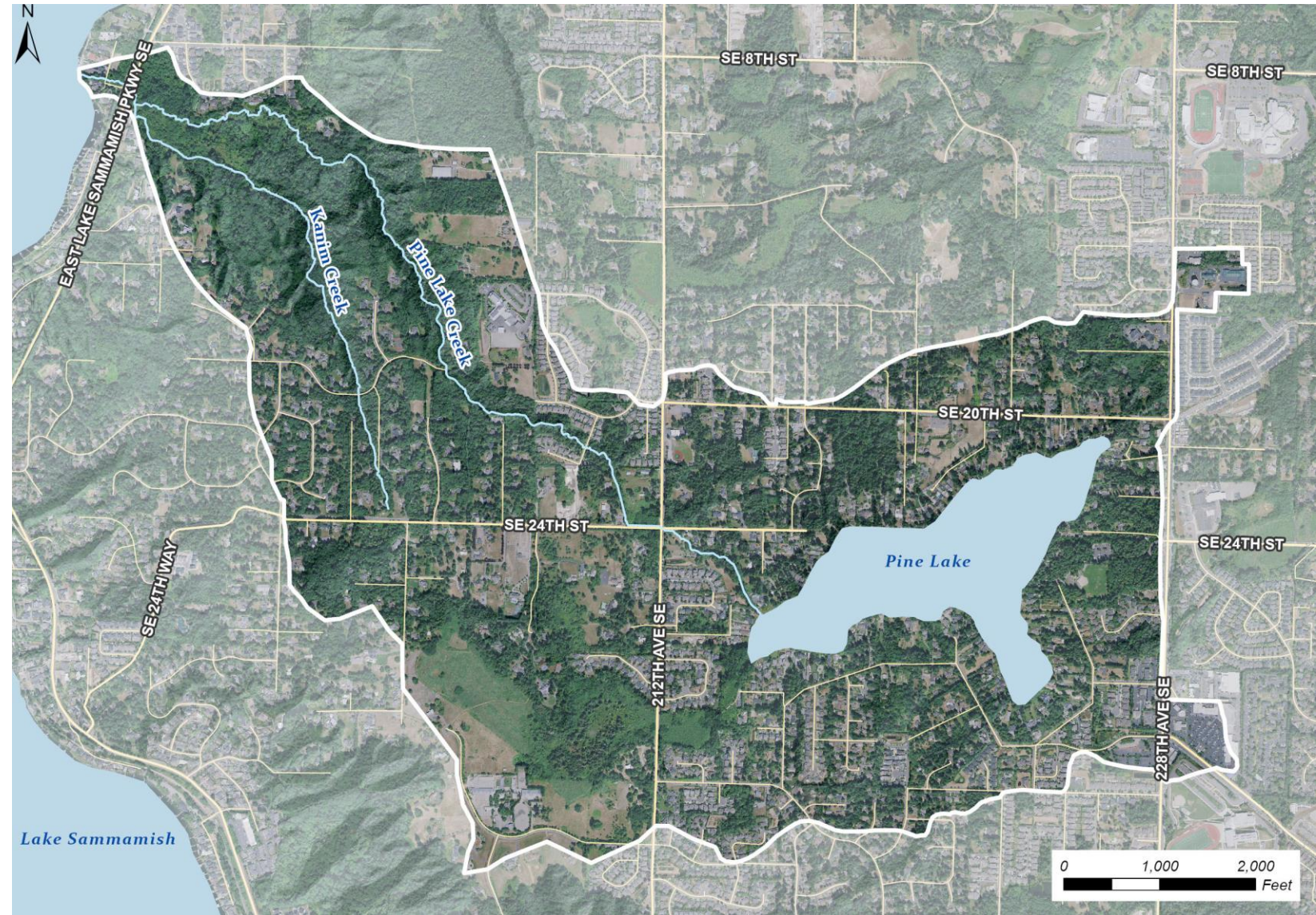
- 📍 Review of previous plans, documentation
- 📍 Stream walks and field observations
- 📍 Interviews with City staff
- 📍 Input from Stakeholder Meetings (July 2023)
- 📍 Input from Open House (September 2023)
- 📍 Desktop modeling and analysis

Pine Lake Basin Stormwater Timeline



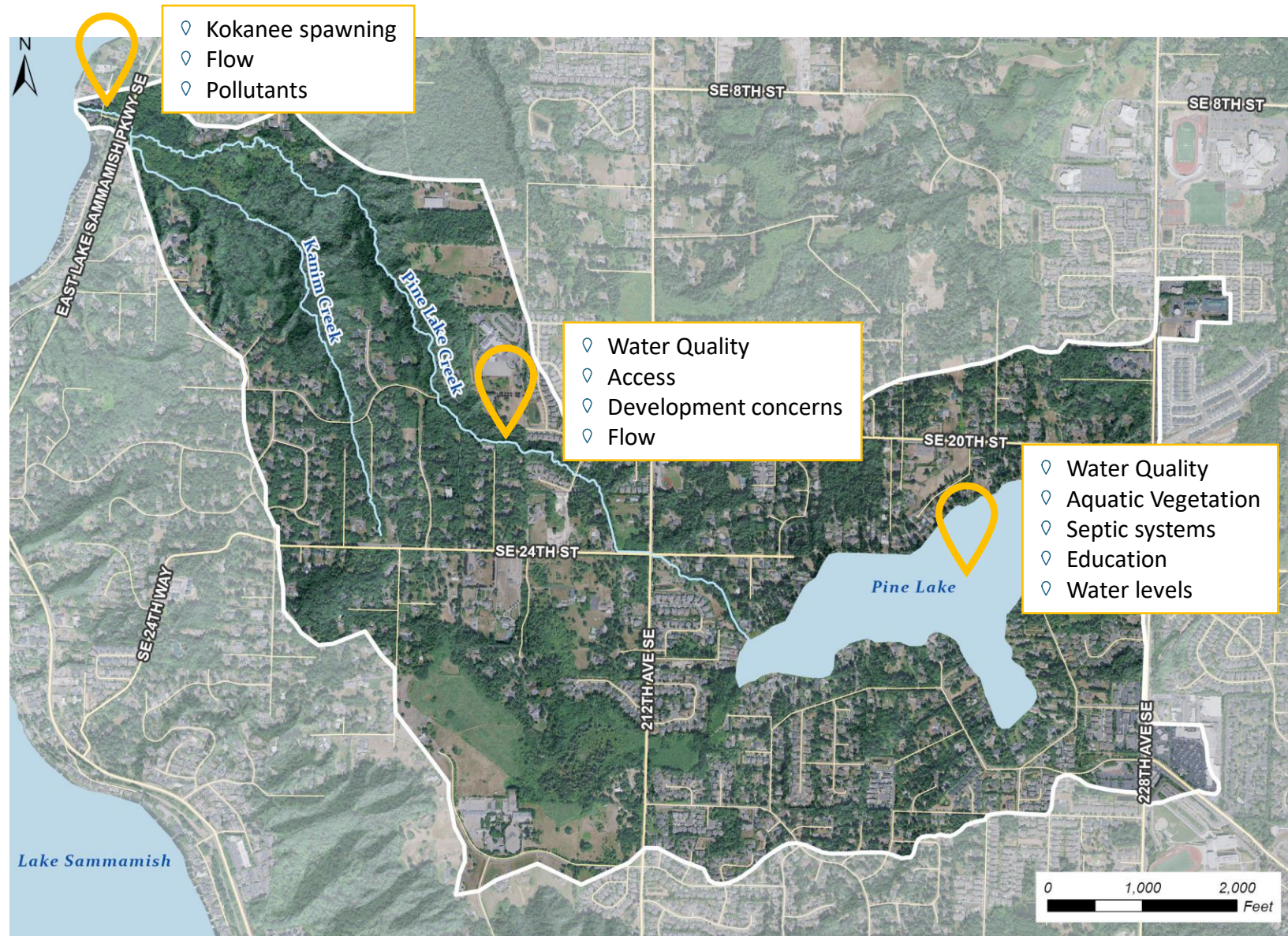
What's Working

- 📍 Stream corridors are largely forested
- 📍 Large wetlands attenuate flow
- 📍 Stormwater outfalls are generally in good condition



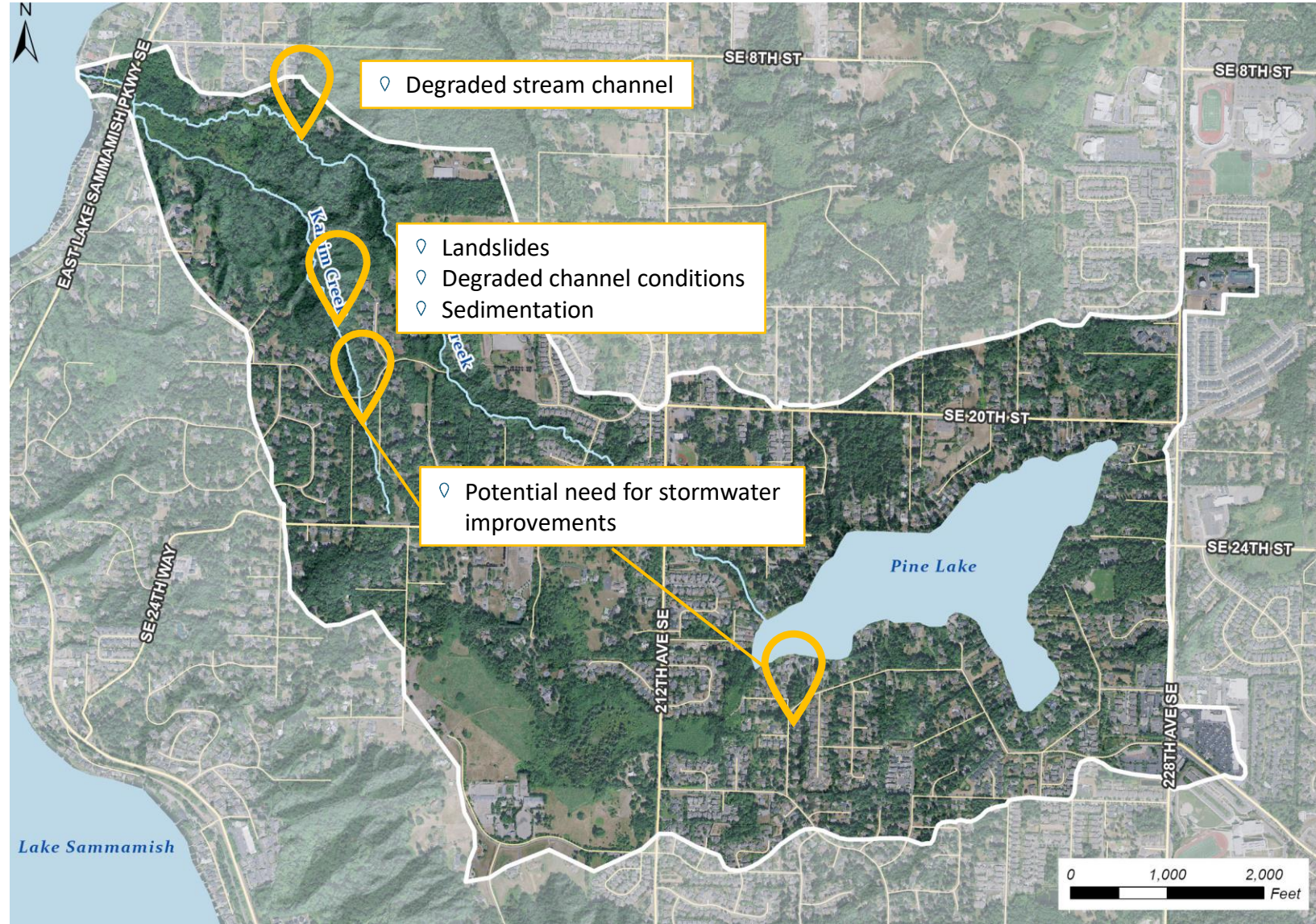
Issues we heard

- Stream concerns
 - Pollutants/water quality
 - Flow
 - Biodiversity/salmon
 - Recreational and stream monitoring access
- Lake concerns
 - Water quality/lake health
 - Invasive species/aquatic vegetation management
 - Variable water levels
 - Fishing resources
 - Septic systems
 - Need for education
- Development concerns
 - Stormwater management and care of facilities
 - Impervious surfaces



Issues we observed

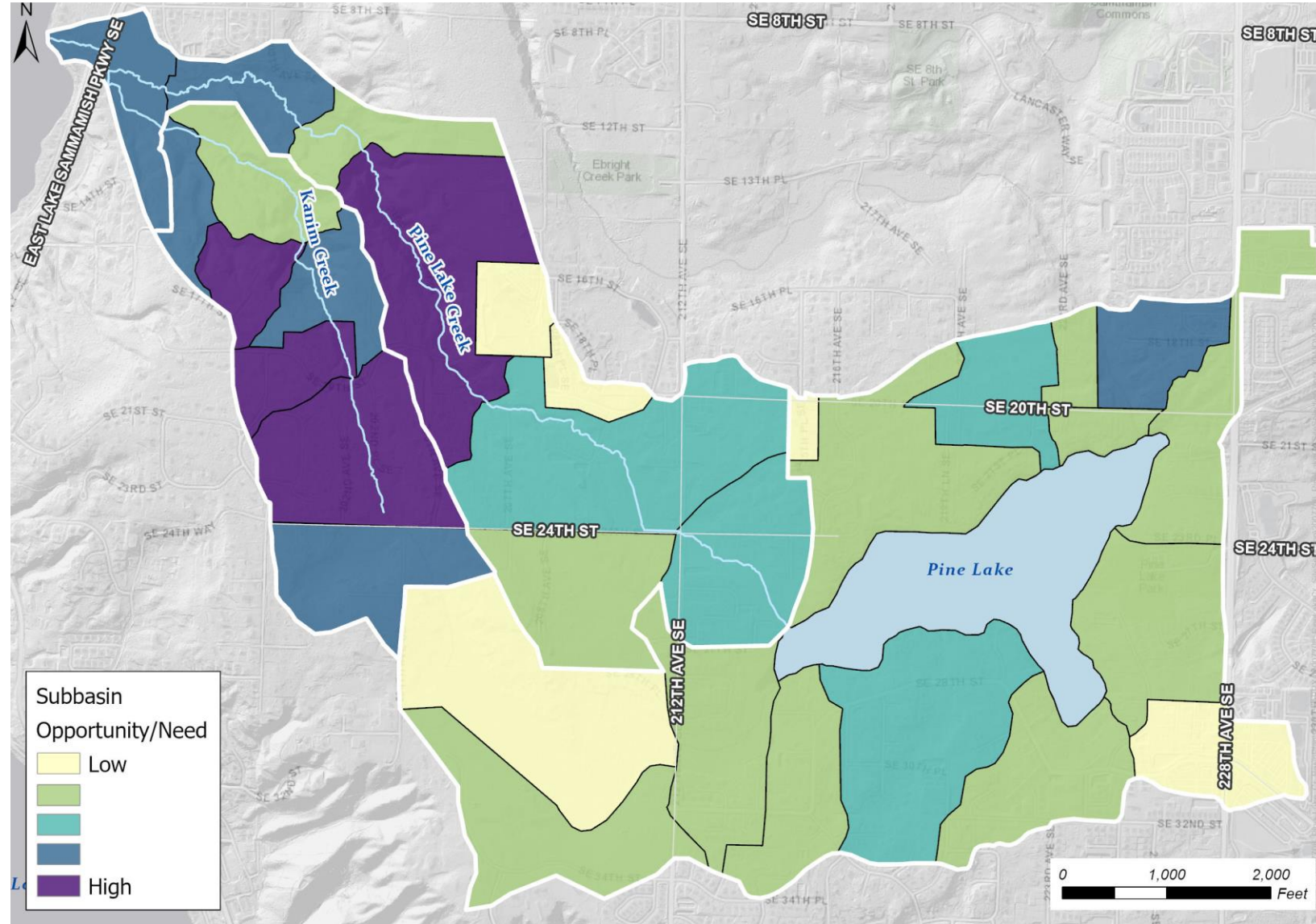
- Stream concerns
 - Landslides and sedimentation in Kanim Creek
 - Degraded stream channel (Pine Lake Creek) upstream of East Lake Sammamish Parkway that could potentially be Kokanee habitat
 - Fish passage barriers requiring replacement
- Basin concerns
 - Lack of modern stormwater facilities in upland locations draining to Kanim Creek that could contribute to greater landslide activity



Potential Solutions

Desktop Screening

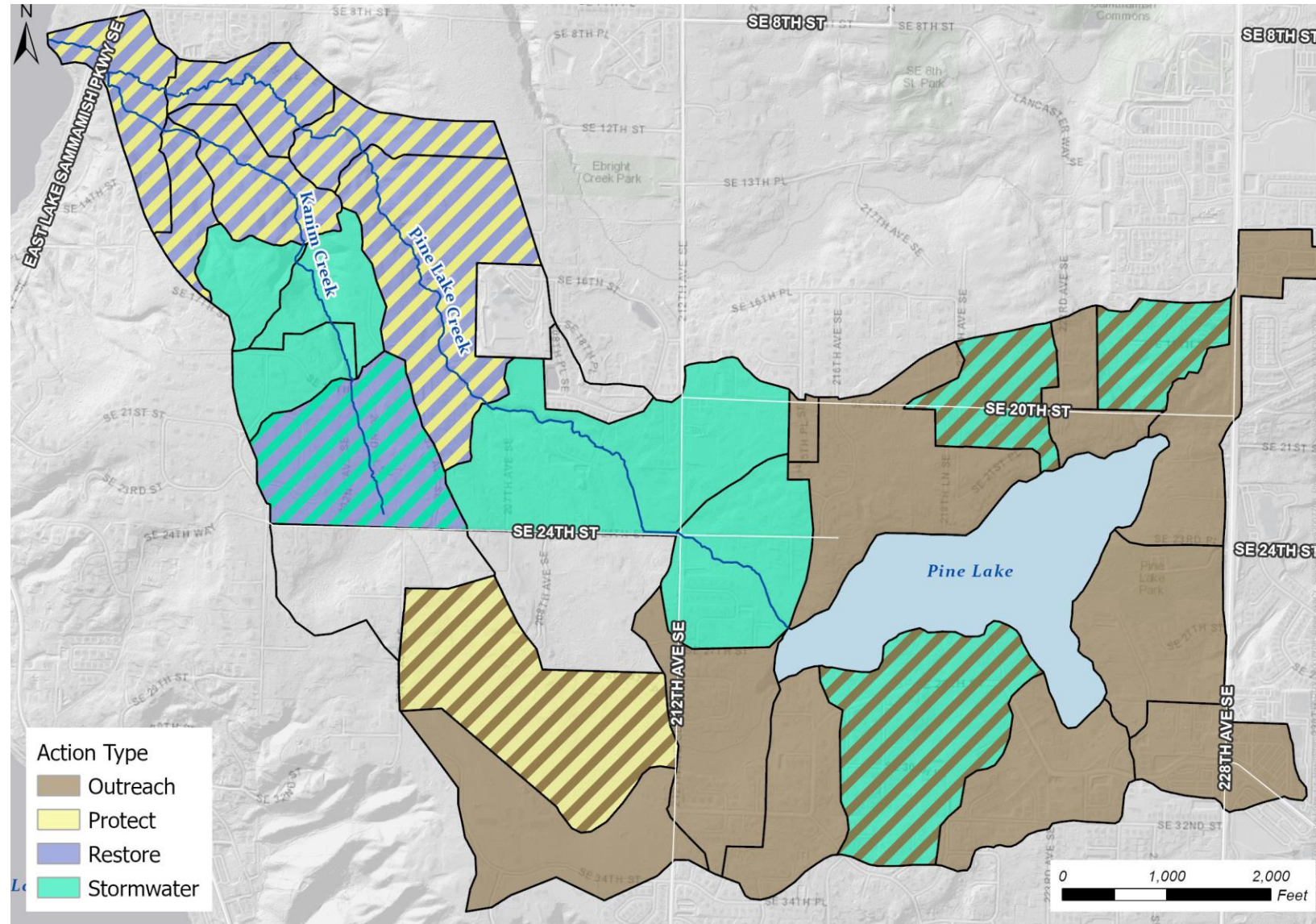
- GIS utilized to determine areas with the most opportunity and/or need
- Screening criteria
 - Stream presence
 - Wetland presence
 - Outfall locations
 - Fish barrier locations
 - Land use composition
 - Level of stormwater treatment



Types of Solutions

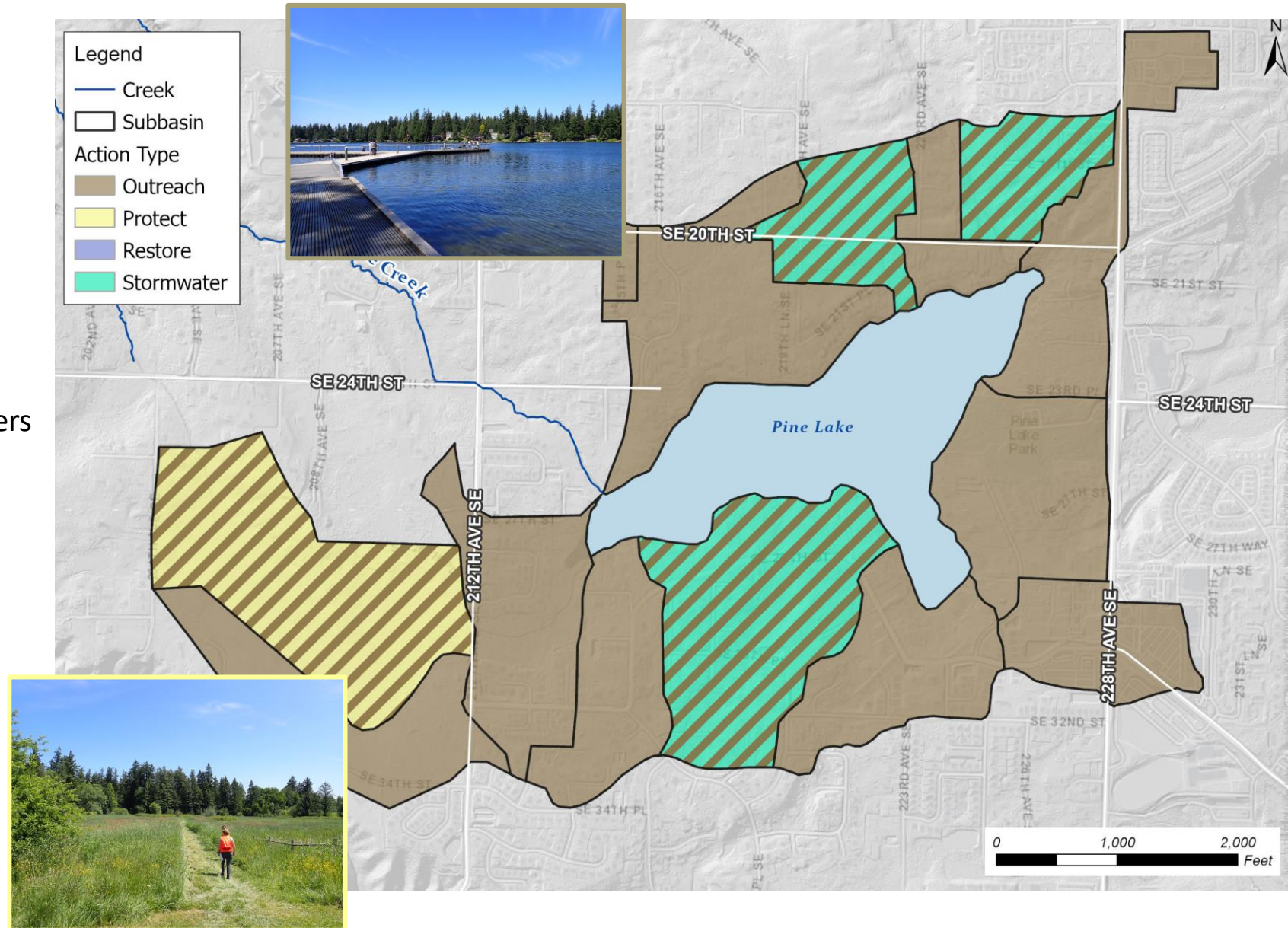
📍 Potential categories of projects and programs

- 📍 Education and Outreach
- 📍 Protection and Preservation
- 📍 Stream Restoration
- 📍 Stormwater Retrofits



Potential Lake Actions

- 📍 Educational resources for lake homeowners
 - 📍 How to guides for various home and waterfront maintenance activities
 - 📍 Workshops tailored to lake homeowners that focus on issues of concern (i.e., removal of invasive aquatics, landscaping, etc.)
- 📍 Septic conversions (incentive programs)
- 📍 Lake restoration and maintenance
 - 📍 Sediment management
- 📍 Lake management district



Discussion/Questions

- What's your overall reaction to the potential solutions presented?
- Are there other types of actions you think should be considered?
- Other input?

Next Steps

- Early 2024: Develop outlines and concepts for specific projects and programs
- Spring 2024: Prioritize projects for Basin Plan
- Summer – Fall 2024: Draft Basin Plan
- Final adoption by end of 2024

Schedule

March - December 2023

- ✓ Basin Assessment & Data Collection

April - July 2023

- ✓ Hydrologic Modeling

July 2023

- ✓ Lake and Basin/Stream Stakeholder Group Session #1

September 2023

- ✓ Open House #1

September 2023 - February 2024

- ✓ Identify Projects & Strategies

December 2023

- ✓ Lake and Basin/Stream Stakeholder Group Session #2

March 2024

Open House #2

March - July 2024

Prepare Basin Report

Staying Involved

- Website: [Pine Lake Creek Basin Plan | City of Sammamish](#)
- Postcards
- Public Meetings
 - Early 2024
- Social media

Thank you!