



NEWSLETTER

The official publication of the City of Sammamish

**NEW MAYOR, DEPUTY
MAYOR SELECTED**

**NOVEMBER WIND
STORM UPDATE**

**FISCAL SUSTAINABILITY
UPDATE**

February 2025

Sammamish City Council



Karen Howe
Mayor



Amy Lam
Deputy Mayor



Roisin O'Farrell
Councilmember



Kali Clark
Councilmember



Kent Treen
Councilmember



Pamela Stuart
Councilmember



Sid Gupta
Councilmember

Council Meetings

Regular council meetings are held on the first Tuesday and third Tuesday of each month at 6:30 p.m., with a study session on the second Tuesday at 6:30 p.m. For more information, go to sammamish.us/citycouncil.

To contact the Sammamish City Council, email citycouncil@sammamish.us.

Coffee with Council

Join us for a cup of coffee and conversation. Coffee with Council happens the first Saturday of every month with rotating councilmember attendance. Meet them at 9:30 a.m. at Metropolitan Market in Sammamish. The councilmembers may be in the outdoor seating area depending on the weather conditions. Otherwise, you will find them in the upstairs seating area near the café. We hope to see you there!

coffee w/council



First Saturday of Every Month
9:30 a.m.
Metropolitan Market



Karen Howe
Mayor

New Mayor, Deputy Mayor selected by Council

Councilmember Karen Howe will now serve Sammamish as Mayor and Councilmember Amy Lam has stepped back into the role of Deputy Mayor after a unanimous vote at the Council meeting Jan. 7.

“It is an honor to serve the City of Sammamish as Mayor,” Howe said. “I want to thank Councilmember Kali Clark for her service, she was a voice of reason and calmness when we needed it most. I look forward to helping guide the City as we navigate a new year.”

Kali Clark stepped down as Mayor to complete law school but continues to serve on Council. Lam previously served as Deputy Mayor from 2022 to 2024.

“I am happy to return to the Deputy Mayor role and serve the City,” Lam said. “I am prepared to support the Mayor and Council as we focus our efforts on revenue resources, our sustainability goals, the Town Center, and more.”



Amy Lam
Deputy Mayor

Sammamish Youth Board Applications Open



The Sammamish Youth Board is a City Advisory Board composed of middle and high school students residing in Sammamish. The City values the unique perspectives and contributions of its youth and relies on the members to address the issues, concerns, and needs of young people in our community.

Youth Board members take the lead in organizing community service projects, volunteering at City events, and initiating other projects. Serving on the board offers students a meaningful opportunity to earn volunteer hours, develop leadership skills, and gain hands-on experience in local government.

Applications are open now for the next service year, which will begin in September 2025 and run through August 2026.

Find more information and the application online at www.sammamish.us/government/commissions/youth-board.

Contact staff liaison Janie Walzer (jwalzer@sammamish.us) with any questions.



A Sustainable Start to the New Year

As we step into 2025, it's the perfect time to embrace new routines that not only improve daily lives but also help protect the beautiful City we call home. Here are five easy actions you can begin today:

- 1. Stay Active with Cleaner Transportation:** Walk, bike, or take public transit when feasible to reduce your carbon footprint and boost your health. Consider carpooling as another sustainable option.
- 2. Reduce, Reuse, Recycle:** Recycle properly, compost when possible, and avoid single-use plastics.
- 3. Practice Mindfulness:** Be mindful of water usage, reduce consumption, and look for ways to reuse and repurpose items in your daily life.
- 4. Cut Energy Waste:** Turn off lights when you leave a room, unplug electronics, and opt for energy-efficient appliances to save both energy and money.
- 5. Support Local:** Shop at local farmers' markets and small businesses to strengthen our community and reduce the environmental impact of shipping.

Small changes add up! By including these simple practices in your routine, you're helping create a more sustainable and thriving Sammamish for everyone.

For more sustainability tips, check out the Sustainable Sammamish Guide. Reduce your personal emissions and make a positive impact on the environment. Sammamish.us/Sustainability.

Energy Smart Eastside: Heat Pumps Cool Incentives Workshop

March 26, 2025

6:30-8 p.m.

Sammamish City Hall

801 228th Ave. SE,
Sammamish, WA 98075

Have you thought about improving your home's energy efficiency? Want to learn more about heat pumps? Join your neighbors for a workshop to learn about the benefits of heat pumps, different heat pump configurations, how to shop for a heat pump, and how to take advantage of rebates and incentives.

Attendees will have access to a contractor discount through AirGanic and the ability to qualify for the Energy Smart Eastside Fuel Switch rebate at the event.

Learn more and register at: energysmarteastside.org



Fiscal Sustainability Update

In 2022, the City of Sammamish identified a structural imbalance in the City of Sammamish's financial forecast. Expenses have been outpacing revenues and the City is currently using ending fund balances (the City's savings account) to fund ongoing services. This is neither sustainable nor a municipal best practice, and the City must make near-term changes to its budget.

In 2023, the City convened a Fiscal Sustainability Taskforce, made up of community members, to review the fiscal situation and make recommendations to the City Manager. This group unanimously affirmed the City's structural imbalance, the community's desire to maintain current levels of City services and provided the following fiscal recommendations:

- Reduce the City's budget by \$1 million in 2024 to lower the overall growth of City expenditures moving forward.
- Implement a 6% utility tax on all Sammamish utilities.
- Consider a voter-approved Metropolitan Parks District in the coming years.

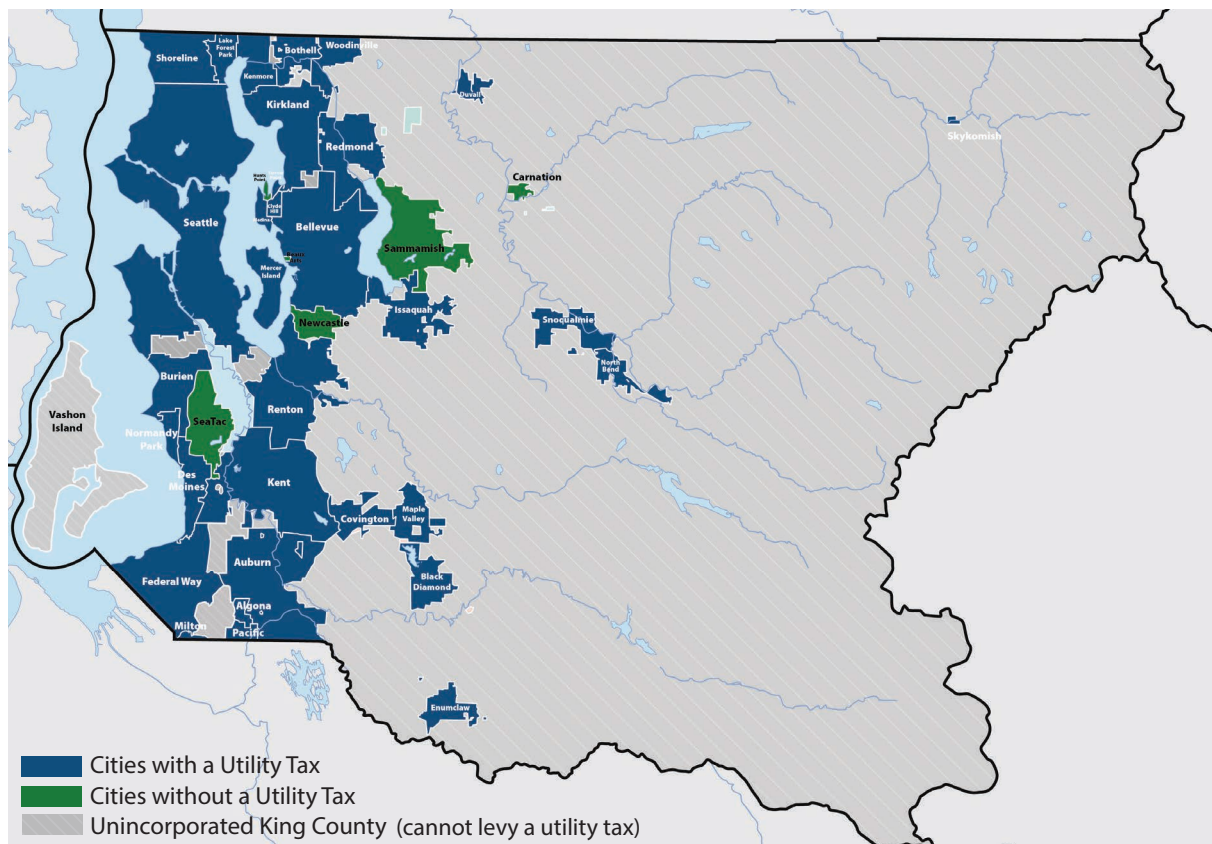
The City exceeded the Taskforce's reductions recommendations, identifying \$2.45 million in reduction in 2024. In addition, during the creation of the 2025/2026 budget, the City kept budget increases to a minimum, increasing this biennial budget only .7% over the previous biennial budget, even though key expenses such as personnel and services increased significantly due to inflation. Even with these reductions and limits to increases, the City is unable to maintain levels of services with existing revenues.

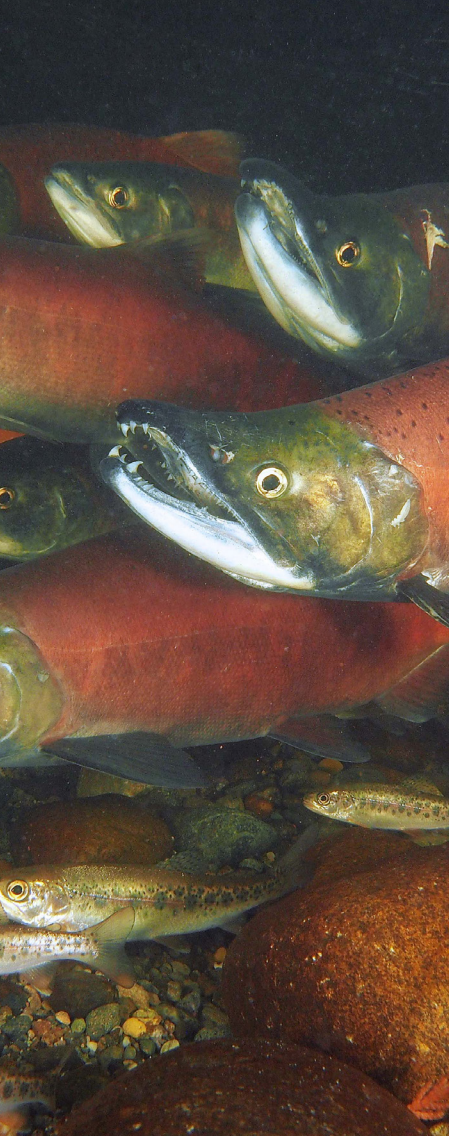
The discussion of the utility tax has been a part of the City's fiscal and budget deliberations since 2023. As a part of the adoption of the 2025-2026 biennial budget, the City Council directed staff to initiate the process for the development of a utility tax. This effort is currently underway. The Council reviewed options at its 2025 retreat in early February and is expected to deliberate on the potential new revenue source during the February and March meetings, with potential action in late March. For more information on upcoming Council Meetings and agendas, visit Sammamish.wa.civicweb.net/portal and navigate to upcoming meeting agendas.

The City takes its fiscal responsibility seriously, and understands the seriousness of levying additional taxes. However, we also understand the community's desire to maintain levels of service for valued services and programs not legally nor functionally required by a City.

Sammamish is one of only six cities within King County that does not currently levy a utility tax. The reality of the City's fiscal situation is that it is time now to implement a tool used by most of our neighboring cities for many years.

The City welcomes the community's involvement in these ongoing discussions and deliberations.





Sammamish sees record Kokanee returns

As a member community of the Lake Sammamish Kokanee Work Group, Sammamish has long supported regional efforts to improve the native Kokanee salmon population in Lake Sammamish. Kokanee move from streams before spending three or four years in Lake Sammamish. The adult fish then return in late autumn to spawn in the streams where they were born.

Official counts from this year's kokanee returns indicate the highest levels in almost 10 years—over 8,000 fish. For comparison, returns have averaged fewer than 400 fish over the past eight years.

Much of the success within Sammamish can be linked to improved access to spawning habitat in local streams including Ebright Creek and Zackuse Creek. In recent years, Sammamish Public Works replaced culverts where these streams crossed East Lake Sammamish Parkway. Removing these barriers opened critical upstream spawning habitat to returning fish.

An equally critical part of the kokanee success involves the countless hours Sammamish residents volunteer toward the Kokanee Work Group, Trout Unlimited, Snoqualmie Tribe and other organizations. Individuals participate in fish counts, assist remotely located egg incubators, help with the release of hatchery fry, and participate in various restoration programs throughout the Lake Sammamish watershed.

Learn more about the Private Stormwater System Inspection Program

The City's private stormwater system inspection program started before Sammamish became a city. King County inspected privately-owned stormwater systems on the city's behalf until the city hired staff in 2010 to perform these inspections.

The program verifies the long-term operation and maintenance of private stormwater treatment systems to comply with local requirements. Staff inspect nearly 200 privately-owned systems every year.

Stormwater systems collect stormwater runoff before it flows into our streams and lakes. Private stormwater systems often include features such as stormwater ponds, swales, ditches, pipes, and catch basins to capture, convey, and treat stormwater, reducing flooding and improving water quality.

Property owners must operate and maintain their stormwater system. Failing to maintain their stormwater system could result in penalties.

For more information on these requirements, please visit sammamish.us/npdes-stormwater-permit. You can also reach out to the Stormwater Division by email stormwateradmin@sammamish.us.

Dont miss our 2025 Parks events!

It's a new year and our Parks & Recreation crew have some amazing events planned. We are still working on 2025 programming but have a few events solidified!



Earth Day

Saturday, April 19
11 a.m. - 2 p.m.
Beaver Lake Park



Rig-A-Palooza

Saturday, May 17
11 a.m. - 2 p.m.
City Hall Plaza



Fairy House Trail

June - September



Fourth on the Plateau

Friday, July 4
5 p.m. - 10 p.m.
Upper and Lower Commons Park



Kids First Events

July 15 - Aug. 12
Tues., 1-2 p.m.
City Hall Plaza



Concerts in the Park

July 17 - Aug. 14
Thurs., 6:30 p.m.-8 p.m.
Pine Lake Park

For more information check out our website and social media platforms.

If you would like to volunteer with the City, please visit: sammamish.galaxydigital.com/need

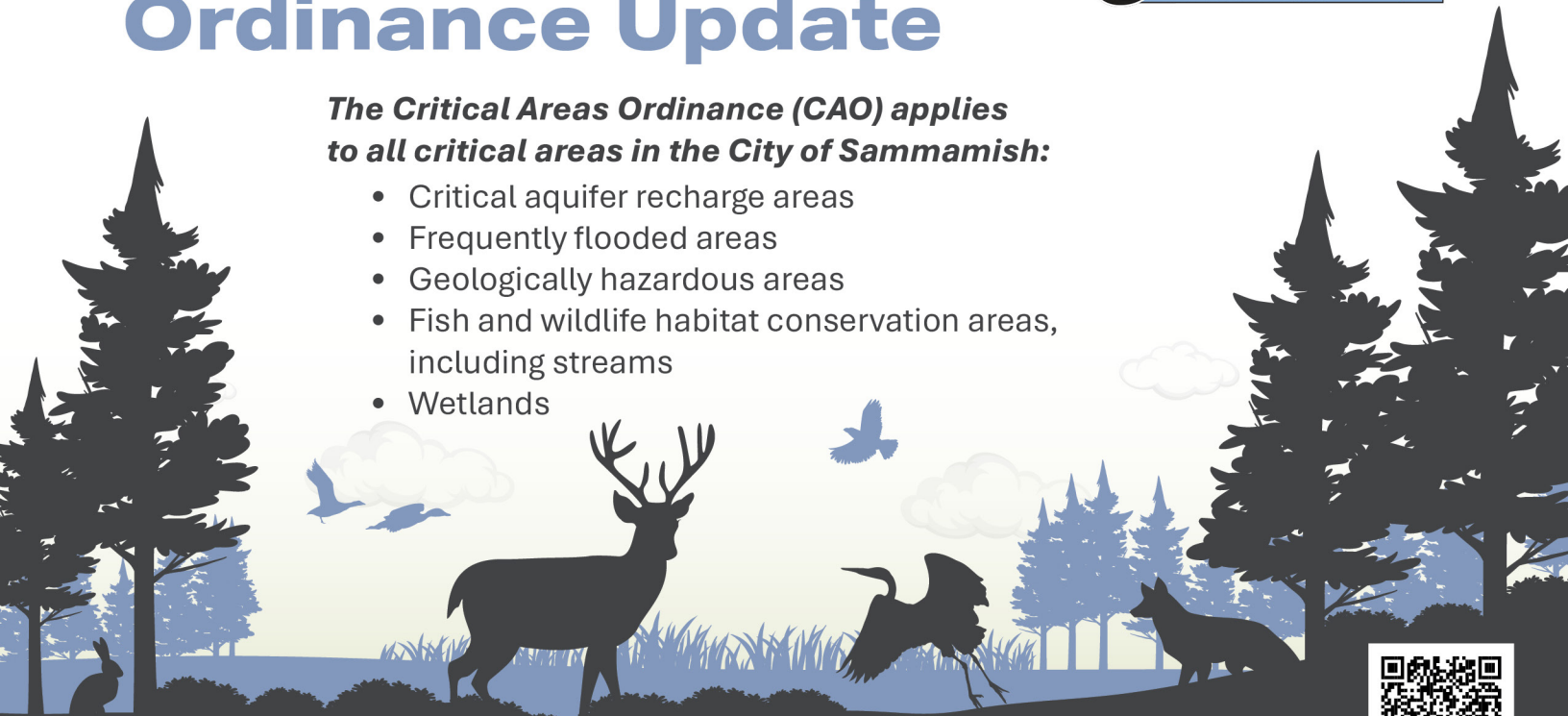
CITY OF SAMMAMISH

Critical Areas Ordinance Update



The Critical Areas Ordinance (CAO) applies to all critical areas in the City of Sammamish:

- Critical aquifer recharge areas
- Frequently flooded areas
- Geologically hazardous areas
- Fish and wildlife habitat conservation areas, including streams
- Wetlands



New code effective January 1, 2025

To learn more about the updates to the critical areas protections, please use the QR code:





Public Works Projects 2025

The City will be working on quite a few projects in 2025 that will improve roadways, assist with fish passage and so much more. Not all of the upcoming projects have websites, so stay tuned.



Louis Thompson

The improvements on Louis Thompson Road from 210th Place Southeast to Eastlake Sammamish Parkway Northeast will upgrade the existing stormwater conveyance, culvert, and ditch systems in the area and alleviate the flooding, erosion, and landslide issues while providing stormwater treatment. In addition, the project adds a sidewalk and a bike lane on the north (downhill) side of the road to provide more non-motorized connectivity to the community.

To learn more:

sammamish.us/projects/louis-thompson-tightline

East Lake Sammamish

East Lake Sammamish Parkway is located along the eastern shore of Lake Sammamish and extends between SR-202 to the north and I-90 to the south. Significant and ongoing surface settlement and cracking has been observed. The goal of this project is to evaluate two design options for repairing the embankment, determine the best value concept for future design and construction, and to complete a 30 percent design of the preferred alternative.



George Davis Creek Fish Passage & Storm Improvement Project

This project will improve a stormwater culvert that continues to be a maintenance challenge. The culvert improvements also result in redirecting George Davis Creek and require the new culvert to be fish-passable. The City is designing a new fish-passable culvert under East Lake Sammamish Parkway, removing other fish passage barriers, and daylighting George Davis Creek from its mouth at Lake Sammamish to the east side of East Lake Sammamish Parkway, opening one river mile of spawning habitat to kokanee salmon.

To learn more: sammamish.us/projects/george-davis-creek-fish-passage-culvert/

Hazel Wolf Culvert Improvement Project

This project will replace an existing undersized culvert to increase flow capacity and reduce flooding on West Beaver Lake Drive.

To learn more: sammamish.us/projects/hazel-wolf-culvert-improvement-project/

212th Flood Mitigation

The 212th Avenue Southeast corridor is a critical north-south connection on the west side of the city and was established almost 100 years ago. Prior roadway improvements included the installation of gabion baskets and sidewalk along the west side of 212th Avenue in the early 2000s. The planned study evaluates options for improvements on 212th Avenue Southeast to address road stability and flooding, as it crosses Ebright Creek. The study will review opportunities for near-term (2025) improvements as well as long-term solutions for the roadway.

To learn more: sammamish.us/projects/212th-flood-study/

Bike and Pedestrian Mobility Plan

Public Works is currently developing a Bike & Pedestrian plan, which will include information about existing conditions, estimations of future conditions, provide a gap analysis, and a list of proposed projects with associated costs. A community workshop is scheduled for Feb. 26, 2025 from 6 - 7:30 p.m. in City Council Chambers with a live-stream option.

To learn more: sammamish.us/government/public-works/transportation-planning/bike-and-pedestrian-mobility-plan/

Renovations complete at Fire Station #82

Work was completed late last year on Fire Station #82, which is used by Eastside Fire & Rescue. The City contracts out fire and emergency services—there are three fire stations serving the Sammamish community. This was the first major update to the building in 35 years.

In 2018, a building analysis identified issues in the fire station that needed addressing to meet federal and local codes and regulations. The planning for these needed upgrades began in 2021 and construction was completed at the end of 2024.

The upgraded space includes an additional 900 square feet, single occupant gender-neutral sleeping quarters, a new fire sprinkler system, and a redesign of the kitchen, dining area, and other spaces. A new generator was added to help ensure power during an emergency.





City Storm Response Update

The November 2024 bomb cyclone made long-lasting impacts in the City. Crews are still working on clearing debris in 2025 and making repairs.

In our initial storm response, we diverted Parks staff to help with our Public Works Maintenance crews to clear debris from the public right of way for community safety. We even had chainsaw-certified police officers clearing debris in the aftermath. We worked with our partner agencies like King County and Eastside Fire & Rescue to coordinate efforts.

Crews worked 10-hour shifts for multiple weeks to clear debris and awaited Puget Sound Energy crews, who were required to fix power lines before city crews could clear roadways. The City hosted a community debris drop-off event on Dec. 14 to help residents remove debris that fell on private property.

City Hall operated as a warming center for nearly a week after the storm, offering people a place to charge devices, warm coffee, and a warm place to rest. Additional staff support was also provided to meet immediate needs.

We increased communication between Nov. 20 - 27 with 227 posts across social media channels, which is an increase of 393% vs pre-storm with over 264,641 views. If you do not follow the City on social media, please do. This is the most immediate way to share information quickly to a large group of people.

The City started collecting information about damage for the County, meeting the monetary threshold to apply for possible FEMA reimbursement. This process takes a long time and requires a lot of paperwork. We submitted all necessary documentation and asked for \$2,235,902 amount in reimbursement from the federal government. We have not received approval, yet.



Eastside Fire & Rescue reported over 750 emergency calls across their service area between 5–9 p.m.



We had 17 maintenance staff members working 10-hour shifts.



35 street signs were damaged along with 260+ feet of guardrail.



343 MySammamish requests were created between Nov. 19 – Dec. 5.



Staff worked evenings and the weekend for the warming center, which saw over 400 people a day.



Our crews have removed 322 regular garbage trucks worth of tree/limb debris to date.



Crews report approximately 300 trees down in parks that need to be removed.



400 feet of fence in parks were damaged.



Community Storm Debris drop-off event on Dec. 14 saw 168 cars



Eastside Fire & Rescue Emergency Preparedness Tips

The power has been off for a few days, there is no hot food, no hot coffee. The heat is off. You see downed power lines a few blocks away—with no sign of power company repair crews.

Sound familiar? As we have learned from recent storm events, everyone needs to ensure they are prepared to shelter in place for 3-5 days with their entire household in the event of another storm. It is each person's responsibility to be prepared.

Other helpful tips for emergency preparedness:

- Sign up for alerts (weather, roads, floods, earthquakes)
- Be prepared to be on your own for several days by storing food, water, flashlights, spare batteries, and other basics
- Keep yourself safe – don't go out during the height of a storm, stay off icy roads if possible, treat all downed wires as potentially live
- Look out for your neighbors
- Do not leave candles unattended
- Do not bring BBQs, grills, flame heaters, and generators into your house. Carbon monoxide is invisible, odorless, and can kill you
- Generators – do not operate indoors, in garages, or next to your house
- Safe generator use – install a transfer switch or use another safe connection to avoid backfeed and fire hazard

Questions? Contact Eastside Fire and Rescue for storm preparedness.

For more tips visit this website:
<https://bit.ly/40q6aOd>

Sign up for alerts

(Weather, roads, floods, and earthquakes)



or visit: <https://bit.ly/40q6aOd>

How to Get Information & Get Involved

Sammamish City Council Meetings

Regular city council meetings are held on the first Tuesday and third Tuesday of each month at 6:30 pm, with a study session on the second Tuesday at 6:30 pm. For agendas, minutes, and meeting videos, go to sammamish.us/citycouncil. To contact the Sammamish City Council, email citycouncil@sammamish.us.

Sammamish Planning Commission

Sammamish Planning Commission meetings are held on the first and third Thursdays of each month at 6:30 pm. For agendas, minutes, and meeting videos, go to sammamish.us/planningcommission. To contact the Sammamish Planning Commission, email planningcommission@sammamish.us.

Additional Public Meeting Information

Stay informed on city government with CivicWeb Portal. See a schedule of meetings, get meeting agendas, and view past meetings at sammamishwa.civicweb.net

Receive Email and Text Alerts

To subscribe to the City of Sammamish email updates and text alerts go to sammamish.us/subscribe.

City Newsletter

Suggestions or concerns? Contact communications@sammamish.us

Follow City of Sammamish on Social Media



Scan the QR code or visit us at www.sammamish.us

RESOURCES FOR SAMMAMISH RESIDENTS

Police/Fire Emergency 911

Police Non-Emergency (206) 296-3311

Eastside Fire & Rescue (425) 313-3200

King County Sheriff (206) 263-9133

King County Animal Control (206) 296-7387

Garbage - Republic Services (425) 646-2400

Sammamish Permit Center (425) 295-0531

Sammamish Plateau Water and Sewer (425) 392-6256

NE Sammamish Water and Sewer (425) 868-1144



City of Sammamish
801 228th Ave SE,
Sammamish, WA 98075
425-295-0500 • www.sammamish.us

PRSRT STD
U.S. Postage
PAID
Seattle, WA
Permit No. 1

ECRWSS
Postal Customer



The City of Sammamish is hiring!

Please check out our job openings at: www.governmentjobs.com/careers/sammamish and if you have any questions please contact Human Resources at hr@sammamish.us.