

J-19

LOUIS THOMPSON

NO. 1087

— COUNTY ROAD —

SURVEY NO. 1248

ORDINANCE NO. _____

FILED 2-1-1915
REFERRED TO ENGINEER 2-1-1915
ENGINEER'S REPORT FILED _____
HEARING SET FOR 8-14-1916
ESTABLISHED 8-14-1916
ENTERED ON PLAT BOOK _____
WIDTH OF RIGHT OF WAY 60'
VACATED _____

COUNCIL'S RECORD

ESTABLISHED:- VOL. 19 PG. 481
VACATED:- VOL. _____ PAGE _____

~ Louis Thompson Rd. ~
COUNTY ENGINEER'S REPORT

IN THE MATTER OF THE petition of
Louis Thompson and others } COUNTY ENGINEER'S REPORT
for the Location and Establishment of a County Road }
in King County, Washington.

I, the undersigned, County Engineer of the County of King, State of Washington, duly directed by the Board of County Commissioners of said County, on the February day of 1st 1915, to make an examination, and, if necessary, a survey of a certain road referred to in a petition relating to the improvement of that certain road above designated, and on September 4 1915 survey and mark the course of the road proposed in said petition and report as follows:

FIRST

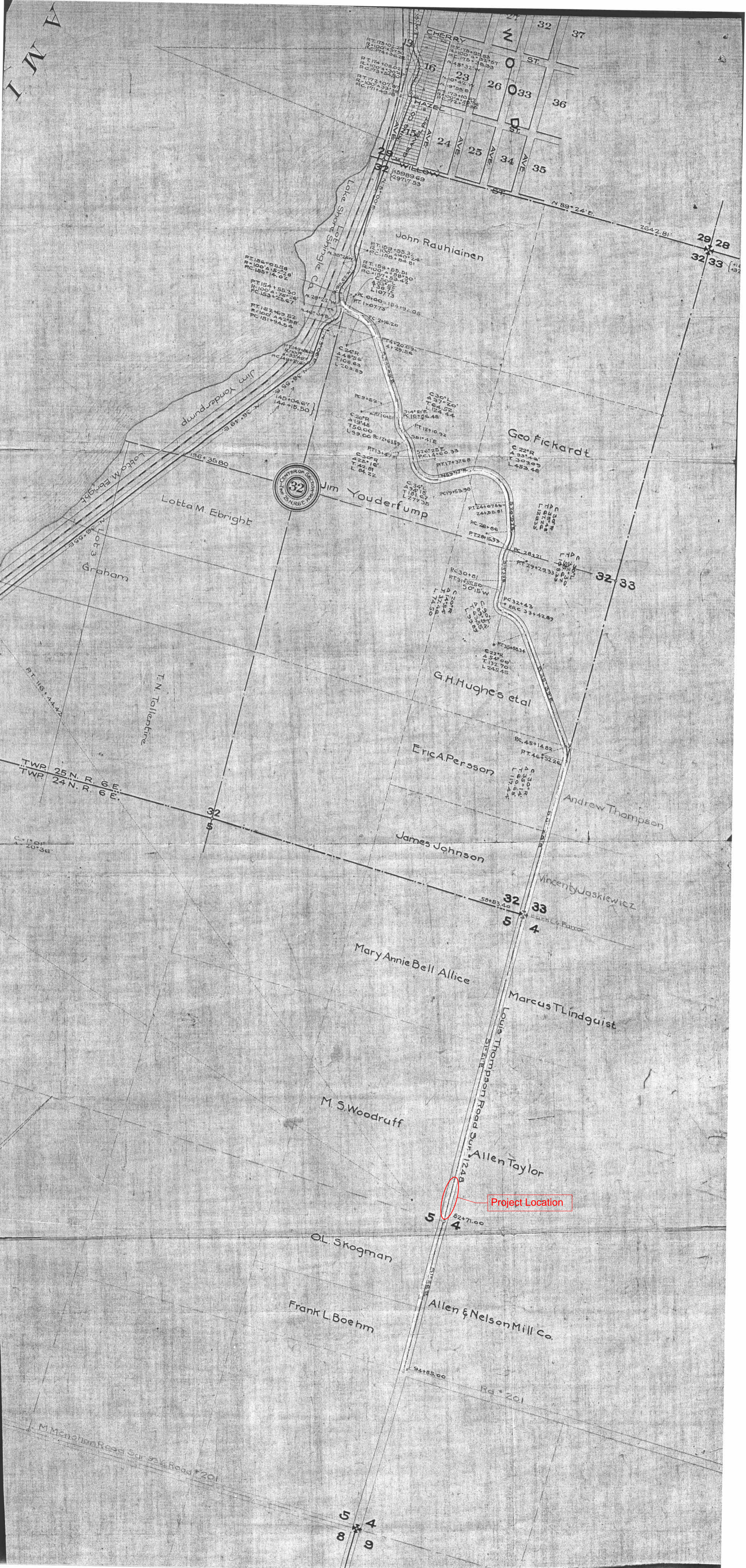
That in my opinion said Road is a necessity and ought to be established and opened.

SECOND

Said Road commences at a point in the Thos. Alexander Road known as Eng. Sta. P.O.T. 154+92.05, said point being 1050 ft. more or less southerly and 10ft. more or less westerly from the N. 1/4 cor. of Sec. 32 T. 25 N., R. 6 E. W.M. runs thence southeasterly and southerly to a connection with Road #201 at the 1/16 Cor. north of the corner common to Sec's. 4-5-8 and 9 T. 24 N., R. 6 E. W.M.

THIRD

I recommend that said Road be established not less than 60' or more than 100' feet in width.



Project Location



N
M
I

TWP 25 N. R. 6 E.
TWP 24 N. R. 6 E.

5
8
4
9

29 28
32 33

32 33

32 33

5 4

5 4

5 4

5 4

5 4

5 4

5 4

5 4

5 4

5 4

5 4

5 4

5 4

5 4

5 4

5 4

5 4

5 4

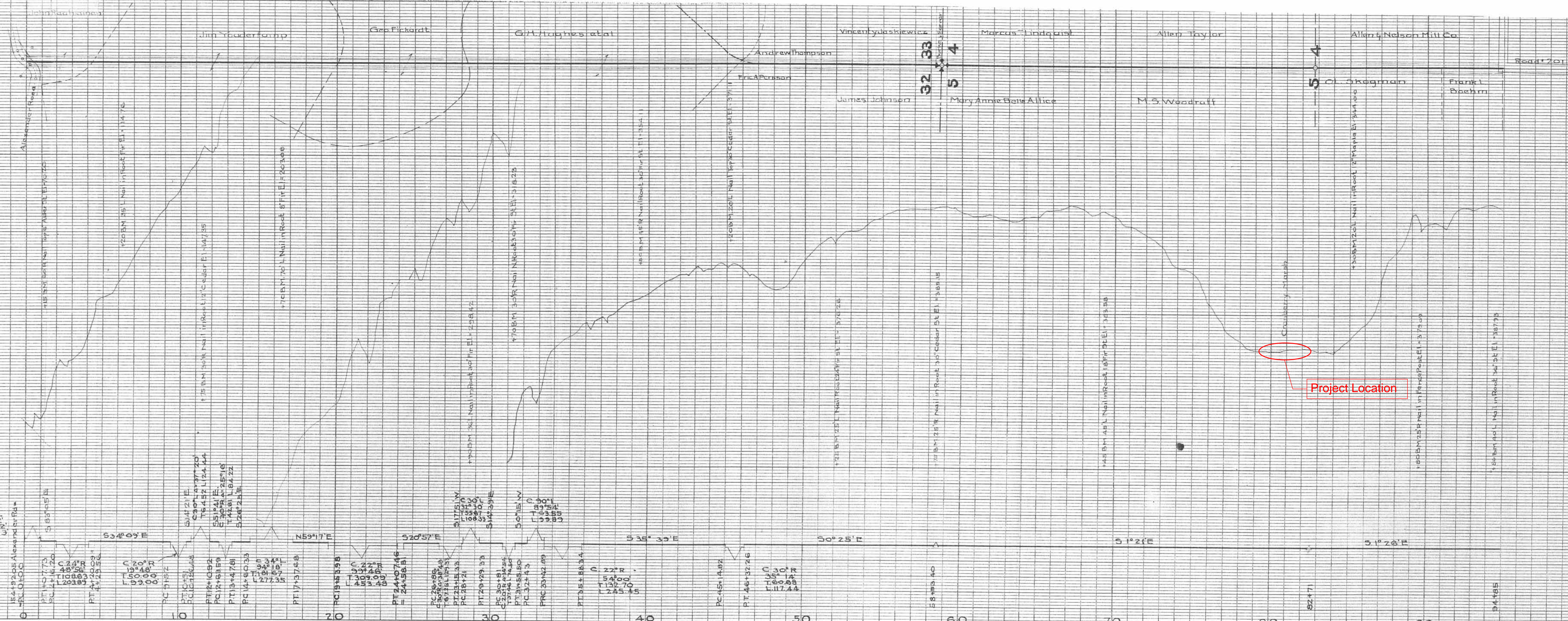
5 4

5 4

5 4

5 4

THE FREDRICK POST CO.
"Profiled" PROFILE PLATE A



THE FREDRICK POST CO.
"Profiled" PROFILE PLATE A

THE FREDRICK POST CO.
"Profiled" PROFILE PLATE A

John Krauss
John Yoderkamp
Geo Fickardt
G.M. Hughes et al
Andrew Thompson
Vincenty Jaskiewicz
Marcus Lindquist
Allen Taylor
Allen G. Nelson Mill Co
Frank Baehm
Road 201

Alexander Road
1/25 BM 151 Nail in Root of Elm Elevation 114.76
1/25 BM 152 Nail in Root of Elm Elevation 114.75
1/25 BM 153 Nail in Root of Elm Elevation 114.75
1/25 BM 154 Nail in Root of Elm Elevation 114.75
1/25 BM 155 Nail in Root of Elm Elevation 114.75
1/25 BM 156 Nail in Root of Elm Elevation 114.75
1/25 BM 157 Nail in Root of Elm Elevation 114.75
1/25 BM 158 Nail in Root of Elm Elevation 114.75
1/25 BM 159 Nail in Root of Elm Elevation 114.75
1/25 BM 160 Nail in Root of Elm Elevation 114.75
1/25 BM 161 Nail in Root of Elm Elevation 114.75
1/25 BM 162 Nail in Root of Elm Elevation 114.75
1/25 BM 163 Nail in Root of Elm Elevation 114.75
1/25 BM 164 Nail in Root of Elm Elevation 114.75
1/25 BM 165 Nail in Root of Elm Elevation 114.75
1/25 BM 166 Nail in Root of Elm Elevation 114.75
1/25 BM 167 Nail in Root of Elm Elevation 114.75
1/25 BM 168 Nail in Root of Elm Elevation 114.75
1/25 BM 169 Nail in Root of Elm Elevation 114.75
1/25 BM 170 Nail in Root of Elm Elevation 114.75
1/25 BM 171 Nail in Root of Elm Elevation 114.75
1/25 BM 172 Nail in Root of Elm Elevation 114.75
1/25 BM 173 Nail in Root of Elm Elevation 114.75
1/25 BM 174 Nail in Root of Elm Elevation 114.75
1/25 BM 175 Nail in Root of Elm Elevation 114.75
1/25 BM 176 Nail in Root of Elm Elevation 114.75
1/25 BM 177 Nail in Root of Elm Elevation 114.75
1/25 BM 178 Nail in Root of Elm Elevation 114.75
1/25 BM 179 Nail in Root of Elm Elevation 114.75
1/25 BM 180 Nail in Root of Elm Elevation 114.75
1/25 BM 181 Nail in Root of Elm Elevation 114.75
1/25 BM 182 Nail in Root of Elm Elevation 114.75
1/25 BM 183 Nail in Root of Elm Elevation 114.75
1/25 BM 184 Nail in Root of Elm Elevation 114.75
1/25 BM 185 Nail in Root of Elm Elevation 114.75
1/25 BM 186 Nail in Root of Elm Elevation 114.75
1/25 BM 187 Nail in Root of Elm Elevation 114.75
1/25 BM 188 Nail in Root of Elm Elevation 114.75
1/25 BM 189 Nail in Root of Elm Elevation 114.75
1/25 BM 190 Nail in Root of Elm Elevation 114.75
1/25 BM 191 Nail in Root of Elm Elevation 114.75
1/25 BM 192 Nail in Root of Elm Elevation 114.75
1/25 BM 193 Nail in Root of Elm Elevation 114.75
1/25 BM 194 Nail in Root of Elm Elevation 114.75
1/25 BM 195 Nail in Root of Elm Elevation 114.75
1/25 BM 196 Nail in Root of Elm Elevation 114.75
1/25 BM 197 Nail in Root of Elm Elevation 114.75
1/25 BM 198 Nail in Root of Elm Elevation 114.75
1/25 BM 199 Nail in Root of Elm Elevation 114.75
1/25 BM 200 Nail in Root of Elm Elevation 114.75

154+19.25 Alexander Rd
PC 107.75
PT 107.75
PC 116.20
PT 116.20
PC 124.20
PT 124.20
PC 132.20
PT 132.20
PC 140.20
PT 140.20
PC 148.20
PT 148.20
PC 156.20
PT 156.20
PC 164.20
PT 164.20
PC 172.20
PT 172.20
PC 180.20
PT 180.20
PC 188.20
PT 188.20
PC 196.20
PT 196.20
PC 204.20
PT 204.20
PC 212.20
PT 212.20
PC 220.20
PT 220.20
PC 228.20
PT 228.20
PC 236.20
PT 236.20
PC 244.20
PT 244.20
PC 252.20
PT 252.20
PC 260.20
PT 260.20
PC 268.20
PT 268.20
PC 276.20
PT 276.20
PC 284.20
PT 284.20
PC 292.20
PT 292.20
PC 300.20
PT 300.20
PC 308.20
PT 308.20
PC 316.20
PT 316.20
PC 324.20
PT 324.20
PC 332.20
PT 332.20
PC 340.20
PT 340.20
PC 348.20
PT 348.20
PC 356.20
PT 356.20
PC 364.20
PT 364.20
PC 372.20
PT 372.20
PC 380.20
PT 380.20
PC 388.20
PT 388.20
PC 396.20
PT 396.20
PC 404.20
PT 404.20
PC 412.20
PT 412.20
PC 420.20
PT 420.20
PC 428.20
PT 428.20
PC 436.20
PT 436.20
PC 444.20
PT 444.20
PC 452.20
PT 452.20
PC 460.20
PT 460.20
PC 468.20
PT 468.20
PC 476.20
PT 476.20
PC 484.20
PT 484.20
PC 492.20
PT 492.20
PC 500.20
PT 500.20
PC 508.20
PT 508.20
PC 516.20
PT 516.20
PC 524.20
PT 524.20
PC 532.20
PT 532.20
PC 540.20
PT 540.20
PC 548.20
PT 548.20
PC 556.20
PT 556.20
PC 564.20
PT 564.20
PC 572.20
PT 572.20
PC 580.20
PT 580.20
PC 588.20
PT 588.20
PC 596.20
PT 596.20
PC 604.20
PT 604.20
PC 612.20
PT 612.20
PC 620.20
PT 620.20
PC 628.20
PT 628.20
PC 636.20
PT 636.20
PC 644.20
PT 644.20
PC 652.20
PT 652.20
PC 660.20
PT 660.20
PC 668.20
PT 668.20
PC 676.20
PT 676.20
PC 684.20
PT 684.20
PC 692.20
PT 692.20
PC 700.20
PT 700.20
PC 708.20
PT 708.20
PC 716.20
PT 716.20
PC 724.20
PT 724.20
PC 732.20
PT 732.20
PC 740.20
PT 740.20
PC 748.20
PT 748.20
PC 756.20
PT 756.20
PC 764.20
PT 764.20
PC 772.20
PT 772.20
PC 780.20
PT 780.20
PC 788.20
PT 788.20
PC 796.20
PT 796.20
PC 804.20
PT 804.20
PC 812.20
PT 812.20
PC 820.20
PT 820.20
PC 828.20
PT 828.20
PC 836.20
PT 836.20
PC 844.20
PT 844.20
PC 852.20
PT 852.20
PC 860.20
PT 860.20
PC 868.20
PT 868.20
PC 876.20
PT 876.20
PC 884.20
PT 884.20
PC 892.20
PT 892.20
PC 900.20
PT 900.20
PC 908.20
PT 908.20
PC 916.20
PT 916.20
PC 924.20
PT 924.20
PC 932.20
PT 932.20
PC 940.20
PT 940.20
PC 948.20
PT 948.20
PC 956.20
PT 956.20
PC 964.20
PT 964.20
PC 972.20
PT 972.20
PC 980.20
PT 980.20
PC 988.20
PT 988.20
PC 996.20
PT 996.20
PC 1004.20
PT 1004.20